

Kent Cornerstone

Keeping you up to date with all the latest neighbourhood news



Welcome to our summer 2020 Cornerstone newsletter, bringing you up to date with all the latest news from our developments across the region. We know it's been a difficult few months, and we've been committed to ensuring our developments are safe, and our communities are supported during the COVID-19 crisis. Read on to find out more about how we are making things safe, helping customers and supporting the local area.

New health and safety measures in place at our developments

Our Langley Park, Shorncliffe Heights, Three Fields, Waterside at Castle Hill, Royal Parade, Halden Field, The Lees, Oakapple Place, Church View and Ridgewood Place developments have reopened their doors following a temporary closure to help prevent the spread of COVID-19. We have introduced new working guidelines for all of our sales offices and show homes to protect the health and safety of our customers and employees. These include the installation of Perspex screens and marker guides for social distancing. All visits to our development are by appointment only and show home viewings will be unaccompanied with only one family at a time able to view each home. You can find out more about our new procedures here www.taylorwimpey.co.uk/why-choose-us/staying-safe-during-covid-19/visiting-us-safely

Our sales and customer service teams have been helping customers remotely through the lockdown period, and we will continue to offer remote video appointments for anyone who would prefer not to visit us in person. We also have a host of handy tools available on our website to help our customers on their home buying journey without the need for face to face appointments. A series of virtual home tours, downloadable brochures and buyer guides can be found here

www.taylorwimpey.co.uk/why-choose-us/online-buying-journey





When community matters the most

Helping our local communities has always been important to us and even more so during the COVID-19 crisis. We have been working hard to support those in need in any way we can, including donating vital PPE to care homes across the UK and raising money for charities close to our hearts through our Isolation Challenge.

Our regional teams donated 120,000 surgical masks, 120,000 disposable aprons and 75,000 pairs of gloves to hospitals, hospices and care homes across the country to help protect the most vulnerable in our communities. We have also donated 25 laptops in partnership with our charity partner CRASH to seven different hospices around the UK, enabling elderly members of the community to stay in touch with their friends and family.

Meanwhile, our employees and partners came together during the nationwide lockdown to fundraise more than £70,000 for the NHS, Crisis and Childline through participation in our Isolation Challenge. Hundreds of colleagues from across the business committed to cycling, running, jumping and all sorts of other forms of sport, sharing their efforts on our internal social media platform.

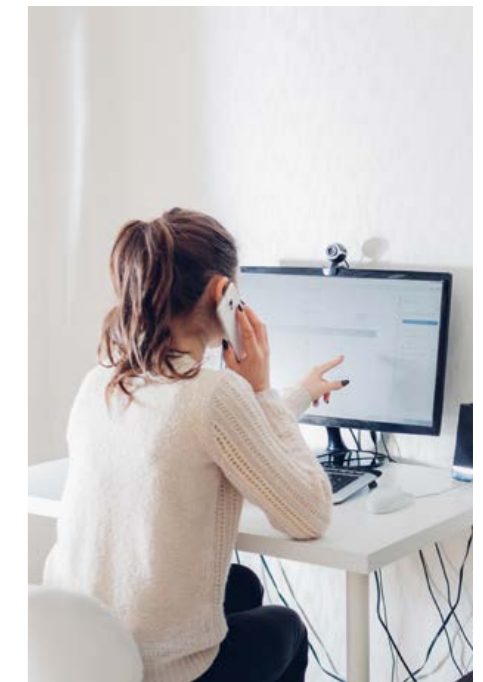
Find out more about our support of local communities here www.taylorwimpey.co.uk/why-choose-us/staying-safe-during-covid-19/community-support



Community appeal

Another way we support local communities is through donations to local charities and organisations. We have donated to a variety of causes in Kent, including local schools, nurseries, hospices and community groups.

We have launched an appeal to give back to the Kent community and are inviting local people to let us know who think needs our support. We are offering a £2,500 donation to a local charity or organisation in Kent and would love to hear from you. Let us know who you'd like to nominate by emailing kentcommunity@taylorwimpey-pr.co.uk before Friday 25th September 2020. The cause with most votes at the closing date will receive a donation. We look forward to receiving your votes.



Working from home

With a move towards home working over the last few months, we're pleased to help to meet the needs of our customers with a range of homes with flexible layouts and extra space to set up a handy home office. Our 4 bedroom Manford and the 5 bedroom Garton designs, for example, offer the perfect space for a comfortable and private room to settle down and focus.

We go above and beyond for our customers

We understand that buying a new home is a huge and important decision and we want to make the process as easy and enjoyable as possible for our customers. We're incredibly proud of how our sales teams have continued to help our customers during the pandemic and have gone above and beyond to help our customers during this challenging time.

Suzanne, our Sales Executive at Church View, helped one of our customers with their decision on the look of their new kitchen by dropping off interior samples to the customer's home in London. With no means of visiting the development themselves, Suzanne was keen to ensure the customer was able to make the right decision on their new home. She said: "The customer had expressed how the kitchen was an important part of her home and she was extremely grateful to see the designs in person. She has now moved into her new home and is a very happy member of the Church View community."



Enjoy the great outdoors in the Garden of England

Our developments in Kent tick all the boxes for people on the hunt for a new home with outdoor space on the doorstep. Many of our developments have beautiful green open space on the doorstep so you won't have to travel far to enjoy relaxing or exercising in the great outdoors.

There's a reason why Kent is known as the Garden of England and, with rolling green hills, beautiful scenery and historic settings, it is no wonder it's a popular area to settle down. With plenty of scenic walks and cycle routes to explore as well as trips to the seaside, anyone looking for a new home with a mix of rural living and everyday conveniences will find what they're looking for in Kent.



Helping you make an easy move to a new home

We have a variety of incentives available to help you to make a move to a new Taylor Wimpey home.

Both first time buyers and existing homeowners can use the current Government-backed Help to Buy: Equity Loan* scheme to secure selected homes with a deposit as low as 5% as long as they complete the purchase process by 31st March 2021. Alternatively, our Part Exchange** or easymover† schemes are available on selected plots and can help existing homeowners to move on from their current homes.

As a thank you for the incredible work of NHS and care support workers during the COVID-19 pandemic, we are offering a care worker

discount to the value of 5% of the purchase price of a new home at our developments across Kent.

Customers can also benefit from the Stamp Duty Holiday††, saving thousands of pounds on the cost of moving. Anyone buying a home below £500,000 in England will be exempt from paying Stamp Duty until 1st April 2021, giving both first and second time buyers an extra boost towards stepping onto or up the property ladder or downsizing from their current home.

Find out more the range of incentives available here. Our sales executives are on hand to discuss the offers available at each of our developments.



Find your dream home in Kent

With a variety of 2, 3, 4 and 5 bedroom houses and 2 bedroom apartments available across our Langley Park, Shorncliffe Heights, Three Fields, Waterside at Castle Hill, Royal Parade, Halden Field, The Lees, Oakapple Place and Church View developments in Kent, we have a home to suit everyone. We also have a choice of 3 and 4 bedroom homes at our Ridgewood Place development in Uckfield.

To find out more about the homes and incentives available at any of our developments, to book an appointment to visit or a video

appointment with our sales teams visit the individual development pages at www.taylorwimpey.co.uk

We're also excited to announce that the first homes at our Bridgefield development in Ashford will be launching in October. To find out more and register your interest to ensure you are kept up-to-date with the latest news, visit the development page on our website.

We hope to hear from you soon.

Get in touch

Call us or visit our website

#taylorwimpey

01732 836 000

taylorwimpey.co.uk

**Taylor
Wimpey**