

Welcome

Land off Alton Lane, Four Marks

Taylor Wimpey

Consulting the community

Taylor Wimpey is sharing its vision to develop Land off Alton Lane at Four Marks, Hampshire.

We are proposing up to 230 homes including much-needed affordable housing.

There will be a net gain in biodiversity of at least 10%, sustainable drainage, and promotion of green travel which will include cycle storage and electric vehicle charging points.

There will also be a children's play area along with space for informal recreation.

Our team has a proven track record, with sustainability and high-quality at the forefront of our projects.

As one of the UK's leading housebuilders, we bring extensive experience in delivering well-designed new communities, local investment, and a range of homes to meet different needs.

Before seeking outline planning permission, we want to engage with residents and other interested parties. As a result, we are holding this consultation, and would welcome your feedback.



Delivering homes local people need

Up to 230 high-quality new homes, including 40% affordable housing



A greener, more sustainable place to live

At least 10% biodiversity net gain, new landscaping and greener travel

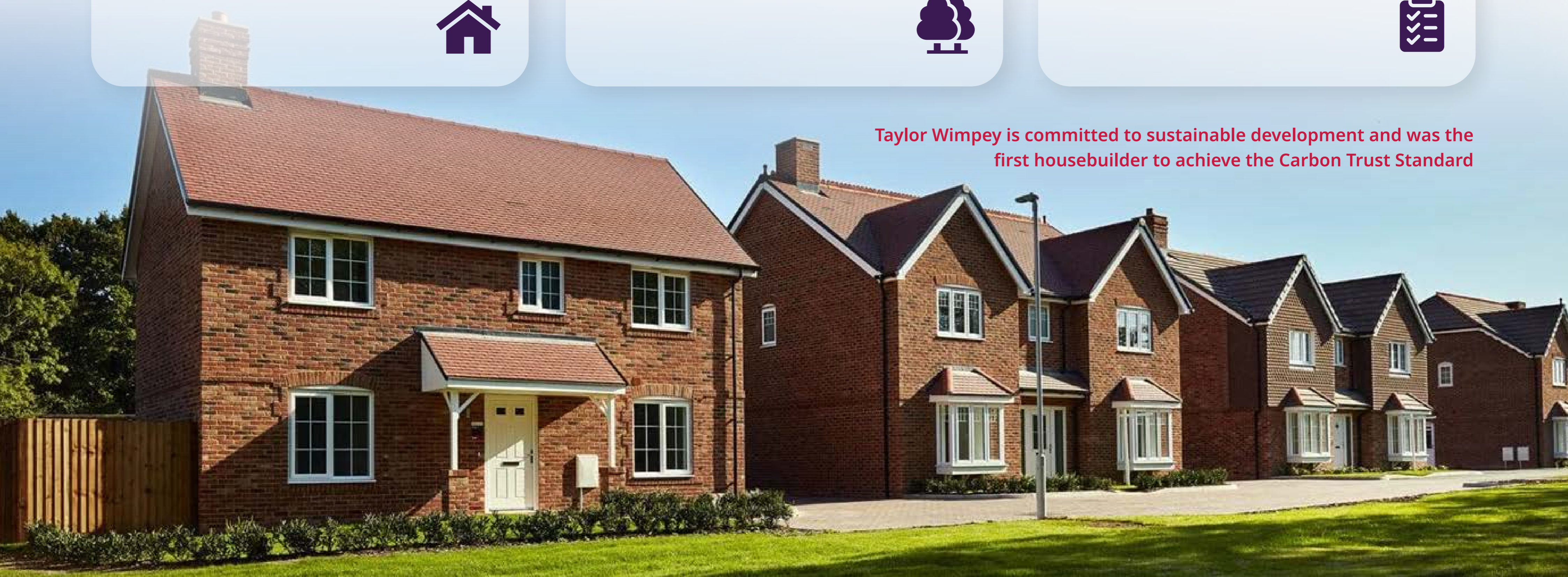


A well-planned site ready for delivery

A sustainable scheme on land highly suitable for development



Taylor Wimpey is committed to sustainable development and was the first housebuilder to achieve the Carbon Trust Standard



About us

Land off Alton Lane, Four Marks

Taylor Wimpey

About Taylor Wimpey

Taylor Wimpey is part of the group that was formed by the merger of George Wimpey and Taylor Woodrow in 2007.

We are able to draw upon valuable experience with a history dating back to the 19th Century. Today we are one of the UK's largest housebuilders, completing more than 10,000 homes annually.

At Taylor Wimpey we have a clear purpose, to deliver great homes and create thriving communities. We want our developments to be environmentally, socially, and economically sustainable.

We understand the importance of stimulating strong, vibrant, and healthy communities while protecting and improving the natural, built, and historic environment.

Our homes are designed to be zero carbon ready, and in line with the UK's Building Regulations, every dwelling is supplied with access to an electric vehicle charging point if required.

We became the first housebuilder to achieve the Carbon Trust Standard for our overall approach to carbon management, including our policy, strategy, and verification of our data and processes.

We're also proud to have retained our 5-star award for customer satisfaction by the Home Builders' Federation. This means 9 out of 10 customers would recommend us to a friend.



We contributed £359m last year

towards improving communities, transport and infrastructure



We encourage our teams to volunteer

in support of suitable causes from the communities we work in



We've cut our carbon footprint by 51%

and we will reach net zero emissions by 2045

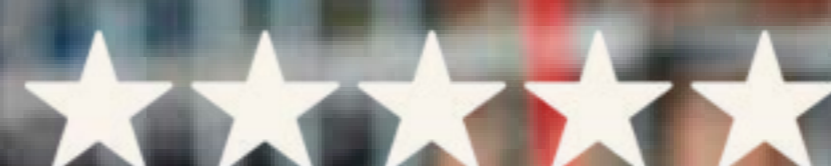


We integrate affordable homes on our sites

helping more people across the UK to find a place to call home



HBF Home Builders Federation



Customer Satisfaction 2026

Our vision

Land off Alton Lane, Four Marks

Taylor Wimpey

Delivering much-needed affordable housing

Our team recognises that the East Hampshire District has an urgent need for more affordable housing.

With our proposed scheme at Four Marks, we will deliver up to 230 dwellings including 40% affordable housing.

We will also provide a host of other significant benefits including payments towards local infrastructure and a biodiversity net gain of at least 10%.

Our sustainable plans also feature extensive landscaping works, informal recreation space, a children's play area, and sustainable drainage systems.

We will also promote greener travel by delivering cycle storage and electric vehicle charging points.

Overall, we aim to create a community that is attractive, sustainable, green, and provides much-needed affordable housing for local families in a sustainable location.



Our proposals at a glance



- Up to 230 homes including 40% affordable housing



- Contributions to improving local infrastructure



- A children's play area, informal recreation space, and new footpaths



- Using energy efficient construction methods and materials



- Electric vehicle charging points



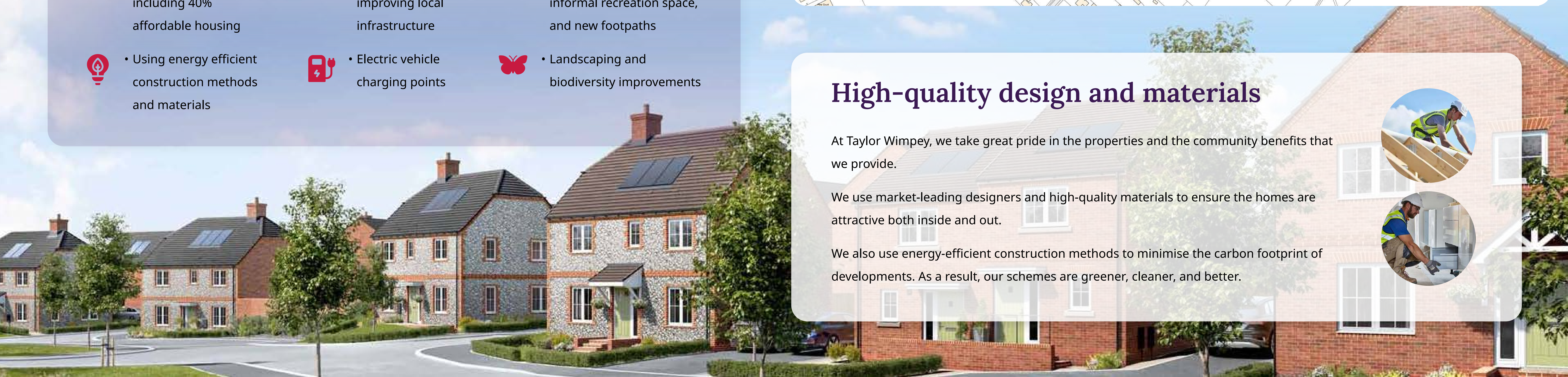
- Landscaping and biodiversity improvements

High-quality design and materials

At Taylor Wimpey, we take great pride in the properties and the community benefits that we provide.

We use market-leading designers and high-quality materials to ensure the homes are attractive both inside and out.

We also use energy-efficient construction methods to minimise the carbon footprint of developments. As a result, our schemes are greener, cleaner, and better.



Site layout

Land off Alton Lane, Four Marks

Taylor Wimpey

Central green space with play spaces, swales (attenuation) sustainable drainage and ecologically diverse planting



Play space at central focal point. Framed by corner turning houses and located along the central green public space

New houses are offset from existing properties to maintain privacy and security. Existing trees and hedges along the northern boundary are protected



Illustrative areas for attenuation with houses fronting onto this with an attractive view

Double fronted units on corners to maximise the street frontage

Development parcels have secure edges and back to back distances to promote safety and security

Green corridors through development creating a green 'lung' at the core

Private driveways and shared surfaces to soften the transition at the edges of the development



Existing trees and hedgerows are maintained and buffers put in place to these to bring them into the development as features

Illustrative walking trails with the potential to link into the wider network to promote Active Travel



Trees and planting incorporated into the streets to create an attractive place to be



Secondary access for emergency vehicles, pedestrians and cyclists only

Play located throughout the development and along key paths to create interest



Illustrative primary route through the development with a new access via a updated road alignment off Alton Lane



Central pocket green space to create a focal point in the street



KEY:

- 13.1ha Site Boundary
- Illustrative attenuation feature
- Illustrative play along the way and play space (LEAP)
- Key development frontages
- Primary street
- Illustrative walking routes
- Illustrative proposed tree
- Existing trees and hedgerows
- Ecology buffer between development and existing trees and hedgerows

Environment and Sustainability

Land off Alton Lane, Four Marks

Taylor Wimpey

Our green vision

The proposals at Four Marks will lead to a significant amount of public open space being created.

Additionally, a biodiversity net gain of at least 10% will be delivered. We will also plant greenery, retain mature trees and hedgerows where possible, and deliver sustainable drainage systems.

Our vision also includes footpaths to improve connectivity and promote health and wellbeing along with greener travel.

Other sustainable features include cycle storage along with electric vehicle charging points. Parking will also be provided to prevent overspill into neighbouring areas, while vehicular access will come from the eastern end of the proposal site via Alton Lane.

Coupled with our environmental and landscaping improvements, we will deliver a scheme that is attractive, pleasant, green, and sustainable.

Our environmental credentials

- Significant landscaping improvements
- Delivering a biodiversity net gain of at least 10%
- A children's play area and informal recreation space
- Promoting greener travel with secure cycle storage, and EV charging points
- New footpaths to improve connectivity and promote health and wellbeing
- Greenery planting and retaining mature trees and hedgerows where possible



Our scheme includes significant landscaping improvements and a biodiversity net gain of at least 10% - LEAP stands for Local Equipped Area for Play



Sustainable drainage

Environment Agency mapping shows the proposal site lies within Flood Risk Zone 1, which is the land deemed at least risk of flooding. The forthcoming outline planning application will include a robust Flood Risk Assessment.

This will demonstrate that once construction is complete, the potential flood risk at the site and nearby areas will not increase. We will also comply with existing national and local standards relating to minimising flood risk. Our proposals will also demonstrate how Sustainable Drainage Systems will be delivered.



Transport

Land off Alton Lane, Four Marks

Taylor Wimpey

Transport and Access

The main vehicle access to the site is proposed from Alton Lane. The proposals are being designed to provide safe and suitable access to the site, while encouraging walking, cycling and other sustainable ways to travel.

A detailed Transport Assessment will be prepared as part of the forthcoming outline planning application.

This will consider the local road network, traffic movements, walking and cycling routes, public transport access, road safety and opportunities for improvements.

Emergency Access

A secondary access from Alton Lane is proposed for pedestrians and cyclists, and could also be used by emergency vehicles if needed.



Walking and cycling connections

The scheme will look to provide a network of walking and cycling routes through the site and to nearby streets and facilities.

This includes potential connections to:

- Alton Lane
- neighbouring development land
- existing public rights of way
- local facilities in Four Marks

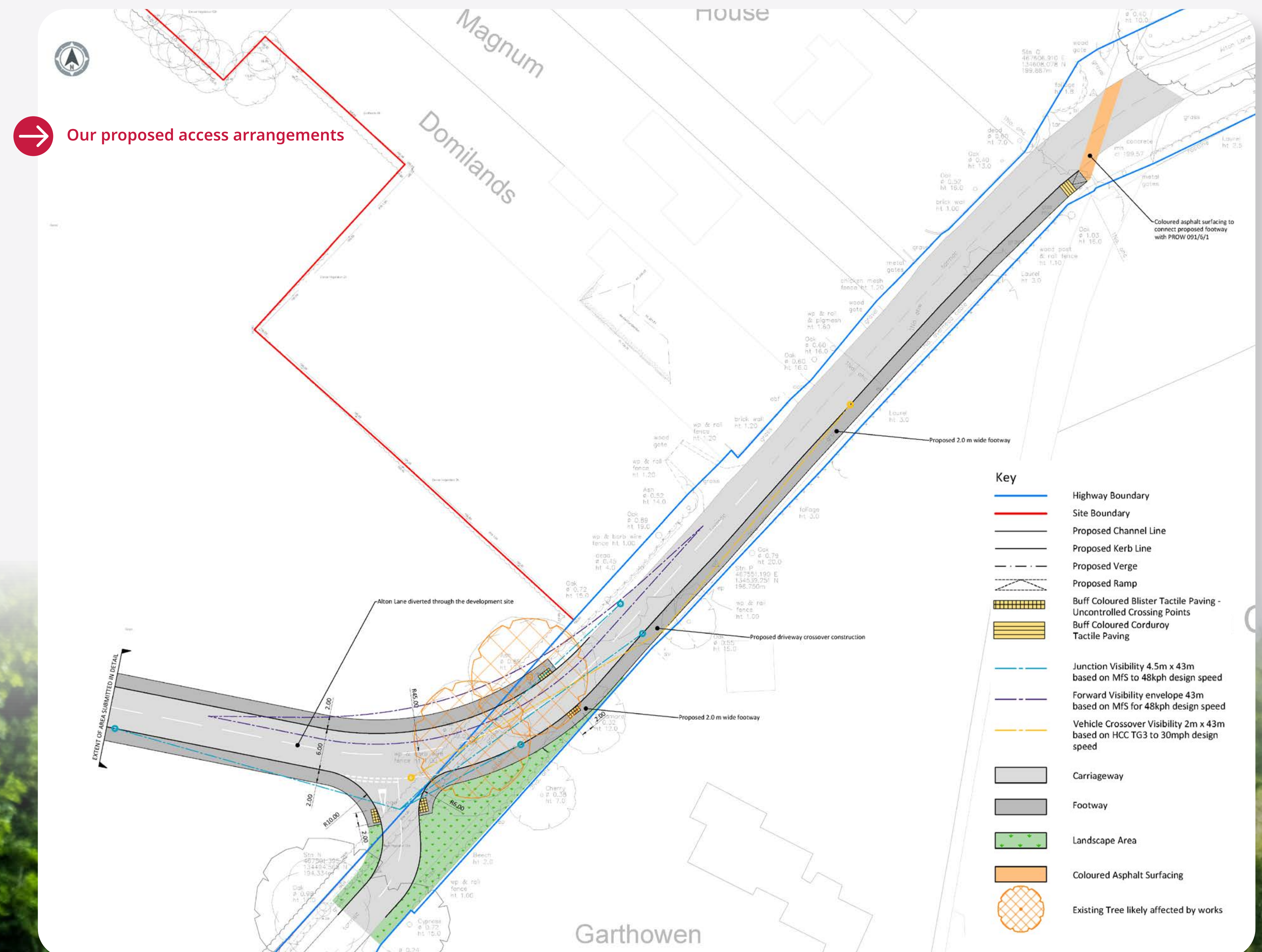
These links would help make the site more connected and give residents more choice in how they travel.



Local Facilities & Sustainable Travel

Four Marks has a range of local facilities, including shops, a primary school, village hall, sports facilities, medical services and bus stops on the A31.

The Transport Assessment will look at how future residents could access these facilities safely and conveniently by walking, cycling and public transport.



Key benefits

Taylor Wimpey

Land off Alton Lane, Four Marks

Our proposals at a glance



Up to 230 new homes



New planting, retained trees and hedgerows wherever possible



40% affordable homes



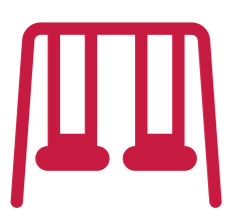
Sustainable drainage, including infiltration basins



Significant areas of publicly accessible open space



A sustainable location within reach of local shops, services, schools and public transport



A new play area with additional informal play opportunities throughout the site



New pedestrian and cycle connections, including access from Alton Lane



Delivering at least 10% biodiversity net gain



Investment in local infrastructure via Community Infrastructure Levy payments



Next steps

Land off Alton Lane, Four Marks

Taylor Wimpey

Next steps

Thank you for viewing our proposals regarding sustainable residential development at Land off Alton Lane, Four Marks.

Once this consultation closes, our project team will go through the feedback received from residents and other interested parties and take this into consideration before refining our plans and submitting our planning application to East Hampshire District Council.

If you provide us with your details, you will be kept up to date on our progress as the proposals for the site move forward.

Thank you for your time.

For those without internet access

If you have requested to receive these consultation materials by post in paper format, please return your comments on the feedback form provided and by using the enclosed freepost envelope, or address your comments to **Freepost, Fairthorn Consultancy.**

No stamp is required.



Your feedback

Our team believes the views of residents and other interested parties are important. Please submit your comments via one of the options below, by **Sunday 21st June 2026.**



Complete the feedback form on our website, taylorwimpey.co.uk/land-off-alton-lane



Email us at mail@your-feedback.co.uk



Call **0800 099 6712**, leave a message, and our project team will ring you back