

Taylor Wimpey Uk  
Site HSE Manual

Section 9  
Environmental and Waste Management

Document Owner

Craig Schwarze	Head Of HSE
----------------	-------------

## Table of contents

9.1 ENVIRONMENTAL & WASTE MANAGEMENT CONTROLS .....	4
9.2.1 SITE SPECIFIC ENVIRONMENTAL ACTION PLAN (SSEAP) .....	4
9.2.2 SITE WASTE MANAGEMENT PLAN .....	5
9.2.3 SITE WASTE MANAGEMENT MATRIX.....	6
9.3.1 MONITORING ENVIRONMENTAL ASPECTS OF THE SITE .....	7
9.3.2 REPORTING ENVIRONMENTAL INCIDENTS.....	7
9.3.3 ENVIRONMENTAL INCIDENT CATEGORIES .....	8
9.3.4 SPILL RESPONSE (e.g. FUELS) .....	8
9.4.1 EFFICIENT USE OF MATERIALS.....	9
9.4.2 SITE ARISING (e.g. Excavated Spoil - re-use on site or transferred).....	9
9.4.3 TOPSOIL TESTING.....	11
9.4.4 TOPSOIL / STOCKPILE MANAGEMENT / STORAGE.....	11
9.5.1 SILT MANAGEMENT .....	12
9.5.2 SILT RUN OFF PREVENTION MEASURES.....	13
9.5.3 'NON-ACTIVE' ZONES OF THE SITE .....	14
9.5.4 GENERAL.....	14
9.5.5 ROAD SWEEPERS.....	15
9.5.6 EXCAVATIONS AND DEWATERING .....	15
9.5.7 CONDITIONS ATTACHED TO ENVIRONMENTAL PERMITS OR DISCHARGE CONTENT .....	16
9.5.8 SETTLEMENT TANKS and FLOCCULANTS.....	17
9.5.9 SEWAGE PUMPING STATIONS.....	18
9.5.10 PERMEABLE PAVING.....	18
9.5.11 SITES AT RISK OF FLOODING.....	19
9.6 Contaminated Land.....	19
9.6.1 GROUND REMEDIATION .....	20
9.6.2 GAS MEMBRANES .....	20
9.7 waste Management .....	21
9.7.1 WASTE CLASSIFICATION .....	21
9.7.2 DEALING WITH HAZARDOUS WASTE .....	22
9.7.3 REMOVAL OF HAZARDOUS WASTE FROM SITE .....	22
9.7.4 STORAGE OF HAZARDOUS SUBSTANCES .....	22
9.7.5 CEMENT, CONCRETE and GROUT .....	23
9.7.6 GENERAL WASTE CONTAINERS (Non-hazardous).....	24
9.7.7 WASTE SEGREGATION AREA / SIGNAGE PACKS .....	24
9.7.8 DOCUMENTATION FOR TRANSFER and WASTE DISPOSAL.....	25
9.8 PLOT SURPLUS MATERIAL (REDUCING WASTE).....	25

9.9.1 SITE MANAGERS RESPONSIBILITIES .....	26
9.9.2 PROTECTED TREES and HEDGEROWS .....	27
9.9.3 INVASIVE WEEDS.....	27
9.9.4 PROTECTED SPECIES .....	28
9.9.5 BIODIVERSITY NET GAIN (BNG) .....	29
9.10.2 ENVIRONMENTAL IMPACTS – NOISE.....	30
9.10.3 ENVIRONMENTAL IMPACTS – DUST.....	30
9.10.4 ENVIRONMENTAL IMPACTS – VIBRATIONS.....	31
9.10.5 ENVIRONMENTAL IMPACTS – EMISSIONS.....	31
9.10.6 OTHER POTENTIAL STATUTORY NUISANCES.....	31

## 9.1 ENVIRONMENTAL & WASTE MANAGEMENT CONTROLS

Throughout this Section, you will find details of our environmental controls, to reduce impact on the environment.

These controls will allow us to, reduce emissions and waste, conserve precious resources and regenerate the natural environment wherever possible on developments.

An understanding of what approaches can be taken during site delivery, to enhance sites and the surrounding environment, is critical in meeting and surpassing our Environmental controls.

Environmental and Waste Management Controls



Safety and environmental protection are critical in the construction industry to prevent accidents, protect workers, and minimize ecological impact. Key safety measures include risk assessments, use of personal protective equipment (PPE), proper training, and compliance with regulations. Environmentally, construction must manage waste, control emissions, prevent pollution, and conserve resources through sustainable practices. Implementing green building methods, recycling materials, and monitoring air and water quality reduce harm to ecosystems. Together, these practices promote a safer, more sustainable, and responsible construction environment.



Health elements in the environmental aspects of the construction industry focus on protecting workers and surrounding communities from hazards. Key issues include exposure to dust, noise, vibration, and hazardous substances such as asbestos or chemicals. Managing waste, ensuring clean air and water, and using non-toxic materials promote healthier worksites. Encouraging hygiene facilities, mental health support, and sustainable site practices further enhance overall well-being and contribute to a safe, healthy construction environment.



The environmental aspects of the construction industry involve managing activities that impact the natural environment. These include resource consumption, waste generation, air and water pollution, noise, and land disturbance. Sustainable construction practices aim to minimize these effects through energy efficiency, waste reduction, recycling, and responsible sourcing of materials. Implementing environmental management systems, protecting biodiversity, and reducing carbon emissions are key goals. By integrating eco-friendly designs and technologies, the industry can reduce its ecological footprint and promote long-term environmental sustainability in building and infrastructure projects.

### 9.2.1 SITE SPECIFIC ENVIRONMENTAL ACTION PLAN (SSEAP)

A **Site-Specific Environmental Action Plan (SSEAP)** assists the awareness and control of any potential environmental impact of TW's activities on site. A copy of the SSEAP must be held as part of the **Construction HSE Plan (Folder 1, F1.5)**. A SSEAP is available on all sites and used by Site Management Team to review and monitor the environmental management controls required throughout the construction process.

The **SSEAP**:

- identifies the site's **Sensitive Receptors** (e.g. watercourses, protected species, TPOs etc.);
- identifies relevant **Environmental Risk Activities** (e.g. demolition, storage of hazardous materials etc.);
- identifies on-site **Environmental Risk Materials** (e.g. existing contamination, fuel, etc.); and
- outlines the **Possible Impacts** from the activities and materials above (e.g. refuelling could result in contamination of the ground);
- details the **Controls** to be adopted to manage the environmental aspects of the site;
- and highlights the **Responsibilities** for actions, e.g. Site Contractor or operative.

The Site Manager must discuss the **SSEAP** with their Site Management Team, Contractors and Operatives prior to works commencing on any activity with an Environmental risk and clarify the appropriate action to be taken and by whom (particularly the groundworkers).

All SSEAP reports are generated from TW’s Land and Environment Assessment of Development Risk (LEADR) management system.

The key SSEAP reports that can be referred to when briefing contractors / operatives on site are:

**SSEAP - Site Information:**

This document details the nature of the site and key information such as site access and boundaries, planning and licence information, e.g. working hours, etc.

**SSEAP - Site Information**  
Site ref. 22219 - Hadham Road Phase & Bishop Stortford  
10-12 -2021 14:05:00

**Taylor Wimpey**

Site Reference	22219	Grid Coordinates X	547277
Site Name	Hadham Road Phase 2, Bishops Stortford	Grid Coordinates Y	221657
Veridior	HCC	Business Unit	TW Head Office
Development Name	Hadham Road Phase 2	Site Status	Active
Address Line 1	Land To The South Of Hadham Road		
Address Line 2	Bishops Stortford		
Post Code	CM23 2PU		

Total Risk 97% Total Progress 0%

3 3 3

**Significant Items Report:**

This is a summary of the:

- Significant Receptors e.g. adjacent residential properties.
- Activities and their Potential Impact
- e.g. generation of dust, noise from piling etc.; and
- Environmental Risk Materials
- e.g. fuel.

Items identified and listed in this report require control measures on site and must be closely monitored and controlled

**9.2.2 SITE WASTE MANAGEMENT PLAN**



Environmental documentation on a construction site is vital for demonstrating compliance with legal and regulatory requirements. It records how environmental risks are managed, including waste disposal, pollution control, and resource use. Accurate documentation supports accountability, enables effective monitoring, and provides evidence during audits or inspections. It helps identify trends, prevent incidents, and improve sustainability practices. Maintaining thorough environmental records ensures transparency, promotes responsible site management, and protects both the environment and the company from potential legal, financial, and reputational consequences.

The Commercial Team provides a copy of the **Site Waste Management Plan (SWMP)** for your site before any works commence. They develop and maintain the SWMP through the progress of the site.

The SWMP details the waste streams that are produced on site, the estimated quantities of waste that are expected to be produced and how they are managed (i.e. reused, recycled, disposed of offsite etc.).

To maintain the SWMP, the Site Manager:

- records all inert material used on site, e.g. under roads, etc. using the [Inert Materials Usage Record Sheet, Construction HSE Plan - Folder 2, F2.25](#);
  - collects the waste transfer notes received from all waste carriers including British Gypsum; and
- assists the Commercial Team in the quarterly review of the SWMP.



**F2.25 Inert Materials Usage Record Sheet**

Please use this sheet to record the volumes and types of inert material reused on site

### 9.2.3 SITE WASTE MANAGEMENT MATRIX

A **Site Waste Management Matrix (Construction HSE Plan – Folder 3, F3.9)** must be provided at site start by the Commercial Team. It lists all approved waste carriers for your site, their respective licence numbers, and what types of waste they are permitted to take from your site. All waste streams are listed. **You must not permit any materials to be removed from site if any of the information is unavailable or is inconsistent with the Site Waste Management Matrix.**

**Note:** Road Sweeping Contractors must be included – they must appear in Section 1 if appointed by the Groundworks Contractor.

- They must not be permitted to empty loads on site.
- The Sweeping Contractor must provide waste transfer notes.

Contact your Production Director if:

- You have not been provided with the Waste Management Matrix;
- if any material to be removed from the site is not included on the matrix; or
- if details of carriers or receiving sites shown on Duty of Care documents differ from the information contained on the matrix.

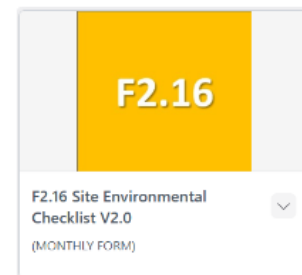
M2d Waste Matrix		Report reference 7381287 / 28-10-25 11:34am								
Group Taylor Wimpey UK Ltd	Division Taylor Wimpey West Scotland Ltd	Reference 0140026 to 2414204								
This report summarises waste movements between two dates. For help & more reports please login at www.reconomy.com										
Development	Waste stream	SNVT	Supplier	Contract Ref	Contract expiry	Disposal site	Address	Site type	WHL	Date SAPR checked
21710 - Derriall Farm Phase 3	Light Mixed Compaction	17 09 01	Hamilton Waste & Recycling Ltd	SEA0374629	24th January 2026	KPT066 - Smeaton Recycling Centre	Caithness, Musselburgh, Edinburgh, EH21 9PZ, United Kingdom	Recycling facility	WHLU1102947	
21710 - Derriall Farm Phase 3	Hardboard	17 09 02	Hamilton Waste & Recycling Ltd	SEA0374629	24th January 2026	KPT066 - Smeaton Recycling Centre	Caithness, Musselburgh, Edinburgh, EH21 9PZ, United Kingdom	Recycling facility	WHLU1102947	
21710 - Derriall Farm Phase 3	Wood	17 02 01	Hamilton Waste & Recycling Ltd	SEA0374629	24th January 2026	KPT066 - Smeaton Recycling Centre	Caithness, Musselburgh, Edinburgh, EH21 9PZ, United Kingdom	Recycling facility	WHLU1102947	
Sub total:										
Sub total:										
M2d total:										
<small>Duty of Care verification has been completed in accordance with Reconomy ISO14001 certified Assurance of Compliance procedures            Reconomy (UK) Ltd, Kettlewell House, Stafford Park 1, Telford, TF3 3BD - 0800442027</small>										

### 9.3.1 MONITORING ENVIRONMENTAL ASPECTS OF THE SITE

[Site Environmental Checklist \(Construction HSE Plan - Folder 2, F2.16\)](#), for use by the Site Management Team, is intended as a regular review of the **Site-Specific Environmental Action Plan (SSEAP)** and a check that adequate control measures are in place and being maintained.

The review period is set to reflect the sensitivity of the site; however, a **monthly review must be carried out as a minimum**

**Note:** If the site is noted as of high sensitivity (e.g. due to protected species or complex remediation requirements, etc.), you may need to increase the frequency of the review. This must be agreed with the Production Director/Manager at site start. If you require further assistance, contact your Production Manager.



### 9.3.2 REPORTING ENVIRONMENTAL INCIDENTS

All environmental incidents on site (or within the scope of the overall works) must be reported via the **Environmental Advice / Incident Line**. The Advice Line can also be used to obtain general advice to prevent any incidents from occurring. If you are uncertain of how to proceed on any environmental matter, call the advice line. **0845 003 8752**

The incident line is manned day and night by our environmental advisors (RSK). They provide advice on **immediate response, and information to manage the incident over the phone**. An environmental advisor may need to visit the site to evaluate the situation, provide further guidance on managing the response to an incident, and support and advise the Site Management Team or BU, especially during dealings with any Environmental Regulator.

#### TW Environmental Advice & Incident Line

- Available to provide expert advice on environmental concerns.
- Helps ensure prompt response to reduce environmental impact.
- Supports compliance with environmental regulations.
- Encourages reporting to protect natural resources.

### 9.3.3 ENVIRONMENTAL INCIDENT CATEGORIES



Monitoring and addressing environmental incidents on construction sites is essential to protect ecosystems, public health, and regulatory compliance. Prompt detection and management of spills, pollution, or waste prevent contamination of soil, air, and water. Effective monitoring reduces long-term remediation costs and safeguards the company’s reputation. Implementing control measures, training staff, and maintaining incident response plans ensure quick, responsible action. Continuous oversight promotes sustainable construction practices, minimizes environmental harm, and demonstrates commitment to environmental stewardship and legal obligations within the construction industry.

**It is of the utmost importance that you report all environmental incidents that occur both on site and within our scope of works.**

Some examples of incidents that must be reported are:

- reporting of silt management issues on site or silt run-off from site;
- reporting of burning on site;
- complaints from site neighbours due to statutory nuisance, e.g. dust, noise etc;
- discovery of unexpected contamination, including asbestos within the soils;
- issues associated with waste disposal arrangements, e.g. difference between waste matrix and waste transfer note on site;
- reporting of a spill of oil from a generator or from a vehicle etc.; and
- involvement of the Environmental Agency or Environmental Health Department, etc.

Definitions	
MAJOR	Obvious immediate risk to receptors / regulatory involvement – specialist advice required
MEDIUM	No immediate threat to receptors – specialist advice required
MINOR	Dealt with by site
ADVICE	Advice only

### 9.3.4 SPILL RESPONSE (e.g. FUELS)

In order to minimise the risk of contaminating surface or groundwater, **all spillages on site must be responded to immediately and reported to the [TW Environmental Advice / Incident Line](#).**

If a spillage has occurred:

- **assess the hazard** and, if necessary, evacuate all personnel not directly involved in dealing with the spillage (e.g. where mass volumes of fuel have spilled / tank rupture);
- **take action to contain the spillage**, taking into account any dangers associated with the spill;
- **take action to prevent further spillage**, if safe to do so;
- **once contained, contact the [TW Environmental Advice / Incident Line](#) for further advice on action to be taken or further advice needed;**
- in some cases the environmental regulator, e.g. the Environment Agency, must be informed. Guidance on this is provided by the Environmental Advice / Incident Line.

**Spill kits must be available on site and are located at refuelling areas / points.**

Spill Kits consist of;

- Oil absorbing Sheets.
- Absorbent Booms.
- Absorbent Granules.

(see [Section 2.5.5 Provision and Use of Spill Kits](#) for a detailed description of spill kit contents.)

Contaminated materials be;

- Bagged appropriately.
- Labelled as Hazardous Waste.
- Segregated away from other Waste Streams.
- Segregated away from any sensitive receptors (e.g. watercourses).
- **Collected by a licensed hazardous waste carrier.**  
(Reconomy Solutions can advise)



## 9.4.1 EFFICIENT USE OF MATERIALS

### Storage

Poor or inadequate material storage contributes significantly to waste generation on site. When storing material always remember:

- Provide adequate storage that is weatherproof and secure, such as a lean-to. Ensure materials such as timber, bricks, etc are stored off the ground; and
- Protect lightweight materials from wind.



### Good practice

- Use only the quantity of materials necessary and avoid wastage of materials.
- Ensure that only enough material is ordered or taken to your place of work from storage to complete the job in hand.
- Encourage operatives to use off-cuts and where possible incorporate into the next phase of the works (e.g. next plot).
- Reuse surplus materials where possible.
- Make arrangements with suppliers to take back surplus materials and packaging or pallets to reduce waste sent to landfill.



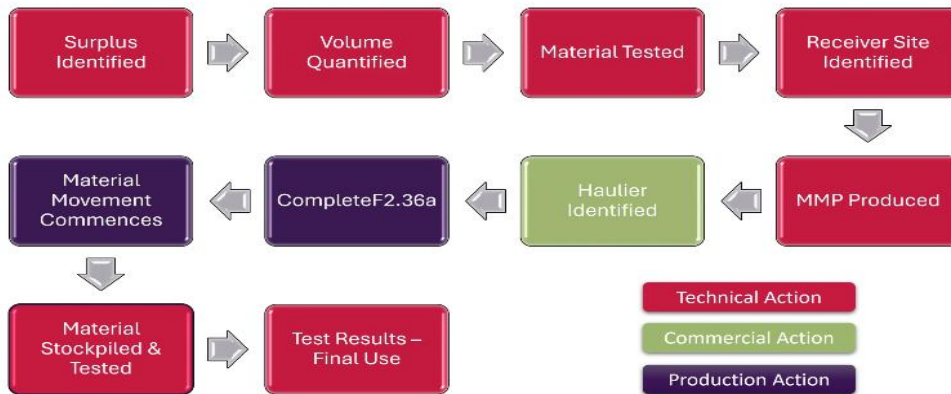
## 9.4.2 SITE ARISING (e.g. Excavated Spoil - re-use on site or transferred)

The Land and Planning or Commercial department are responsible for confirming whether site-excavated soils are to be reused on the site, on another TW site or elsewhere and whether they are classified as waste or a product, or whether there is a requirement to import soils. **Without this confirmation, you must not commence with the import, off-site re-use or disposal of site excavated materials. If there is any doubt, contact your Production Manager or RSK.**

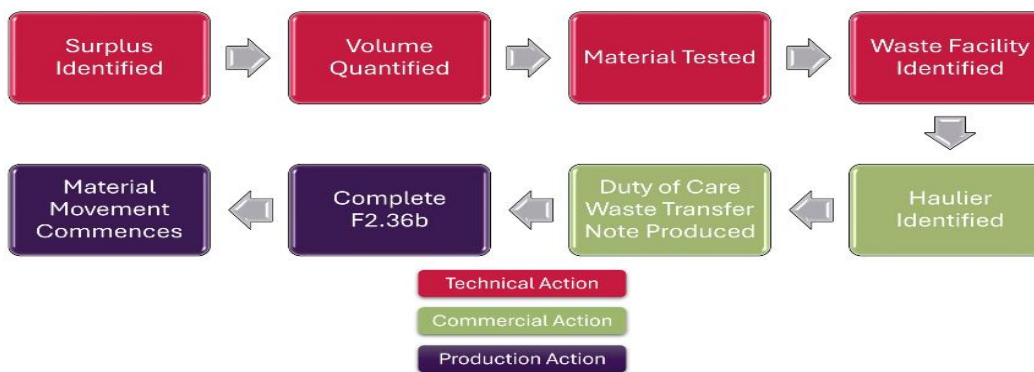
If there is a need to remove from, or import soil to, your site. **RSK or the relevant appointed environmental consultant must be contacted to discuss and arrange an appropriate mechanism for the soils to be moved, prior to any transfers:**

- The relevant Material Management Plan (MMP) approved via CL:AiRE DoWCoP is in place or exemption e.g. U1 (Environment Agency);
- The correct licenses / soil transfer documentation is in place;
- The Contractors transfer documentation is suitable and sufficient; and
- The Site Management Team is fully aware of the controls to be in place and monitored / managed during the soil transfer ([F2.36 \(a/b\) ATP – Material movement](#)) completed by Site Management.

**Process for Reuse**



**Process for Waste**



Where your site arisings have been designated for re-use under an MMP or an exemption this is developed by the Technical Department/ appointed environmental consultant. Where appropriate i.e. soil transfer, you must be given a copy of the MMP by the Technical Department and must follow the steps within it. If you have any queries, contact your Technical Department or RSK.

Any remediation works involving specialist techniques (including use of a crusher) are required to operate under a Mobile Treatment Permit (England and Wales) / Mobile Plant Licence (Scotland), or a Local Authority Mobile Crusher License. No work is permitted on site without confirming with the Commercial, Production or Technical Departments that the permit / licence and associated paperwork is in place for the specific activity. If there is any doubt, contact your Commercial / Production Manager.

If you are unsure, discuss site arisings with your Production Manager / Production Director / Technical Department.

### 9.4.3 TOPSOIL TESTING

TW has a standard policy for the testing of topsoil on all sites, especially when imported, these will also form part of any MMP import verification and will likely also have associated conditions to be met by the Local Authority and NHBC. Details must have been provided to you at the Pre-Start meeting. If details have not been passed to you, contact the Technical team for guidance.

To enable soil arisings to be appropriately classified, soil analysis may need to be carried out. Contact your Technical Department who must either have these details already or will arrange this on your behalf prior to disposal.

Record results of testing on the topsoil record sheet for each plot on the [Topsoil Record Sheet \(F2.17\)](#), noting the following:

- The plot number;
- The target completion date for that plot;
- The date the topsoil sample is required, which must be at least 3 weeks prior to completion; and
- The date when the sample was taken.

Results must be logged in - [F2.17](#)



#### Imported soils

Copies of Certificates of Quality for all imported soils must be kept on site. These are filed in the [F2.17](#). Contact your Production Manager if copies have not been forwarded to site.

A Materials Management Plan (MMP) must be in place for topsoil imports from another TW site and you must have been provided with a copy of the MMP. Contact your Technical Department if you have any queries.

### 9.4.4 TOPSOIL / STOCKPILE MANAGEMENT / STORAGE

Materials must be managed and stored on site to prevent silt run-off, and nuisance dust. The following measures must be employed:

- Minimise excessive stockpiling – phase works and where possible have just-in-time soil deliveries;
- Locate soil stockpiles away from watercourses, walkways, ditches and drains and on level ground;
- Contaminated materials must be stockpiled on an impermeable surface e.g. on tarmac in a bunded area at least 10m from a watercourse/drain;
- Cover stockpiles of contaminated material to prevent run off. Any contaminated run-off must be collected, and disposal arranged via your waste broker;
- Cover/damp down stockpiles in warm weather to prevent nuisance dust; and
- Stockpile height to be less than the height of the site boundary to reduce exposure to wind, etc.
- When stored for longer than 12 months, stockpiles will become a waste unless specifically agreed with the Environment Agency.

Contact your Technical Department if you have any queries.

### 9.5.1 SILT MANAGEMENT



Surface Water Management Plans - These should be produced as early as possible and before construction commences.

Technical teams should liaise with RSK to produce and site management teams should familiarise

themselves and keep copies on site.

Toolbox talks should be delivered to contractors, groundworkers etc and reiterated that all Taylor Wimpey procedures and working practices should be adhered to.

Surface Water Management Plans will be requested for review by the Regulatory Bodies in the event of an incident or inspection.

Silt can be a problem on sites, particularly in adverse weather conditions such as heavy rainfall which causes it to be mobilised and enter drains, watercourses or to pool on site, development roads, public highways, etc. This is made worse at times of the year when the ground is already saturated and items, such as leaf litter blocking drains or watercourses, e.g. in the autumn months.

This section outlines measures that must be considered, dependent on the circumstances / conditions of the site and particularly where significant silt run-off / discharge could potentially be an issue and where there are sensitive receptors nearby such as, watercourses.

Silt is a pollutant and can kill fish, cause flooding, block drains, etc. Sites must be managed to minimise the risk of silt pollution by following the prepared SWMP.

Consider:



#### Site Topography / Drainage plan:

- Are there any watercourses within or close to the site, where are they located?
- Are there existing drainage systems installed at site and do you know where they discharge to?
- Do you have a detailed drainage plan, and do you know where site surface water discharges to?
- Do you have knowledge of the measure's other consortium or joint venture partners are taking?

Could these impact on the management of your site?

#### on and off-site receptors: (potentially sensitive to silt run-off and transfer of mud)

- On / Off-site watercourses, drainage ditches;
- Access roads, public highways, customer driveways;
- Public Right of Ways; and
- Sensitive adjacent land uses, e.g. existing residential, fish farm, nature reserve.

#### control of the works consider:

- The impact of enabling works, especially installation of site drainage; and
- The impact of soil stripping, muck shifting, etc

### 9.5.2 SILT RUN OFF PREVENTION MEASURES

The following silt run-off prevention measures must be considered and implemented where necessary on all active areas of the site to protect sensitive receptors. These are already set out in the **Site-Specific Environmental Action Plan (SSEAP)**. However, changing site conditions necessitate regular reviews of the adequacy of agreed silt management measures.

#### Initial Phase of enabling / preparatory earthworks

- Provision of a road sweeper on site and adjacent road network during periods of inclement weather (to be continually assessed by Site Management).
- Minimise the stripping of topsoil on site to areas only required for the implementation of drainage and earthworks on a phased basis as the development progresses.
- Retention of vegetation in areas not identified for construction until a later phase.
- Consider re-seeding of areas that have been subject to topsoil stripping as part of any enabling works, but they will be left exposed for a period of time

#### Construction Phase

In addition to these measures, the following must also be considered and utilised during construction works where necessary to protect identified sensitive receptors.

- Batter back soil stockpiles (or sheet if necessary). Site soil stockpiles away from rivers and drains.
- Placement of [gully guards](#) or other third-party proprietary measures (or standard protection, e.g. terram) in all gullies during construction and inspected regularly as part of a routine inspection.
- Gully protection measures must be replaced / cleaned regularly.
- Drawing showing Gully positions.
- All Gully protection measures must be installed as per the manufacturers installation guidance.
- Avoid tracking or washing out next to surface waters.
- In hot weather, avoid using too much water to suppress dust on the roads.
- Consider blocking gullies located adjacent to sensitive site areas, including mortar silo locations.
- Protected drain using Terram.
- Road End Protected with Straw Bales.
- Minimise, where possible, the movement of plant on and off roads to prevent the tracking of excess soil onto roads and highways.
- Construction of speed ramps to slow traffic down can also be used to help direct surface water to collection areas.
- Placement of topsoil at the earliest opportunity to control surface run-off from completed plots / areas.
- General good housekeeping on site roads and regular monitoring of control measures e.g. regular cleaning of gully bags / protection.
- In more severe cases, the Technical / Design Team may specify the installation of silt fencing. This solution is used to control silt run-off into watercourses or onto roads where significant run-off is



anticipated or identified. The silt fence must be cleaned regularly and after any build-up from heavy rain to ensure effectiveness.



### 9.5.3 'NON-ACTIVE' ZONES OF THE SITE

Protection measures that can be considered on non-active areas / sections of the site to protect sensitive receptors include:

- maintain grassed / vegetation cover of the areas of site which are not due to be developed during the current calendar year. Note: this requires management to prevent the establishment of an ecological habitat; and
- minimise the movement of any plant cover within these areas / sections of the site to reduce disturbance of existing surface cover

### 9.5.4 GENERAL

The use of the TW Environmental Advice / Incident Line or calls to the appointed Environmental Consultant must be made if you are concerned that current controls are not proving to adequately control silt run-off / discharge, or you are dealing with a large amount of silty water that needs to be pumped or is causing issues on site.

You must have an environmental permit/discharge consent (that includes the build phase) to discharge silty water to drains, surface waters and ground water as appropriate with the regulatory body (Environment Agency / National Resources Wales/ Scottish Environment Protection Agency).

- Temporary discharge of clean uncontaminated water to rivers and streams does not normally need an environmental permit/discharge consent, if you can comply with the Environment Agency Regulatory Position Statement 261 (maximum 3 months). See section [9.5.7 Site Environmental Issues and Controls](#) for more details.
- Environmental permits/discharge consents should be sought and applied for as early as possible by the technical and commercial teams.
- In Scotland, if you comply with certain specified conditions, a discharge can be covered by a General Binding Rule and SEPA do not need to be contacted. See section [9.5.7 Site Environmental Issues and Controls](#) for more details.
- You will need a license from SEPA to regulate construction related surface water if your construction site will: have a construction area greater than 4ha; or greater than 5km of track or road; or greater than 500m or 1ha of ground with a slope greater than 25 degrees.
- Consents granted for your site need to be fully understood by the whole Site Management Team, contractors and operatives involved to ensure that adequate control is maintained to meet the conditions of the Consent.
- Ensure site campaign material, specifically 'Silt Run-off prevention and protection', is displayed prominently.
- Deliver a toolbox talk to your groundworkers to raise awareness of silt management.
- Site Safe Briefing: Silt Management (Site Safe Briefing Folder)
- Monitoring of controls / site conditions must be carried out on a regular basis by the site team and their groundworks contractor, including:
  - regular inspection of all gully protection, silt fencing, etc.;
  - inspection and management of temporary discharge control areas to ensure they are

- not blocked or over-filled; and
- inspection of adjacent surface water streams on a weekly basis and daily during periods of heavy rainfall.
- Regular Inspection and management of surface water discharge points. (inspection locations and frequencies can be discussed / supported by RSK)
- A record of the checks and actions taken must be maintained, particularly as mitigation in the event of an incident / visit from an Enforcing Authority.

### 9.5.5 ROAD SWEEPERS

When sourcing road sweepers, consideration must be given to the requirement of a new build construction site. Water tank, storage and suction capacity are all key factors to ensure a cost effective and satisfactory visit occurs. General road sweeping residues are classified as non-hazardous waste. However, if contaminated with oil, e.g. after a spill, they need to be classified as hazardous waste. Road sweepers are contracted on a site-by-site basis and in many cases the sweeper may clean several third-party sites in addition to TWs in any one working day.

To ensure that Taylor Wimpey complies with its Waste 'Duty of Care' when employing road-sweeping contractors on site, the Site Manager must:

- Check that section 3 of the Site Waste Management Matrix records the details of any road sweeping contractor employed on site (if not, contact your Commercial Department). Note: if the road-sweeper has been provided by the Groundworks Contractor, the details are found in Section 1 of the Matrix.
- Ensure that road sweepers do not clean up after spills on site. (If a spill has occurred, contaminated material must be collected and disposed of separately as a hazardous waste);
- Ensure that sweepers leave the site with their load intact and have received a fully completed waste transfer note from the driver which aligns with the Site Waste Management Matrix ensuring that arisings are taken to a fully licensed facility. If road sweepings are inadvertently discharged on site, these must be disposed of appropriately.



### 9.5.6 EXCAVATIONS AND DEWATERING

Water generated by dewatering excavations is normally heavily laden with silt and must therefore be treated prior to any discharge to drain or surface water. The simplest solution may be to pump the water to a grassy area of the site to allow natural filtration to remove the silt. However careful control and supervision is required to ensure that the area does not become saturated causing silt laden water to simply flow across the ground surface. When discharging to grassy areas, consider utilising silt matting or filtration bags to additionally slow and control the rate of discharge. Where possible the dewatering pump must switch off before the last portion of water is removed as this is likely to contain the highest levels of silt.

#### General

- You must allow suspended solids to settle out of silty water before it is discharged, e.g. by filtering through appropriate measures. See section 9.5 Silt Management.
- Water from contaminated sites or that is suspected to be contaminated (e.g. odour, sheen, colour) must be tested before pumping commences (contact the TW Environmental Advice / Incident Line if unsure of the action necessary). Contaminated water may need to be treated or disposed of off-site.
- You must understand what activities/works are covered by any environmental permits or discharge consents obtained for your site. Ask the Technical department for assistance / advice.

- You must fully understand the conditions put in place under the permit or consent before the activities/works re-commence.

### 9.5.7 CONDITIONS ATTACHED TO ENVIRONMENTAL PERMITS OR DISCHARGE CONTENT

#### ENGLAND and WALES

You must have an environmental permit (discharge consent) to discharge water from excavations unless the discharge is temporary (i.e. for less than 3 months) and meets all of the following criteria: You must apply for a water discharge activity permit if you cannot comply with the conditions of the RPS.

Discharge only uncontaminated, clean water. (Uncontaminated, clean water is water that is wholly or mainly clear rainwater or infiltrated groundwater that has collected in the bottom of temporary excavations on an uncontaminated site.)

Document, have a plan and method statement that minimises the risk of pollution to minimise contaminants such as silt entering the excavation. Documents should also include a plan for disposing water that enters the excavation; a plan to not use / minimise machinery in excavations while dewatering is taking place.

Discharge is made to a surface water (a river, stream or the sea);

Discharge will not pollute the surface water or adversely affect aquatic life, e.g. silt pollution;

Discharge location is not within, or less than 500 metres upstream of a European Conservation site (river or coastal), SSSI (Site of Special Scientific

Interest), Special area of conservation (SAC), Special protection area (SPA), Site of community importance, or Ramsar site or within a site designated for nature conservation – your Technical Department will advise.

You must not; discharge silty water containing fine or coarse suspended solids into surface water

You must not; discharge site drainage from surface areas such as haul roads, storage or working areas.

You must not; pollute surface water,

You must not; discharge water containing any chemical dosing agents, flocculants or coagulants.

You must not discharge from a site which is contaminated by oil, metals, hydrocarbons, solvents or pesticides or other polluting substances.

You must not; discharge from a site with naturally elevated concentrations of substances which exceed environmental quality standards.

You must not discharge concrete wash water even if it has been treated.

Discharge will not lead to flooding; and

Discharge will not cause erosion of the banks or bed of the surface water.

Keep records for 2 years that show you have complied with this RPS and make these records available to the Environment Agency on request.

Contact the TW Environmental Advice / Incident Line if you are unsure or cannot meet these requirements.

## SCOTLAND

SEPA has General Binding Rules (GBRs) that can allow the dewatering of excavations and subsequent discharge of water without a discharge permit provided the following conditions are met:

Any water removed from the excavation is discharged to a surface water drainage system;

Where groundwater flow rates are high (e.g. in areas of sands and gravels and sandstone) water can only be removed from the site for up to 5 days within any 180 day period;

Where groundwater flow rates are low (e.g. in areas of silts and clays) water can only be removed from the site for up to 180 days;

Groundwater cannot be removed from excavations within 250m of a wetland or an abstraction used for any purpose other than dewatering (e.g. drinking water borehole);

Suspended solids must be filtered/settled out prior to discharge (e.g. via a silt trap, straw bales or settlement pond);

Contaminated water cannot be discharged; and discharge must be managed to prevent damage / erosion to the banks or the bed of the receiving river or stream, e.g. control of flow rate.

Discharge of water run-off from a construction site to the water environment where the site, including any constructed access tracks, does not:

- (i) exceed 4 hectares;
- (ii) contain a road or track length in excess of 5km; or
- (iii) include any area of more than 1 hectare or any length of more than 500 metres on ground with a slope in excess of 25°

Your Technical Team will advise whether your discharge meets the requirements of the GBR or if a permit is required.

### 9.5.8 SETTLEMENT TANKS and FLOCCULANTS

If the passive on site measures described above is assessed as insufficient to control off-site discharges of silt, settlement tanks and flocculants can be used to treat outflows prior to discharge. Settlement tanks provide a mobile silt trap that separates the suspended solids from the water. The use of pumps and generators will be required. Contact your Technical team or TW Environmental Advice / Incident Line if you think one may be required on site.

Flocculants can be utilised either within a tank based system offered by companies such as **Silt Buster**. Alternatively they can be utilised in block form (offered by companies such as **Frog Environmental**) and added to swales or drainage networks. Consideration must be taken on managing the appropriate discharge to retain flocculated sediment. Use of flocculant on sites will require a Bespoke Environmental Discharge Permit. Contact your Technical team or TW Environmental Advice / Incident Line if you think one may be required on site.





### 9.5.11 SITES AT RISK OF FLOODING

Flooding can be caused in a number of ways and some locations are more sensitive to the risk of flooding than others. The risk of flooding at a site must have been assessed by the Technical Department. If you are working on a site which has been identified as at a higher risk of flooding this must have been included in the **Site-Specific Environmental Action Plan (SSEAP)**



Site Managers working on sites which have been identified as being at a higher risk of flooding caused by a site's close proximity to the coast or a watercourse must sign up for Flood Alerts and Flood Warnings from the Environment Agency, Natural Resources Wales or SEPA. Registration is simple and the alerts/warnings can be sent via text and/or email to your TW phone and email address. Alerts indicate that flooding is possible, and warnings are given when flooding is expected.

During periods of intense rainfall or large storms you must ensure the water levels are monitored to provide an early warning of raising levels likely to cause flooding. Even sites not located close to a water course, or the coast must monitor the effect of intense rainfall across the site in case of any failures to the site surface water drainage, such as it being blocked or becoming overwhelmed with the volume of water which can also lead to flooding.

If you receive a Flooding Warning that indicates flooding on site, undertake flood defence actions, e.g. deploy sandbags, and manage materials to limit potential damage caused.

### 9.6 Contaminated Land



Contaminated land can pose serious health risks to workers and nearby communities. Exposure to hazardous substances such as heavy metals, hydrocarbons, asbestos, and chemicals can occur through direct contact, inhalation of dust or vapours, or ingestion of contaminated soil or water. These exposures may lead to respiratory illnesses, skin irritation, neurological damage, or long-term diseases like cancer. Proper site investigations, risk assessments, and remediation measures are essential to identify and control contamination. Effective management protects human health, prevents environmental harm, and ensures safe redevelopment of affected land.



Contaminated land presents significant safety risks on construction sites, including exposure to toxic chemicals, gases, and unstable ground conditions. Workers may encounter hazards such as flammable vapours, corrosive substances, or confined spaces with poor air quality. Disturbing contaminated soil can release harmful dust and fumes, increasing fire, explosion, or poisoning risks. Implementing thorough site assessments, contamination mapping, and control measures, such as personal protective equipment (PPE), ventilation, and safe excavation methods, helps reduce danger. Proper training and supervision ensure worker safety and compliance with environmental and health regulations.



Contaminated land poses serious environmental issues, affecting soil, water, and ecosystems. Pollutants such as heavy metals, hydrocarbons, and chemicals can leach into groundwater and surface water, harming aquatic life and reducing water quality. Soil contamination can inhibit plant growth and disrupt natural habitats, leading to loss of biodiversity. Airborne dust and vapours may also spread pollution beyond the site.

Effective management includes site investigations, containment, and remediation to prevent further contamination. Addressing these issues protects ecosystems, supports sustainable development, and ensures long-term environmental health and safety.

### 9.6.1 GROUND REMEDIATION

Remediation works are likely to have been initiated and completed prior to the construction phase commencing. However, there are occasions when remediation continues into the construction phase or is initiated if further contamination is discovered. Remediation works which are progressing in advance on the construction phase of the site is documented in your SSEAP. If further contamination has been discovered, it may be necessary to update your SSEAP, this is completed by the Technical Department.

Any remediation is normally carried out by a specialist ground remediation contractor.

If you need further information regarding the ground remediation on your site, contact your Production Manager / Director. Other sources of information are available such as the Remediation Statement for the site.

### 9.6.2 GAS MEMBRANES

Depending on the ground, gases can be present in soils beneath a site. There may be a requirement to include Ground Gas Protection as part of a development. The specific requirements for gas protection measures are identified by the Technical Department who must communicate the requirements to you to ensure the appropriate membrane installation and level of verification is achieved.

If ground gas protection measures are not adequately employed, the key areas of a property where ground gases can enter a property are through wall cavities, gaps around services and construction joints.

The potential hazards associated with gas ingress to properties include:

- Asphyxiation of people in the property, with the potential to cause loss of life;
- Chronic diseases associated with long term exposure to various vapours/ground gases, for example carcinogens; and
- Explosion within the property, causing damage, injury and potentially loss of life.
- 

It must also be noted that if gas membranes are not installed correctly, the local authority/ NHBC may not discharge relevant planning conditions / warrants, which can affect progress of the development.



#### Installation and Inspection of the installed gas protection system

On sites where Ground Gas Protection measures have been recommended; a design report for protective measures should be produced prior to development, this will detail;

- Protective measures.
- Product specifications.
- Detailed design drawings.
- Details of installer, their qualifications and method statement.

Verifications requirements to satisfy Local Authority and NHBC, It is important that this inspection and verification is completed prior to the membrane being covered by later phases of construction, e.g. concrete floors.

**Preparation of substructure**

**Provision of binding layer**

**Membrane extending over internal and cavity walls**

**Joints in the membrane are secure**

**After installation of the gas membrane**

It is imperative that gas membranes are protected immediately after installation, to prevent damage. The Site Manager must emphasise the importance of protecting the membranes to follow-on trades.

The period over which an installed membrane can be left open to the weather must be minimised. Membrane materials can degrade when subject to ultraviolet light in sunlight and adverse wet or cold weather.

If reinforcing concrete is to be laid on top of membranes, measures must be taken to protect the membrane from damage from the reinforcing bars.

Air bricks (if installed) must be kept free of obstruction and ensure that landscaping plans do not result in blocking or limiting air flows.

**9.7 waste Management**



Waste management and disposal is a highly regulated environmental issue. And can be costly if it isn't done correctly.

TW has a Duty of Care to manage waste produced compliantly to protect the environment and human health whilst applying the principals of the Waste Hierarchy. Through good pre-planning and materials management, the amount of waste produced can be reduced or even eliminated.

Note: No burning of waste is permitted on site

Much of the material which could become a waste could likely be re-used on site, rather than simply sending off site as waste, e.g. timber off-cuts or pallets.

**9.7.1 WASTE CLASSIFICATION**

HAZARDOUS WASTE	NON-HAZARDOUS WASTE
Aerosols (e.g. expanded foam cans)	Part-Full Water Based Paint Tins
Part-Full Solvent Based Paint Tins	Empty Paint Tins
Part-Full Mastic Tubes or Cut Off Tips	Empty Mastic Tubes (Tips removed)
Part-Full Grip-Fill Tubes or Cut Off Tips	Empty Grip-Fill Tubes (Tips removed)
Gas Cartridges	Empty Terrain Liquid Weld Tubes
Expanded Foam Cans (full or empty)	Timber
Part-Full Terrain Liquid Weld Tubes	Cable
Used spill kit materials (contaminated with oil)	Packaging (plastic and cardboard)
Broken/ faulty fluorescent tubes / long life bulbs	Metal (e.g. pipe)
	Bricks

NB: this relates to common construction materials used on site. Demolition or unexpected contamination will need to be addressed separately. Contact your Technical team or TW Environmental Advice / Incident Line if you identify unexpected contamination / hazardous materials.

Both hazardous and non-hazardous wastes must be managed correctly and compliantly. All sites produce hazardous waste (called 'special waste' in Scotland). If you are unsure which category a particular waste is hazardous or non-hazardous, contact the Environmental Advice / Incident Line, segregate the waste away from other wastes and materials and do not remove it from site until you have received advice

### 9.7.2 DEALING WITH HAZARDOUS WASTE

Generally, materials with a hazard symbol on the packaging are likely to be considered as hazardous waste if being disposed of.

Note: empty containers may be regarded as non-hazardous waste, such as empty water based paint tins and empty mastic tubes (tips carrying residue removed).



#### Hazardous waste:

- Must be segregated on site and not mixed with other wastes;
- Must not be placed in general waste container, e.g. RELs, FELs in builder's skip; and
- Must be stored in dedicated, labelled containers used for hazardous waste items at a dedicated hazardous waste storage location – see below
- Contact Reconomy for suitable removal / disposal from site.



As part of our waste management control, contractors are encouraged to use part-full paint tins and mastic tubes on subsequent plots. This helps reduce the quantity of waste produced and in addition, costs.

### 9.7.3 REMOVAL OF HAZARDOUS WASTE FROM SITE

Before hazardous (special) wastes can be removed from site, details of what makes the waste hazardous, e.g. the particular chemical and its concentration, must be provided to the Waste Contractor. This process is managed through the Commercial Department (or the Technical Department in relation to contaminated soils).

### 9.7.4 STORAGE OF HAZARDOUS SUBSTANCES

Hazardous substances. E.g. oils, solvent based paints etc. must always be stored, handled and disposed of in accordance with their COSHH assessments.

[Go to COSHH Assessments](#)

## Storage:

- Store away from watercourses and drains and in a contained or bunded area;
- Store in an area away from traffic or risk from impact;
- Store in a locked, bunded and clearly signed COSHH container when not in use, located away from the site boundary; and
- Label all containers and seal when not in use (with containers checked regularly for signs of damage and leakage).

## Usage:

- Drums containing liquid must be placed on appropriately sized drip trays / bunds when used on site;
- Only the amount required for a particular job is to be taken to the place of work;
- If substances are being decanted into other containers, these containers must be appropriately labelled and suitable; and
- Containers must remain closed when not in use and returned to the material store at the end of the day.

Taylor Wimpey

### COSHH Assessment

Hazardous to health when	Exhaled in	Swallowed	In contact with skin	In contact with eyes
Without this work done	Outside	Inside well-ventilated	Inside poorly ventilated	Control space

Personal Protective Equipment (PPE)

--	--	--	--	--	--

**Required Control Measures**  
 Surface protection: Wear eye protection. Avoid contact with face.  
 Hand protection: Wear protective gloves.  
 Environmental exposure control: This product does not pose a hazard in normal use when following the usage instructions.

**Disposal Methods**  
 Dispose of according to local regulations. Avoid disposing into drainage systems and into the environment. Dispose of contaminated packaging in the same way as the product itself. Noncontaminated packages may be recycled.

---

Always Check Information on the Material Safety Data Sheet, Container and COSHH Assessment

<b>Standard First Aid</b>	<b>First Aid</b> For eye exposure: Rinse with water for 15 minutes. For skin exposure: Wash with soap and water. Remove contaminated clothing and shoes. If irritation experienced: Seek medical advice if recovery not rapid.	2-4
<b>Inhalation:</b>	Do not rub eyes. Rinse cautiously with water for several minutes. Remove contact lenses, if present and easy to do. Continue rinsing. Get medical attention immediately.	
<b>Eye contact:</b>	Rinse skin thoroughly with soap and water. Remove contaminated clothing and shoes. Rinse skin thoroughly with water. Get medical attention if irritation persists after washing.	
<b>Skin contact:</b>	Rinse water if symptoms persist seek medical advice.	
<b>Ingestion:</b>	Seek medical advice.	

If in any doubt, seek medical advice. Make sure you know exactly what you have been using and pass this information on to the nurse, doctor, or medic.

SIGNATURE	PRINT	DATE

Document reference: COSHH Assessment Template

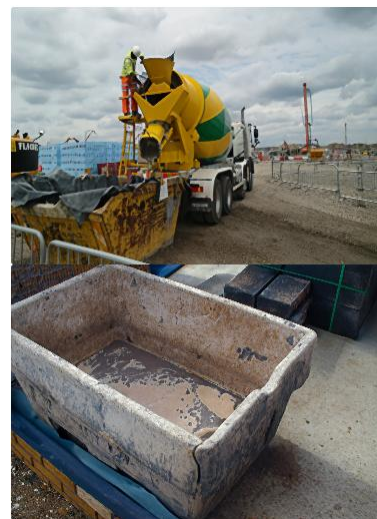
## Disposal:

- The COSHH assessment details how to dispose of empty / damaged or old containers; and
- Safety Data Sheets (SDS) which are compliant with the REACH regulations can be used to assess waste disposal options. If in doubt, contact the [TW Environmental Advice / Incident Line](#).
- Do not dispose of the waste until you have clear advice and guidance on what is required.

### 9.7.5 CEMENT, CONCRETE and GROUT

Cement, concrete and grout are alkaline materials with high sediment and fine particles, meaning they can cause significant environmental harm and pollution to soils, groundwater and watercourses etc. if not managed correctly. Management of Cement, Concrete and Grout usage on sites should be controlled by a Site Specific Method Statement to include control measures, monitoring, inspection, staff training and incident response relating to management of concrete washout water in line with the Environment Agency's Regulatory Position Statement 287.

All those on site who interact with and manage cement, concrete and grout washout must be aware of correct method and Site Specific Method Statement and the requirements. Where concrete lorries are utilised to bring concrete to site, they must not washout directly onto the ground, including footings or to surface water and / or foul drainage systems. They should be encouraged to not wash out on site and wash out back at their depot, or if they need to washout on site, it must be into a signed, dedicated, lined, secure container e.g. a skip, with a freeboard of 10% capacity, which captures all the washout liquid and solids.



For containers which are utilised on site to mix cement, concrete or grout, or contain it after mixing these must also be washed out into signed, dedicated, lined, secured container with a freeboard of 10% capacity to capture all the washout liquid and solids.

No more than 30m<sup>3</sup> of washout water containing concrete can be stored at any time.

The washout from these activities cannot be stored within 10m or any watercourse or within 50m of:

- Site of Special Scientific Interest;
- Special Areas of Conservations (SACs) or proposed SACs;
- Specials Protection Areas (SPAs) including potential SPAs;
- Ramsar sites – wetlands of international importance (both listed and proposed);
- Marine Conservation Zones;
- Other nature sites such as ancient woodlands and local and national nature reserves; and
- Local wildlife sites.

The washout can be allowed to dry and the resultant solids removed from site as waste or if weather conditions does not permit for the washout to dry, then it must be removed appropriately and disposed of off site to an appropriately permitted waste facility.

The washout containers must be regularly inspected, at least weekly, to ensure they are compliant with the Method Statement requirements, are containing the washout sufficiently and not causing environmental harm. Mortar silo arrangements are outlined in the site set up (INSERT LINK).

### 9.7.6 GENERAL WASTE CONTAINERS (Non-hazardous)

<p><b>Supplier</b></p> <p>Reconomy Solutions Ltd          Telephone: 08000 280578 (dedicated TW line)          Fax: 01952 236611          Operations: Orders, Call offs, Account management and Customer care</p>
---

Best practice is to use segregated skips for specific waste, limiting the use of costly builders' skips. (Use of builder's skips must be authorised by the Production Director).

<p><b>Light Mixed / Compactable</b></p> <ul style="list-style-type: none"> <li>✓ Polythene (shrink-wrap)</li> <li>✓ Cardboard</li> <li>✓ Plastic off-cuts</li> <li>✓ Material packaging</li> <li>✓ Metal banding</li> <li>✓ Canteen waste</li> <li>✓ Polystyrene</li> <li>✓ Insulation</li> </ul> <p>✗ Inert materials should be stockpiled for reuse          ✗ Suppliers remove own packaging from site</p>	<p><b>Inert</b> Stockpile for reuse</p> <ul style="list-style-type: none"> <li>✓ Concrete</li> <li>✓ Hardcore</li> <li>✓ Stone</li> <li>✓ Bricks / blocks</li> <li>✓ Broken roof tiles</li> <li>✓ Broken clay pipes</li> <li>✓ Broken kerbs</li> <li>✓ Broken paving</li> </ul>	<p><b>Timber</b></p> <ul style="list-style-type: none"> <li>✓ Clean Timber (Skip length to store from 400mm for reuse)</li> <li>✓ MSF</li> <li>✓ Plywood</li> <li>✓ Chipboard</li> <li>✓ Treated wood</li> </ul> <p>✗ No pallets – stack separately for collection</p>
---	---	--

Ensure RELs/FELs are completely full prior to removal (closed skips enable a greater volume of waste to be loaded). Overweight charges are cheaper than extra collections! Avoid nil collections by managing your site collection schedules - a fee is still applied to these (even if no waste removed).

### 9.7.7 WASTE SEGREGATION AREA / SIGNAGE PACKS

Appropriate signage must be used on site to identify to operatives' what material is permitted in each container.

<p><b>Construction Waste</b> Use the correct skip</p> <table border="1"> <tr> <td>Light Mixed / Compactable</td> <td>Timber</td> </tr> <tr> <td>Plasterboard</td> <td>Inert</td> </tr> </table> <p>Unauthorised use of skips will result in a charge to the contractor</p>	Light Mixed / Compactable	Timber	Plasterboard	Inert	<p><b>No Flytipping</b> Unauthorised use of skips will result in a charge to the contractor</p>
Light Mixed / Compactable	Timber				
Plasterboard	Inert				

### 9.7.8 DOCUMENTATION FOR TRANSFER and WASTE DISPOSAL

Hazardous / Special Waste: A Hazardous Waste Consignment Note is required for each individual load.

**Hazardous / Special Waste:** A Hazardous Waste Consignment Note is required for each individual load.

**Non-hazardous Waste:** A Duty of Care Waste Transfer Note is required.

Your approved Waste Contractor must complete the documentation for all general construction wastes and your sub-contractor for site arisings they are removing from site. Refer to your Site Waste Management Matrix

### 9.8 PLOT SURPLUS MATERIAL (REDUCING WASTE)



Managing surplus building materials and reducing waste provides significant environmental benefits. It minimizes the extraction of raw materials, conserving natural resources and reducing energy consumption and emissions from manufacturing. Reusing and recycling materials decrease landfill waste and pollution, helping protect soil and water quality. Efficient material management also reduces transportation impacts, cutting carbon emissions. By adopting sustainable practices such as reusing surplus products and careful planning, construction projects lower their environmental footprint, promote circular economy principles, and contribute to a cleaner, more sustainable built environment.

Inert material (bricks, blocks, clay pipes, roof tiles, ceramics) – stockpile and remove via Grab Wagon or other container to benefit from lower disposal costs. If other wastes, e.g. plastic sheeting, gets mixed in, it may not be possible to have the material removed as inert.

Timber and Metal wastes should be segregated for subsequent removal wherever possible. Note: Chipboard / MDF are not classified as timber for waste purposes and should always be kept separate from timber wastes Treated timber may also need to be segregated from untreated.

Compactable Active Waste – Use REL or FEL (e.g. paper, card, polythene, packaging, and wood, plastic, MDF off-cuts less than 600mm in length)

Plasterboard Waste – Use British Gypsum Dumpy Bags / designated skips.

Should you need further assistance in identifying ways to maximise waste segregation or minimise waste production on site, contact your Production Manager or regional Reconomy Solutions or other approved Waste Contractor contact.



### 9.9.1 SITE MANAGERS RESPONSIBILITIES

- Your [Site-Specific Environmental Action Plan \(SSEAP\)](#) details if any protected species, trees or hedgerows or invasive weeds have been or are present on your site. It advises you of any protection measures required, any licences that need to be applied for or adhered to and any tree preservation orders that need to be adhered to. This must include ensuring that they are clearly marked on the Site Plan.
- If none are shown in your SSEAP and you then identify a protected species or invasive weed, you must immediately seek specialist help by calling the [TW Environmental Advice / Incident Line](#).
- Refer to the Protected Species Guide provided in the site environmental start-up pack to assist in the identification of the most common types of protected species.
- Refer to the Invasive Weeds Guide provided in the site environmental start-up pack to assist in the identification of the most common types of invasive weeds.
- Ensure site campaign material, specifically the 'Invasive Weeds Guide', is displayed prominently.
- Inspect weekly (as a minimum) to ensure that identification and control measures are being adequately.
- There are specific requirements associated with the disposal of Japanese knotweed and some other invasive weeds as waste. Contact the Technical Department for advice.
- When working near [trees](#), ensure fencing has been erected at least 1m back from the canopy and ensure that no work occurs within this area .
- If identified [hedgerows](#) need to be removed, you must contact the Land & Planning / Technical Department who must then contact the local authority to obtain the relevant consent.
- Deliver Site Safe Briefing: Environmental Management. to advise all site staff and provide guidance on the identification of invasive weeds and any control measures.

### **9.9.2 PROTECTED TREES and HEDGEROWS**

#### **Trees;**

A local authority may protect trees on a development site through Tree Preservation Orders (TPOs) or planning conditions. Additionally, nesting birds are protected, and their disturbance may be an offence. The best method for protecting retained trees is to exclude any activity from the Root Protection Area (RPA). Protective barriers and ground protection must be erected around the RPA of the trees as a minimum. Heras fencing is now recommended as suitable protective fencing. Your SSEAP (see section 9.1.1 Site Specific Environmental Action Plan (SSEAP)) identifies what level of protection is required and if special considerations need to be considered. Fencing/signage, indicating that this is an exclusion zone, and no access is permitted must be constructed.



#### **Hedgerows;**

Hedgerows are protected by legislation in England and Wales (not Scotland), and consent must be sought from the local authority for their removal or disturbance. Protection may also be requested through planning conditions. The Land & Planning / Technical Department have consulted the local authority, and if necessary, an ecologist to confirm what conditions apply to hedgerows on your site. The details of any protection requirements are included in your SSEAP.

### **9.9.3 INVASIVE WEEDS**

Invasive weeds can spread rapidly, compete with native species, and destroy natural habitats. They are highly persistent and extremely difficult to control and eliminate once established, potentially causing structural damage to buildings and concrete and harming humans or animals. To knowingly allow certain weeds to spread from your site is an offence – e.g. Japanese knotweed. It is important to be aware of which weeds can cause problems and to ensure that these are identified early and controlled on your site.

## Invasive Weeds

This guidance is to assist Site Managers in identifying invasive weeds. All of these weeds spread rapidly. It is important that there are identified at the earliest opportunity. If you identify or suspect you have any of these invasive weeds on your site take precautions to prevent the area from being disturbed.

Seek further guidance from your Technical Team or the Environmental Advice Line 0845 003 8752 before taking action.

<p style="text-align: center; font-weight: bold; font-size: small;">Japanese Knotweed</p> <div style="display: flex; justify-content: space-around;"> </div> <p style="font-size: x-small;"> <b>Spring</b>                      <b>Summer</b>                      <b>Winter</b> </p> <p><b>Issues</b></p> <ul style="list-style-type: none"> <li>• Grows through hard surfaces</li> </ul> <p><b>Identification</b></p> <ul style="list-style-type: none"> <li>• Can reach heights of 2-3m</li> <li>• Red/purple shoots; smooth, green speckled red stem; hollow brown canes</li> <li>• Shovel shaped leaves that alternate on stem</li> <li>• Lush green arching stems</li> <li>• Clusters of creamy white flowers in late summer</li> </ul>	<p style="text-align: center; font-weight: bold; font-size: small;">Himalayan Balsam</p> <div style="display: flex; justify-content: space-around;"> </div> <p style="font-size: x-small;"> <b>Spring</b>                      <b>Summer</b>                      <b>Winter</b> </p> <p><b>Issues</b></p> <ul style="list-style-type: none"> <li>• Its removal; especially from river banks, can lead to erosion, silt issues and flooding</li> </ul> <p><b>Identification</b></p> <ul style="list-style-type: none"> <li>• Grows mainly on river banks and in damp conditions</li> <li>• Upright, hollow, purple tinged stem</li> <li>• Common height of 0.5-2m</li> <li>• Flowers vary in colour from white through to pink/purple</li> <li>• Leaves have jagged edges and grow three to each stem</li> <li>• Decays very fast following die back</li> </ul>	<p style="text-align: center; font-weight: bold; font-size: small;">Giant Hogweed</p> <div style="display: flex; justify-content: space-around;"> </div> <p style="font-size: x-small;"> <b>Spring</b>                      <b>Summer</b>                      <b>Winter</b> </p> <p><b>Issues</b></p> <ul style="list-style-type: none"> <li>• Sap burns skin causing blisters in sunlight</li> </ul> <p><b>Identification</b></p> <ul style="list-style-type: none"> <li>• 5-7 years life cycle, flowers in final season only.</li> <li>• Flower head is cone shaped and contains several thousand small white flowers</li> <li>• Leaves are jagged, can reach over 1m in diameter</li> <li>• Can reach 5m tall but typically 2-3m.</li> <li>• Thick stout green-reddish purple stem with bristles</li> </ul>
<p style="text-align: center; font-weight: bold; font-size: small;">Horsetail (Mare's Tail)</p> <div style="display: flex; justify-content: space-around;"> </div> <p style="font-size: x-small;"> <b>Spring</b>                      <b>Summer</b>                      <b>Winter</b> </p> <p><b>Issues</b></p> <ul style="list-style-type: none"> <li>• Grows through hard surfaces</li> </ul> <p><b>Identification</b></p> <ul style="list-style-type: none"> <li>• Shoots 20-50cm tall</li> <li>• Stems commonly 50-75cm tall</li> <li>• Dense green foliage</li> <li>• Die back late winter</li> </ul>	<p style="text-align: center; font-weight: bold; font-size: small;">Common Ragwort</p> <div style="display: flex; justify-content: space-around;"> </div> <p style="font-size: x-small;"> <b>Spring</b>                      <b>Summer</b>                      <b>Winter</b> </p> <p><b>Issues</b></p> <ul style="list-style-type: none"> <li>• Toxic to cattle and horses</li> </ul> <p><b>Identification</b></p> <ul style="list-style-type: none"> <li>• Often found as leafy clusters</li> <li>• Light to dark green leaves deeply lobbed leaves</li> <li>• Grows 30-100 cm high</li> <li>• Woody stems which are red at the base</li> </ul> <p style="font-size: x-small;">Photos courtesy of the British Horse Society</p>	




### 9.9.4 PROTECTED SPECIES

There are several species in the UK that are protected by environmental legislation, such as badgers, great crested newts and bats. In many cases, it is an offence to disturb the species or damage their habitat. If identified or suspected on site, contact the [Environmental Advice / Incident Line](#).

**Note: The habitat may also be protected along with the species and not just during breeding seasons**

## Protected Species

This guidance is to assist Site Managers in identifying protected species. All of these animal species are strictly protected under law. It is important that they are identified at the earliest opportunity. If you suspect you have or identify any protected species on your site you must take precautions to prevent them being harmed or disturbed. Seek further guidance from your Technical Team or the Environmental Advice Line 0845 003 8752 before taking action.

BIRDS	BADGERS	WATER VOLES
 <p><b>Background</b></p> <ul style="list-style-type: none"> <li>All wild bird species are protected by law.</li> <li>You will break the law if you knowingly and intentionally damage or destroy a nest; or if you take or destroy eggs.</li> <li>Some species of birds are afforded extra protection (e.g. Barn owl) and you cannot disturb them whilst nesting or building nest or disturb their young.</li> </ul> <p><b>Identification</b></p> <ul style="list-style-type: none"> <li>Birds will nest in a variety of locations including trees; hedgerows; on the ground in scrub or grassland; and within buildings.</li> <li>Nesting season for most birds occurs between March and September. However, some species may nest earlier dependent on the weather.</li> </ul> <p><b>Protection measures</b></p> <ul style="list-style-type: none"> <li>Carry out an inspection of vegetation or buildings prior to removal, both in and out of the breeding season.</li> <li>Carry out vegetation removal and demolition works out of the breeding season.</li> <li>Net vegetation out of the nesting season to prevent birds from nesting.</li> <li>Avoid disturbing nesting birds and their young (especially those given greater protection such as the barn owl) by reducing noise, lighting and vibration.</li> </ul>	 <p><b>Background</b></p> <ul style="list-style-type: none"> <li>Badgers and their setts are protected by law.</li> <li>You be breaking the law if you: <ul style="list-style-type: none"> <li>willfully capture, kill or injure badgers;</li> <li>damage, destroy or block access to setts; and</li> <li>disturb badgers in setts.</li> </ul> </li> </ul> <p><b>Identification</b></p> <ul style="list-style-type: none"> <li>Evidence of badgers on/off site include: sett entrances, badger paths, latrines, scratching posts, evidence of digging for food, footprints, and badger hair on fences or bushes.</li> </ul> <p><b>Protection measures</b></p> <ul style="list-style-type: none"> <li>Use of badger protection zones at certain distances from sett entrance: <ul style="list-style-type: none"> <li>✓ 30m heavy plant;</li> <li>✓ 20m lighter machinery; and</li> <li>✓ 10m light work, such as using spade.</li> </ul> </li> <li>Chemicals should not be used within 20m of sett.</li> <li>Disturbances, such as loud noise or vibration, should be avoided or limited to areas well away from the sett.</li> <li>Maintain foraging/watering areas and access between them and the setts.</li> <li>Avoid disturbance of setts during the breeding season (i.e. between the beginning of December and the end of June).</li> </ul>	 <p><b>Background</b></p> <ul style="list-style-type: none"> <li>Water voles, their breeding sites and resting places are protected by law.</li> <li>You will be breaking the law if you: <ul style="list-style-type: none"> <li>knowingly and intentionally capture, kill or injure water voles;</li> <li>damage, destroy or block access to their places of shelter or protection; and</li> <li>disturb them in a place of shelter or protection.</li> </ul> </li> </ul> <p><b>Identification</b></p> <ul style="list-style-type: none"> <li>Found within and on banks of various water features (i.e. rivers, ditches, lakes, ponds, canals, etc.).</li> <li>Survey by professional ecologist should be able to identify presence of water voles within area.</li> <li>Presence of water voles can be identified from burrows within water banks and footprints.</li> <li>Water voles do not hibernate, but they are not very active above ground during winter months.</li> </ul> <p><b>Protection measures</b></p> <ul style="list-style-type: none"> <li>Avoidance of polluting water environment (i.e. through silt run-off, chemical spillage, etc.).</li> <li>Do not entirely fence off area to enable water vole to forage for food.</li> <li>Avoid cutting down vegetation in area.</li> <li>Do not use heavy machinery in close proximity to water bank.</li> </ul>

### 9.9.5 BIODIVERSITY NET GAIN (BNG)

Biodiversity Net Gain (BNG) plays a crucial role in the UK's new-build construction industry by ensuring that development leaves the natural environment in a measurably better state than before. By requiring projects to deliver at least a 10% improvement in biodiversity value, BNG encourages developers to integrate nature-positive design through habitat creation, enhancement, and long-term management. This approach helps balance housing and infrastructure growth with environmental protection, supports ecosystem resilience, and contributes to wider goals such as climate adaptation, improved wellbeing, and sustainable placemaking.

All plans and requirements will be detailed in the Pre-Construction Information issued by your BU Technical department and must be adhered to.

### 9.10.1 ENVIRONMENTAL IMPACTS - STATUTORY NUISANCE

Statutory nuisances are issues that affect members of the public (e.g. construction dust or noise) or their property (e.g. vibration). These can generate a significant number of resident/neighbour complaints. Your SSEAP identifies any sensitive receptors, e.g. local residents, and details the mitigation measures that are necessary to minimise the impact of the site works.

### 9.10.2 ENVIRONMENTAL IMPACTS – NOISE

Noise can be a health and safety issue as well as an environmental one. Operative-related health and safety issues associated with noise are covered in [section 3.8.7](#). Noise must be kept to a minimum on site. However, some particularly noisy activities may be necessary e.g. crushing during demolition, piling, etc. In this situation, the Technical Team may need to obtain a consent from the Local Authority permitting increased noise levels within a defined time frame. The Consent may have conditions attached which affect the operations, e.g.:



- Restriction of working hours; and
- Noise mitigation measures to be adopted. Affected contractors and operatives must be made aware of and agree to the measures.

Other measures can be used to minimise noise:

- Use generators that include noise reduction features;
- Avoid leaving generators running overnight (except where necessary for providing welfare to security or for servicing the drying room);
- Avoid locating noisy plant and equipment near sensitive receptors where possible; and
- Consider using a noise screen, e.g. placed next to the source or the receiver (see below).

### 9.10.3 ENVIRONMENTAL IMPACTS – DUST

Dust can be a health and safety issue as well as an environmental one. Operative-related health and safety issues associated with dust are covered in [3.8.3](#).

Dust can be generated throughout the year but is a potentially greater nuisance in dry weather, e.g. soil / vehicle movements.

Dust can be minimised by:

- sheeting soil/ground stockpiles;
- sheeting lorries ‘mucking’ on and off site;
- road sweeping soil impacted roads;

In most situations a quick visual inspection of adjacent homes, cars, windows, etc. can identify if dust is becoming a nuisance. The Site Manager must review with their Site Management Teams, Contractors and Operatives the need to ensure that further issues such as silt run off are not caused by excessive water use (see section 9.5)



Where complaints are received directly to the site or TWUK, the Environmental Advice / Incident Line must be contacted to ensure that the BU is made aware and corrective action is taken.

- Using water sprays to damp down roads and stockpiles;
- using water cannons to damp down large areas, e.g. demolition; and
- use of dust fencing, particularly near occupied homes



#### 9.10.4 ENVIRONMENTAL IMPACTS – VIBRATIONS

Generally, people are ‘very sensitive receptors’ in relation to the type of activity that generates both noise and vibration. Operative-related health and safety issues associated with vibration are covered in [3.8.7](#) and [3.8.8](#)

Vibration from activities such as demolition or piling activities on site may be perceived by those within close proximity of the development (residents and businesses), as being a major issue. Local residents and businesses must be consulted prior to such works commencing to ensure that these groups are made aware of the issues and to confirm that mitigation measures are in place.

Where extensive vibration is anticipated, the consultation exercise must include documenting the condition of nearby properties prior to works commencing.

Statutory nuisances are often governed by planning conditions, which will need to be adhered to. Mitigation measures be required to be outlined within the Construction Environmental Management Plan.

Where complaints are received directly to the site or TWUK, the Environmental Advice / Incident Line must be contacted to ensure that the BU is made aware and corrective action is taken.

#### 9.10.5 ENVIRONMENTAL IMPACTS – EMISSIONS

Exhaust emissions from plant and machinery can be a nuisance, particularly black or dark smoke. Minimise this by ensuring contractors maintain their plant to reduce emissions and prevent the emission of black smoke. Where possible any mobile or fixed plant that emit exhaust fumes, position them as far away as is possible from site boundaries / occupied areas.

#### 9.10.6 OTHER POTENTIAL STATUTORY NUISANCES

Other forms of statutory nuisance that must be considered for managing site are:

- **Light pollution:** the use of bright lights e.g. security lights can cause disturbance to neighbours and wildlife. If identified as an issue, then controls such as screening, directional lighting, etc to be considered to minimise the impact;
- **Insects/vermin:** untidy sites e.g. excessive rubbish or standing water around the site can lead to an increase in vermin and could create a nuisance. Good housekeeping and site working practice helps control this; and
- **Odour:** smells from sewerage e.g. blockages to storm water storage tanks or issues with sewage pumping stations, etc. if not dealt with quickly can cause the generation of bad smells. Early identification and maintenance to restore correct functioning minimises the impact.