

Charity, Community Support and Donations Policy

Taylor Wimpey is committed to supporting charities and local community groups in the areas in which we operate. We believe that as a responsible business we want to actively contribute to helping others financially, and also with our time, energy and expertise.

We aim to be an aspirational housebuilding brand that is recognised by our employees and wider stakeholders for the good that is given back within our local communities.

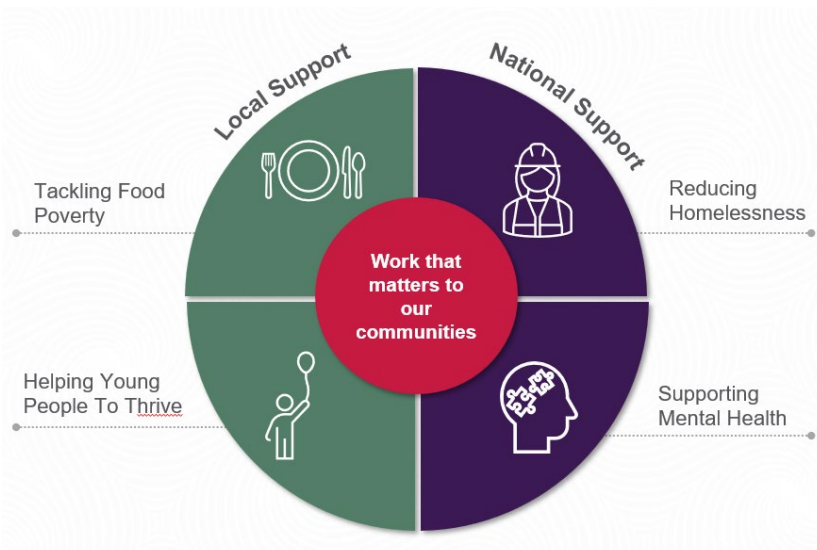
Our primary goal in supporting charities and communities is to genuinely improve the position of the causes that we support. The secondary, but equally important goal, is to engage our employees in these activities as we recognise it is good for their development and a valued part of our employee proposition. Whilst there are a large number of worthy projects and causes, we have particular focus areas to make sure that we are effective and that we support others to be the best they can be.

Our Priorities:

Across the country we are proud to help the communities in which we build to thrive. We support charities and organisations that focus on improving social mobility and place equality and diversity at the heart of what they do.

In particular, following consultation with our employees, we aim to support charities local to our sites which tackle food poverty and help young people to thrive. We know we can make a more significant difference in local communities where our employees can be actively involved, rather than solely be a funding partner. For that reason we will also actively encourage fundraising, volunteering and awareness raising with the charities we support.

We are also aware that as a large UK wide operator we can nurture longer-term strategic charity partnerships with organisations achieving a national reach. At this national level we aspire to work with charities who are working to reduce the effects of homelessness across the country, and those who actively support the importance of mental health.



Strategy for addressing our priorities:

Local charitable giving should be focused on causes geographically close to our offices, sites and the communities in which we operate.

Our contribution will not be restricted to solely monetary award. We will encourage our teams to volunteer and fundraise in support of these causes working in the communities in which we operate.

Our local businesses are actively encouraged to support a charity local to each building site and regional office which work to tackle food poverty and help young people to thrive.

Nationally we strive to supplement this support through working with our national charity partners on projects reducing homelessness and improving mental health, with many of these projects also being local to our sites and offices.

Our aspiration is that in every community where we build and operate, a locally run charity, or project of a national charity we work with centrally, is supported for the duration of our time working in that community. This will be delivered through a combination of financial donations, fundraising and volunteering, with the aim of leaving a lasting legacy in that community.

We will achieve this by:

- 1) Seeking out charities local to our sites and offices who are tackling food poverty or helping children to thrive in those local areas, and making financial donations on an annually selected basis
- 2) Supporting relevant projects of our national charity partners which are local to our sites and offices
- 3) Coordinating with schools local to our sites and businesses through Schools Outreach and other engagement programmes
- 4) Offering volunteering and fundraising opportunities to our employees to support both local and national charity partners

Exceptions to the above charitable guidelines may be made by Group approval in response to particular events or crisis where our contribution strongly supports our priorities.

No political donations of any kind are permitted.

The target for charitable giving will be set annually by the Board.

The Board of Taylor Wimpey plc will monitor the effectiveness of this Policy and will review the Policy on a regular basis and at least every two years			
Approved by:	Board of Taylor Wimpey plc	Last reviewed:	21 May 2026