

# ABOUT TAYLOR WIMPEY

TAYLORWIMPEY.CO.UK

**Taylor**  
Wimpey

*Taylor Wimpey was formed by the merger of George Wimpey and Taylor Woodrow in 2007. We have a history dating back to the 19th Century. We are one of the largest homebuilders in the UK, completing over 14,500 homes each year.*



This image shows our development in Tarvin.



*Planning sustainable communities*



*More than building homes*



*Green spaces*



*Energy efficient homes*



*We embrace diversity and inclusion in our policies and practices*



*Engaging with local people*



*“Our aim is to be the nation’s leading residential developer for creating value and delivering quality. We are passionate about working with local people, businesses, local authorities and our customers to build aspirational homes”*

For more information, visit:  
**[taylorwimpey.co.uk](https://www.taylorwimpey.co.uk)**



*Taylor Wimpey lays the foundations for thriving communities*

**14,947**

homes built  
as of November  
2019

**£455m**

invested in  
areas in which  
we built



Improvements  
to public  
transport



Landscaping,  
sports and  
play areas



# TAYLOR WIMPEY IN YOUR AREA

TAYLORWIMPEY.CO.UK

**Taylor**  
Wimpey

*We are a national company,  
working locally across the UK  
through our 23 regional offices.  
Each of our regional offices employs  
people from within its local area.*



Our Kingsbrooke Place development in Elmswell, Suffolk



## *Our address and some key facts*

Taylor Wimpey East Anglia  
Castle House  
Kempson Way  
Bury Saint Edmunds  
Suffolk  
IP32 7AR

*Number of  
affordable homes  
completed in 2020.*

**150**

*Number of staff directly  
employed including office  
personnel, site managers,  
sales executives and various  
labourers on site.*

**250**

*Employees  
on apprentice  
schemes.*

**30**

*Number of  
private homes  
completed in 2020.*

**400**



*Taylor Wimpey - a national company  
and local homebuilder*



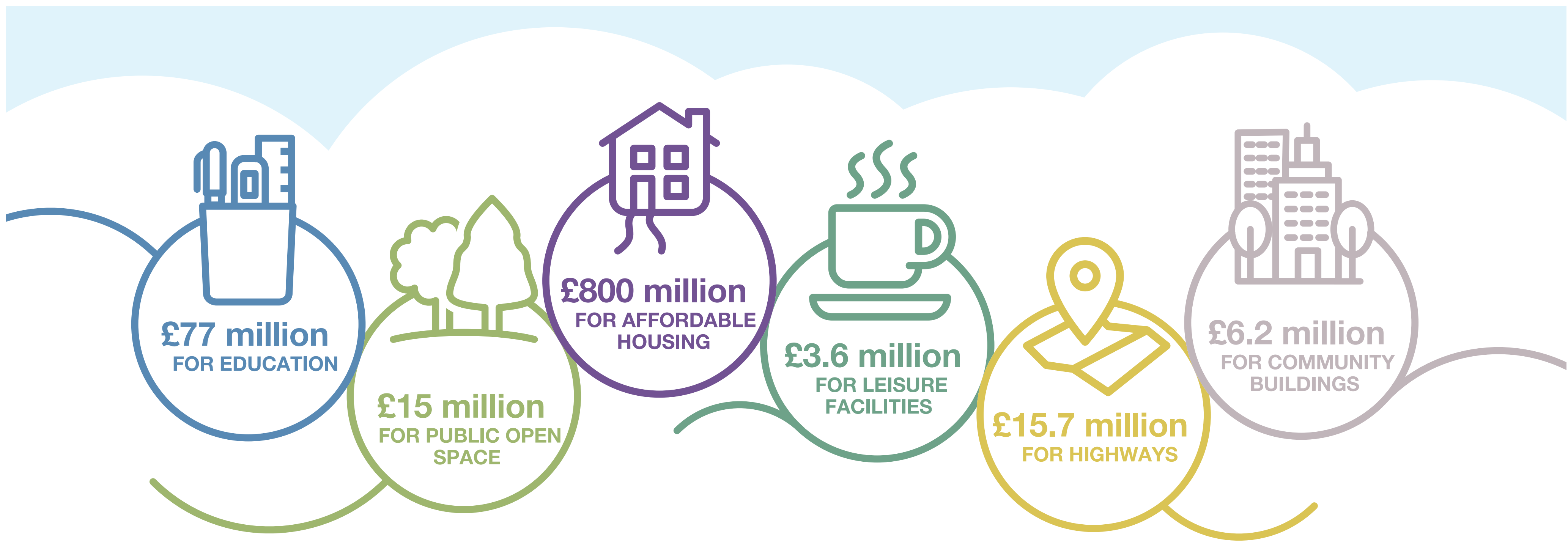
Support and  
funding for  
charities



Educate kids  
in how to  
stay safe



*We do much more than build homes. As a considerate, responsible developer, we have a commitment to local communities.*



Taylor Wimpey's total UK contributions in 2019



We donated care packages across Suffolk, Norfolk and Essex

### Care homes across the region receive vital support

As part of our efforts to support the nation's frontline workers during the Covid-19 pandemic, we donated care packages to care facilities across Suffolk, Norfolk and Essex.

Members of our team donated and safely delivered the packages, which included a range of mentally stimulating activities for residents, such as jigsaw puzzles and colouring books. The care packages also contained additional supplies of protective masks and gloves for staff.

"This kind gesture was a wonderful surprise, and a great boost for the hard working staff."



We gave book vouchers to schools in support of World Book Day

### Helping school children to read

To show our continuing support for World Book Day, we donated book vouchers to schools across East Anglia in March 2020.

World Book Day is a celebration of reading and aims to encourage children and young adults to come together to explore the pleasure of books.

"Having new books to get stuck into helps to keep up an enthusiasm for reading and we would like to thank Taylor Wimpey for their kind donation."



We donated £2,000 to the East Anglian Air Ambulance

### Donation to air ambulance PPE appeal

We donated £2,000 to the East Anglian Air Ambulance (EAAA) to help protect the crew during the Covid-19 pandemic.

The EAAA aspires to help the seriously ill or injured by dispatching highly skilled doctors and critical care paramedics by air or car.

"We feel so lucky to be part of such a supportive and generous community, who even in these difficult times, are helping to keep us flying and saving lives."



OUR VISION

TAYLORWIMPEY.CO.UK



*A new, sustainable  
community at  
Brightwell Lakes*



The Brightwell Lakes masterplan is about creating a healthy environment to live and work, set within plentiful green spaces, with new community facilities and infrastructure. Each of our phases will work towards bringing about this sustainable development, with the wellbeing of future residents at its heart.

The first phase of the masterplan will deliver 317 high-quality homes, public open space and allotments. We will also bring forward new infrastructure, including accesses, connections through the development and walking and cycling links.

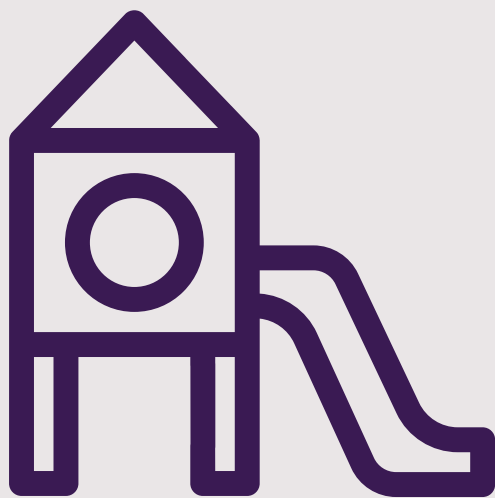
As part of our wider vision for the site, Taylor Wimpey will provide:



*2,000 new  
homes*



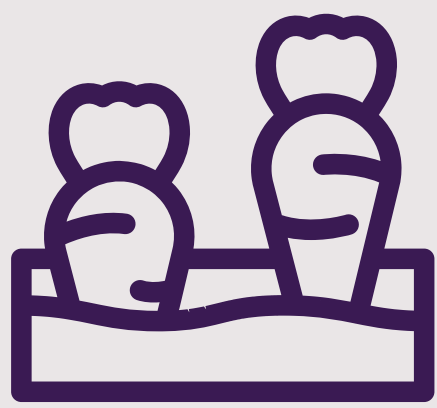
*Land and  
funding for  
a new school*



*Play areas  
for children*



*85 acres of  
open space*



*Community  
orchard and  
allotments*



*New network  
of cycle paths*



*7 km of walking  
routes*



*New community  
facilities*





# BRIGHTWELL LAKES DEVELOPMENT

TAYLORWIMPEY.CO.UK

**Taylor**  
**Wimpey**

## *The first phase of our plans for Brightwell Lakes, Martlesham*

An outline planning permission was approved in April 2018 by Suffolk Coastal District Council for a sustainable, 2,000-home community in Martlesham.

Taylor Wimpey has since purchased the site and is beginning to bring forward their vision for what this location can offer.

We are now preparing to submit to East Suffolk Council a reserved matters planning applications to deliver the first phases of Brightwell Lakes. The applications will provide details concerning the layout of the homes and further information about new infrastructure, roads, footways and cycle connections

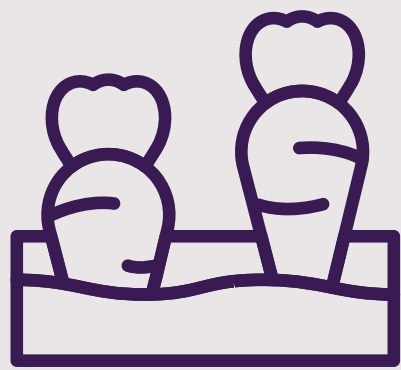
We are keen to engage with the local community to gather feedback on our plans for Brightwell Lakes and encourage you to provide us with your comments and thoughts.



## *Key Facts*



*317 new homes*



*Allotments for residents*



*Road access to the A12*



*Cycling and pedestrian links*



# FIRST PHASE PROPOSALS

TAYLORWIMPEY.CO.UK

**Taylor**  
**Wimpey**

## *The first steps towards a new community in Martlesham*

In the first phase of the development we are proposing to build 317 high-quality homes. This will include 195 homes on the A12 parcel and 122 homes on the Ipswich Road parcel. Please refer to the map on the previous page to see where development is taking place.

Homes will vary from 1-bed apartments to 5-bed houses to accommodate every need, and 35% will be affordable. To create a unique sense of identity throughout Brightwell Lakes we will create different character areas in each parcel of development.

As part of the first phase of development we will be bringing forward the vital infrastructure required to support the development. Most importantly we will build new accesses to the site along the A12 and Ipswich Road.

In order to ensure that the development is sustainable we will be providing extensive cycling and pedestrian links throughout the site.

The first community facilities will also be coming forward as part of this phase. We will also provide a new area of open space within the development parcels and allotments on the A12 parcel.





## *A future-proof development that protects and enhances the natural environment*



As part of our 'Building a Better World' initiative, we are committed to creating a greener, healthier future for our customers, colleagues and communities with a series of new targets.

The strategy focuses on key environmental impacts for the business; climate change; nature; and resources and waste, with specific commitments to:

*Increase  
nature  
on new  
developments*

*Achieve  
science-based  
carbon  
reduction  
target*

*Make it easier  
for customers  
to live a more  
sustainable  
lifestyle*

This is reflected in our plans for Brightwell Lakes; a development which will consider its environmental impact.

We will ensure that new homes are energy efficient and help to conserve water, with sustainable drainage features also included throughout the development.

Through our partnerships with Buglife and Hedgehog Street, we aim to enhance biodiversity and create opportunities for residents to engage with nature.

Specific measures will include hedgehog highways, bug hotels, bat boxes, bird boxes, bee bricks and wildlife ponds.





## NEXT STEPS

TAYLORWIMPEY.CO.UK

**Taylor**  
Wimpey

*Your views are very important to help us shape and develop the proposed scheme.*

Once you have had an opportunity to look at our proposals for the first phases of development, we would encourage you to provide us your feedback on the plans.

Following consideration and detailed review of the feedback that we receive, we will be submitting Reserved Matters planning applications to East Suffolk Council later this year.

As part of this process, there will be a three-week consultation period where the council will offer neighbours and residents a further opportunity to comment on the proposals.

**You can email your comments to:**  
**[kbrown@conciliocomms.com](mailto:kbrown@conciliocomms.com)**

**Alternatively, you can write to us:**  
Brightwell Lakes Phase 1 Consultation  
Taylor Wimpey East Anglia  
Castle House  
Kempson Way  
Bury Saint Edmunds  
Suffolk, IP32 7AR

Please send us your thoughts by midnight on Friday 23rd July.



*Thank you for taking part in our consultation. Your views make a real difference.*

