

Taylor  
Wimpey

# PINE TREES

---

HIGH WYCOMBE | BUCKINGHAMSHIRE







This computer generated image is for illustrative purposes only. Its purpose is to give a feel for the development, not an accurate description of each property. Please enquire for further details.

## PINE TREES. A VERY SPECIAL PLACE TO BE

---

*A warm welcome to Pine Trees.*

*Here you'll find an exciting collection of three, four and  
five bedroom homes built on a former RAF airfield,  
nestled on the southern edge of High Wycombe.*

*It's a special place to live, work and enjoy life.*



# MAKE YOURSELF AT HOME

---

*From the first time you open the front door, you know this is somewhere you can call home.*

*Bright, open rooms, finished to the highest possible standard... and ever so thoughtfully laid out. It's energy efficient too, of course - and up to all modern building standards. Naturally, your new home also comes complete with the very latest fixtures and fittings.*

*We've even decorated in neutral colours so you can stamp your personality on it from Day 1.*

*So, come on in... and make yourself at home.*



This image shows a typical Taylor Wimpey home and may include optional upgrades at an additional cost.



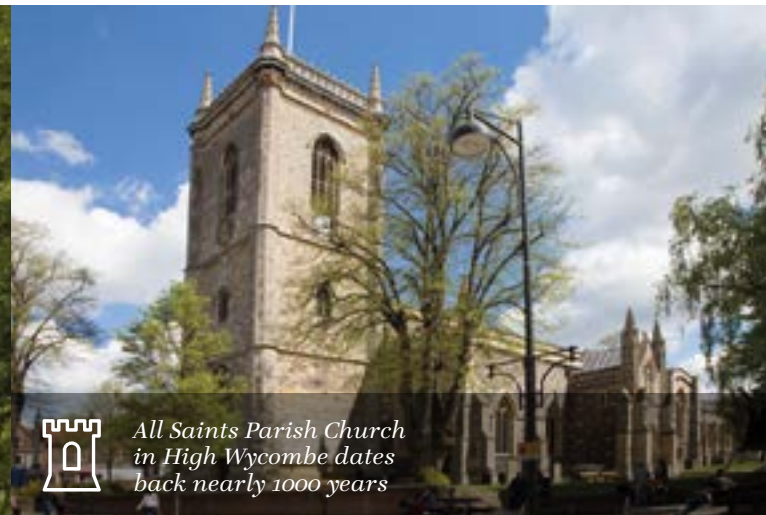


## LIVE AND LOVE TOWN LIFE

*Do you love the countryside? Nestled on the southern edge of High Wycombe, Pine Trees is designed to complement the mature treescape of this site built on a former RAF airfield.*

*Surrounded by the rolling hills of the Chilterns, High Wycombe caters to all your 21st century needs with an excellent range of retail areas, restaurants and supermarkets. If you're after something a little different, the high street is also home to a local market. Everything you need for modern living.*

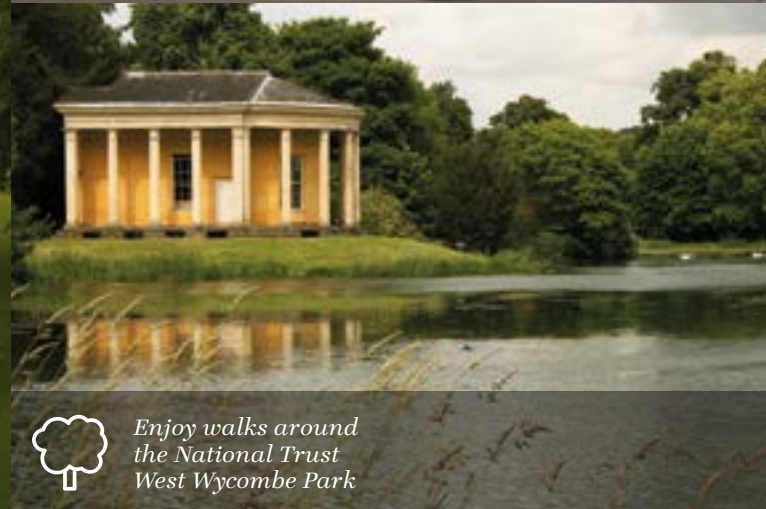
Times taken from nationalrail.co.uk. Distances taken from googlemaps.co.uk.



*All Saints Parish Church in High Wycombe dates back nearly 1000 years*



*The thriving high street is home to a range of shops, restaurants and local market*



*Enjoy walks around the National Trust West Wycombe Park*

## THE PERFECT PLACE TO BE

*Of course, home life is only part of the story and you'll need fantastic transport links to the City and other parts of the country. With the M40 just 1.6 miles away, you can reach Heathrow Airport in 21 miles, or be in the City of London within an hour and a half. Meanwhile, High Wycombe station is less than 1.5 miles away where you can catch a train to London and reach Marylebone in under 40 minutes.*

### TRAVELLING BY CAR



Maps shown are not to scale. Times, distances and directions are approximate only and are taken from google.co.uk/maps and nationalrail.com



*National Trust Clivedon is perfect for family walks at the weekend*



*St Michael's and All Angels Church is surrounded by beautiful green space*



*Take a trip to Eden Shopping Centre for all your favourite shops*





## WHY BUY NEW?



*No buying chain means less stress and hassle*



*Save money on your household bills from Day 1*



*Start with a blank canvas and create your home your way*



*Become part of a new and growing community*



*Enjoy real peace of mind, with our two-year warranty*



*Live in a high specification home built to suit modern lifestyles*



## WE'RE WITH YOU EVERY STEP OF THE WAY

*Everyone knows buying a new home is an exciting time. But it can be a stressful one too, which is why our sales executives and customer relations managers are there to help every step of the way, from your initial enquiry right through to opening the front door of your new home for the first time.*

HERE TO HELP  
YOU BUY



Backed by  
HM Government

*Help to Buy means you can make the move to your first home - or move to a new one - with a deposit of just 5%.*

HERE TO HELP  
YOU SELL



### PART EXCHANGE

*Struggling to sell your current home? Our Part Exchange plan means we could buy your home off you.*



### EASYMOVER

*or easymover could help remove some of the stress if you need to sell your existing house.*

*To find out more, just give us a call, pop in for a chat, or pay us a visit at [taylorwimpey.co.uk](http://taylorwimpey.co.uk) and view our handy Homebuyer Guides.*

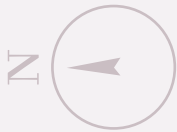


Get to know

# PINE TREES

HIGH WYCOMBE | BUCKINGHAMSHIRE

*Pine Trees is an exciting collection of three, four and five bedroom homes nestled on the southern edge of High Wycombe.*



## 5 bedroom homes

- **The Blackthorn**  
5 bedroom home  
**Plot: 51**
- **The Elder**  
5 bedroom home  
**Plot: 22**

## 4 bedroom homes

- **The Lavender**  
4 bedroom home  
**Plot: 6 & 7**
- **The Laurel**  
4 bedroom home  
**Plot: 13**
- **The Barberry**  
4 bedroom home  
**Plot: 1**
- **The Jasmine**  
4 bedroom home  
**Plot: 2, 3, 10, 11 & 12**
- **The Cherry**  
4 bedroom home  
**Plot: 4, 5, 8 & 9**

## 3 bedroom homes

- **The Daffne**  
3 bedroom home  
**Plot: 55**
- **The Cedar**  
3 bedroom home  
**Plot: 54**
- **The Alpine**  
3 bedroom home  
**Plots: 49\***
- **The Primrose**  
3 bedroom home  
**Plots: 50\***
- **3 bedroom home**  
**Plots: 37\*, 39\* & 47\***
- **3 bedroom home**  
**Plots: 38\*, 40\* & 48\***

## 2 bedroom apartments

- **2 bedroom apartments**  
**Plots: 28\*, 29\*, 30\*, 31\*, 32\*, 33\*, 34\*, 35\* & 36\***



-  = Rented
-  = Shared Ownership
-  = Bin Store
-  = Cycle Storage Area
-  = Garage Access
-  = Visitor Parking Place

The Development Layout does not show details of gradients of land, boundary treatments, local authority street lighting or landscaping. It is our intention to build in accordance with this layout. However, there may be occasions when the house designs, boundaries, landscaping and positions of roads and footpaths change as the development proceeds. Please check the details of your chosen property with your sales executive prior to reservation. 37121/ June 2019.





Taylor Wimpey

# THE ASPEN

4 bedroom home

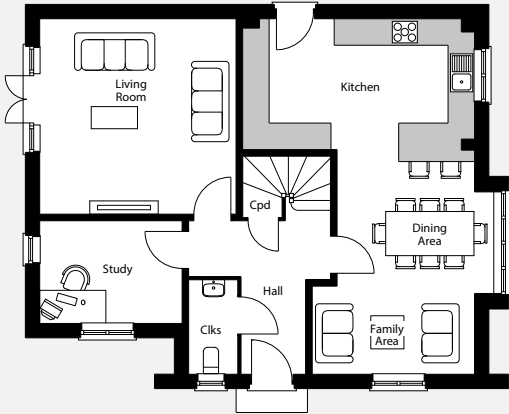
Images may include optional upgrades at additional cost. This image is from an imaginary viewpoint within an open space area. Its purpose is to give a feel for the development, not an accurate description of each property. The illustration shows a typical Taylor Wimpey home of this type, but there are, however, variances from site to site. External materials, finishes, landscaping and the position of garages, (where provided) may vary throughout the development. Properties may also be built handed (mirror image). Please ask for further details.

# THE ASPEN

A 4 bedroom home designed with families in mind. The open-plan kitchen/dining/family area is perfect for family living. A living room with access to the garden and a private study complete the ground floor. On the first floor, you'll find a family bathroom, two bedrooms and the master bedroom with dressing area and en suite bathroom. A further bedroom, with an en suite shower room, is on the top floor.

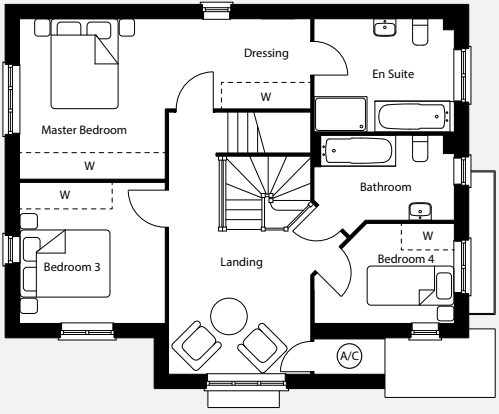
TOTAL 185 sq. m. / 1,991 sq. ft.

Ground floor



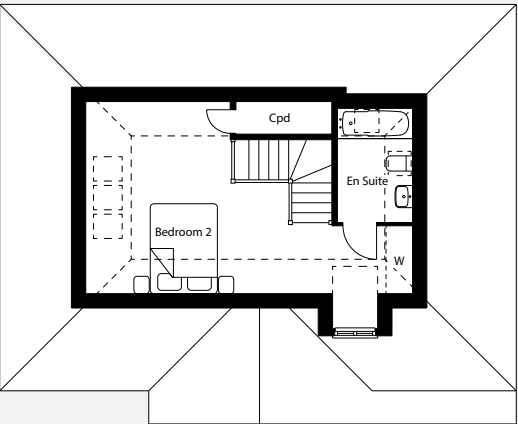
Kitchen/ Dining/Family Area	8.05m × 5.25m max	26'7" × 17'7" max
Living Room	4.44m × 4.42m max	14'7" × 14'6" max
Study	3.22m × 2.32m max	10'7" × 7'8" max

First floor



Master Bedroom	7.40m × 4.34m max	24'3" × 14'3" max
Bedroom 3	3.30m × 3.19m max	10'10" × 10'6" max
Bedroom 4	3.18m × 2.26m max	10'5" × 7'5" max

Second floor



Bedroom 2	6.59m × 4.33m max	21'8" × 14'3" max
-----------	-------------------	-------------------

Key  
Clks – Cloakroom   Cpd – Cupboard   - - - - Restricted Headroom   [ ] – Roof Window   W – Wardrobe Space

Plot: 14

The floor plans depict a typical layout of this house type. For exact plot specification, details of external and internal finishes, dimensions and floor plan differences consult your sales executive. All dimensions are + or – 50mm and floor plans are not shown to scale. The kitchen layout and furniture positions are for indicative purposes only. 37155 / January 2020.

Want to view one of our gorgeous new show homes?  
Find a development and book an online appointment at:

[taylorwimpey.co.uk](https://www.taylorwimpey.co.uk)

Taylor Wimpey





Taylor Wimpey

# THE BARBERRY

4 bedroom home

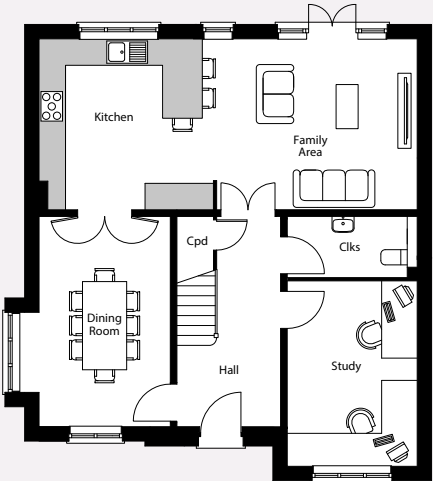
Images may include optional upgrades at additional cost. This image is from an imaginary viewpoint within an open space area. Its purpose is to give a feel for the development, not an accurate description of each property. The illustration shows a typical Taylor Wimpey home of this type, but there are, however, variances from site to site. External materials, finishes, landscaping and the position of garages, (where provided) may vary throughout the development. Properties may also be built handed (mirror image). Please ask for further details.

# THE BARBERRY

A 4 bedroom home perfect for family life, the open-plan kitchen/family area is the ideal space for hosting guests. A separate dining room and a private study complete the ground floor. On the first floor is the master bedroom with dressing area and en suite shower room, along with two further double bedrooms, one with an en suite shower room, a single bedroom and a family bathroom.

TOTAL 192.8 sq. m. / 1,687 sq. ft.

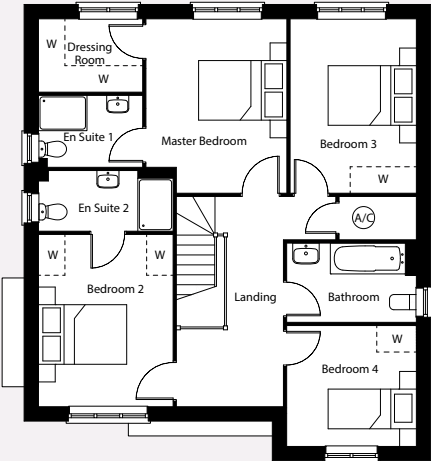
Ground floor



Kitchen/ Family Area	8.56m x 3.87m max	28'1" x 12'8" max
Dining Room	4.76m x 3.41m max	15'8" x 11'8" max
Study	4.20m x 2.94m max	13'10" x 9'8" max

- Key
- A/C – Airing Cupboard
  - Clks – Cloakroom
  - Cpd – Cupboard
  - W – Wardrobe Space

First floor



Master Bedroom	3.95m x 3.19m max	13'0" x 10'6" max
Bedroom 2	3.90m x 3.05m max	12'0" x 10'0" max
Bedroom 3	3.95m x 2.86m max	13'0" x 9'5" max
Bedroom 4	2.94m x 2.74m max	9'8" x 9'0" max

Plot: 1

The floor plans depict a typical layout of this house type. For exact plot specification, details of external and internal finishes, dimensions and floor plan differences consult your sales executive. All dimensions are + or – 50mm and floor plans are not shown to scale. The kitchen layout and furniture positions are for indicative purposes only. 37155 / January 2020.

Want to view one of our gorgeous new show homes?  
Find a development and book an online appointment at:

[taylorwimpey.co.uk](https://www.taylorwimpey.co.uk)







Taylor Wimpey

# THE BLACKTHORN

5 bedroom home

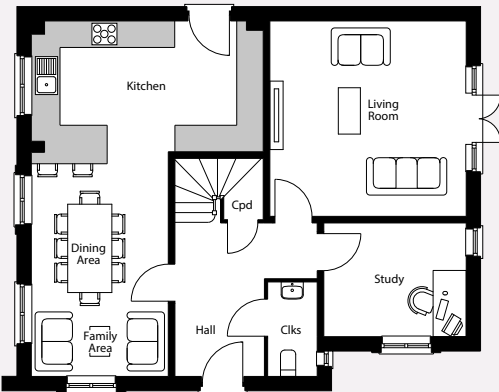
Images may include optional upgrades at additional cost. This image is from an imaginary viewpoint within an open space area. Its purpose is to give a feel for the development, not an accurate description of each property. The illustration shows a typical Taylor Wimpey home of this type, but there are, however, variances from site to site. External materials, finishes, landscaping and the position of garages, (where provided) may vary throughout the development. Properties may also be built handed (mirror image). Please ask for further details.

# THE BLACKTHORN

A 5 bedroom home ideal for growing families in search of extra space. The entrance hall leads to the kitchen/dining/family area with access to the garden, the living room and the private study. The first floor features the master bedroom with dressing area and en suite shower room, another double bedroom, a further single bedroom and the family bathroom. Two more double bedrooms, one with an en suite shower room, are located on the top floor.

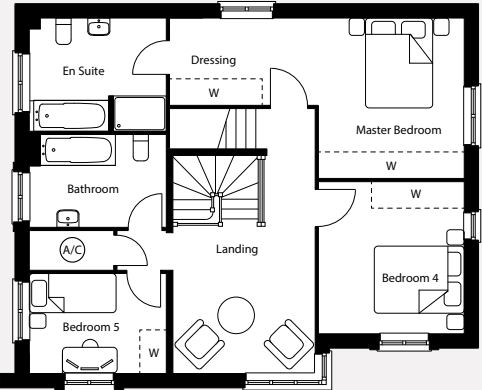
TOTAL 208.2 sq. m. / 2,241 sq. ft.

Ground floor



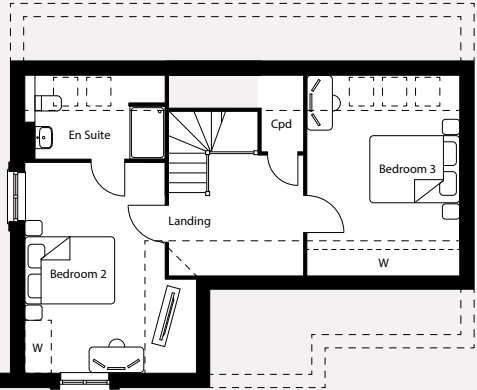
Kitchen/Dining/Family Area	8.05m x 5.25m max	26'4" x 17'3" max
Living Room	4.44m x 4.42m max	14'7" x 14'6" max
Study	3.21m x 2.57m max	10'7" x 8'5" max

First floor



Master Bedroom	6.67m x 3.63m max	21'11" x 11'9" max
Bedroom 4	3.44m x 3.30m max	11'4" x 10'10" max
Bedroom 5	3.10m x 2.26m max	10'2" x 7'5" max

Second floor



Bedroom 2	4.77m x 3.88m max	15'8" x 12'9" max
Bedroom 3	4.54m x 3.48m max	14'11" x 11'5" max

Key  
Clks – Cloakroom Cpd – Cupboard - - - Restricted Headroom [ ] – Roof Window W – Wardrobe Space

Plot: 51

The floor plans depict a typical layout of this house type. For exact plot specification, details of external and internal finishes, dimensions and floor plan differences consult your sales executive. All dimensions are + or – 50mm and floor plans are not shown to scale. The kitchen layout and furniture positions are for indicative purposes only. 37155 / January 2020.

Want to view one of our gorgeous new show homes?  
Find a development and book an online appointment at:

[taylorwimpey.co.uk](https://www.taylorwimpey.co.uk)

Taylor Wimpey





Taylor Wimpey

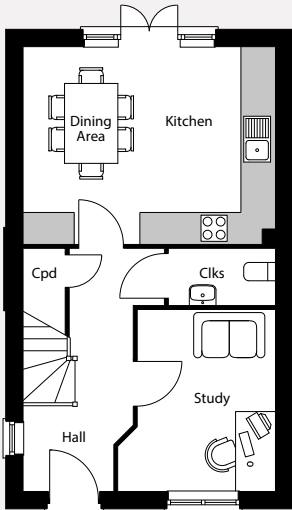
# THE CEDAR

3 bedroom home

A 3 storey, 3 bedroom home with plenty of character. The front door opens onto an entrance hallway, located off of which are the study and the full-width kitchen/dining area with double doors to the garden. Upstairs, is a separate living room, the family bathroom and the master bedroom. The second floor is home to two further bedrooms and a shower room.

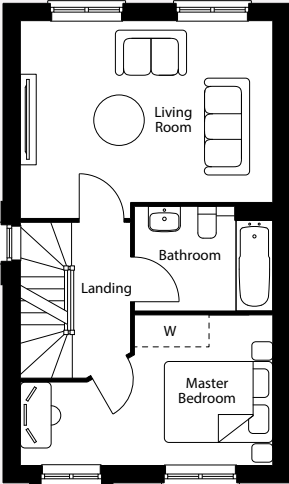
TOTAL 110.6 sq. m. / 1,190 sq. ft.

Ground floor



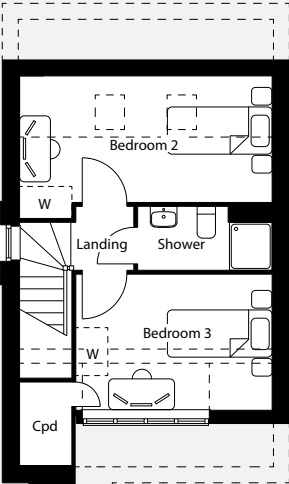
Kitchen/Dining Area	4.74m x 3.71m max	15'7" x 12'2" max
Study	3.41m x 2.96m max	11'3" x 9'9" max

First floor



Living Room	4.74m x 3.41m max	15'7" x 11'2" max
Master Bedroom	4.74m x 2.82m max	15'7" x 9'3" max

Second floor



Bedroom 2	4.74m x 2.39m max	15'7" x 7'10" max
Bedroom 3	3.68m x 2.54m max	12'1" x 8'4" max

Key  
A/C – Airing Cupboard Clks – Cloakroom Cpd – Cupboard - - - Restricted Headroom [ ] – Roof Window W – Wardrobe Space

Plot: 54

The floor plans depict a typical layout of this house type. For exact plot specification, details of external and internal finishes, dimensions and floor plan differences consult your sales executive. All dimensions are + or – 50mm and floor plans are not shown to scale. The kitchen layout and furniture positions are for indicative purposes only. 37155 / January 2020.

Want to view one of our gorgeous new show homes?  
Find a development and book an online appointment at:

[taylorwimpey.co.uk](https://www.taylorwimpey.co.uk)

Taylor Wimpey

Images may include optional upgrades at additional cost. This image is from an imaginary viewpoint within an open space area. Its purpose is to give a feel for the development, not an accurate description of each property. The illustration shows a typical Taylor Wimpey home of this type, but there are, however, variances from site to site. External materials, finishes, landscaping and the position of garages, (where provided) may vary throughout the development. Properties may also be built handed (mirror image). Please ask for further details.





Taylor Wimpey

# THE CHERRY

4 bedroom home

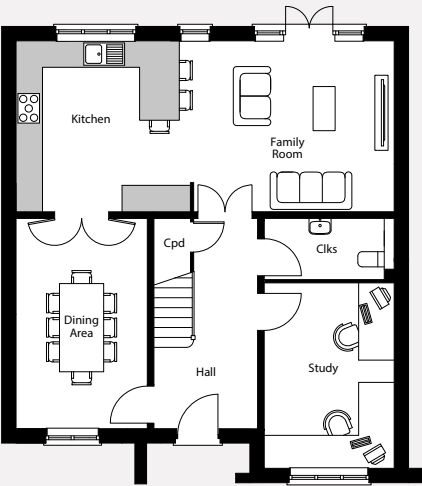
Images may include optional upgrades at additional cost. This image is from an imaginary viewpoint within an open space area. Its purpose is to give a feel for the development, not an accurate description of each property. The illustration shows a typical Taylor Wimpey home of this type, but there are, however, variances from site to site. External materials, finishes, landscaping and the position of garages, (where provided) may vary throughout the development. Properties may also be built handed (mirror image). Please ask for further details.

# THE CHERRY

A 4 bedroom house with a mix of open-plan and formal living spaces which has been carefully composed for contemporary living. A flowing kitchen/family area, a separate dining room and a study make up the ground floor. The master bedroom features an en suite shower room. A further two double bedrooms, a flexible single bedroom and a family bathroom complete the layout.

TOTAL 157.7 sq. m. / 1,697 sq. ft.

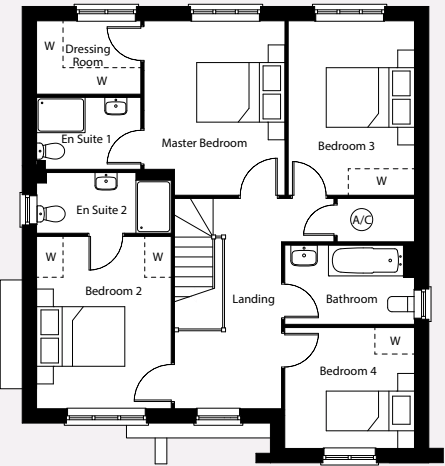
Ground floor



Kitchen/Family Area	8.56m x 3.87m max	28'1" x 12'8" max
Dining Room	4.76m x 2.97m max	15'8" x 9'9" max
Study	4.20m x 2.94m max	13'10" x 9'8" max

Key  
A/C – Airing Cupboard Clks – Cloakroom  
Cpd – Cupboard W – Wardrobe Space

First floor



Master Bedroom	3.95m x 3.19m max	13'0" x 10'6" max
Bedroom 2	3.90m x 3.05m max	12'10" x 10'0" max
Bedroom 3	3.95m x 2.86m max	13'0" x 9'5" max
Bedroom 4	2.94m x 2.74m max	9'8" x 9'0" max

Plots: 4\*, 5, 8\* & 9

The floor plans depict a typical layout of this house type. For exact plot specification, details of external and internal finishes, dimensions and floor plan differences consult your sales executive. All dimensions are + or – 50mm and floor plans are not shown to scale. The kitchen layout and furniture positions are for indicative purposes only. \*Plots are handed. Floorplan is handed to the CGI. 37155 / January 2020.

Want to view one of our gorgeous new show homes?  
Find a development and book an online appointment at:

[taylorwimpey.co.uk](https://www.taylorwimpey.co.uk)







Taylor Wimpey

# THE DAFFNE

3 bedroom home

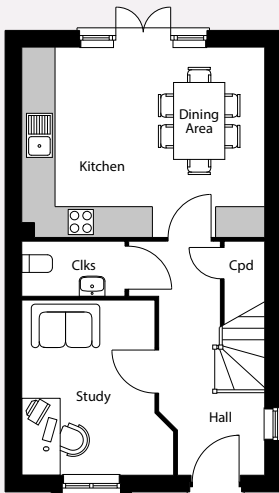
Images may include optional upgrades at additional cost. This image is from an imaginary viewpoint within an open space area. Its purpose is to give a feel for the development, not an accurate description of each property. The illustration shows a typical Taylor Wimpey home of this type, but there are, however, variances from site to site. External materials, finishes, landscaping and the position of garages, (where provided) may vary throughout the development. Properties may also be built handed (mirror image). Please ask for further details.

# THE DAFFNE

A versatile 3 storey, 3 bedroom, The Daffne has a private study and the full-width kitchen/dining area with double doors to the garden on the ground floor. Upstairs, you'll find the master bedroom, family bathroom and a separate living room. The second floor has two further bedrooms and a shower room.

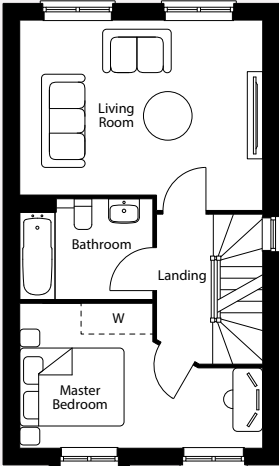
TOTAL 110.6 sq. m. / 1,190 sq. ft.

Ground floor



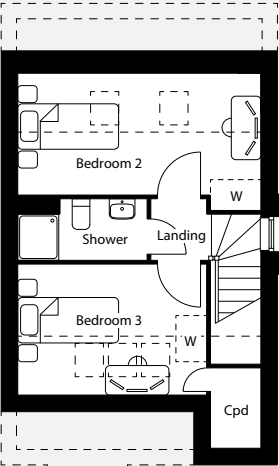
Kitchen/Dining Area	4.74m x 3.71m max	15'7" x 12'2" max
Study	3.41m x 2.96m max	11'3" x 9'9" max

First floor



Living Room	4.74m x 3.41m max	15'7" x 11'2" max
Master Bedroom	4.74m x 2.82m max	15'7" x 9'3" max

Second floor



Bedroom 2	4.74m x 2.39m	15'7" x 7'10" max
Bedroom 3	3.68m x 2.27m	12'1" x 7'5" max

Key  
A/C – Airing Cupboard Clks – Cloakroom Cpd – Cupboard - - - Restricted Headroom [ ] – Roof Window W – Wardrobe Space

**Plot: 55**  
The floor plans depict a typical layout of this house type. For exact plot specification, details of external and internal finishes, dimensions and floor plan differences consult your sales executive. All dimensions are + or – 50mm and floor plans are not shown to scale. The kitchen layout and furniture positions are for indicative purposes only. 37155 / January 2020.

Want to view one of our gorgeous new show homes?  
Find a development and book an online appointment at:

[taylorwimpey.co.uk](https://www.taylorwimpey.co.uk)







Taylor Wimpey

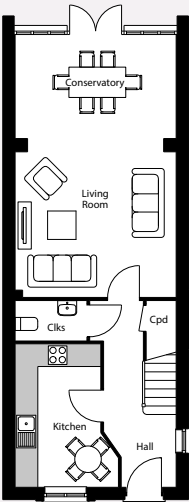
THE DALE A

4 bedroom home

The Dale A is a 4 bedroom home, which has been carefully designed throughout to maximise space making it perfect for growing families. The stylish kitchen is an area where one can cook, dine and relax. At the end of the hall is the open-plan living room/conservatory, great for entertaining. The conservatory has double doors opening to the garden. The first floor has three bedrooms and a family bathroom. Whilst the master bedroom with a dressing area and en suite shower room spans the entire second floor.

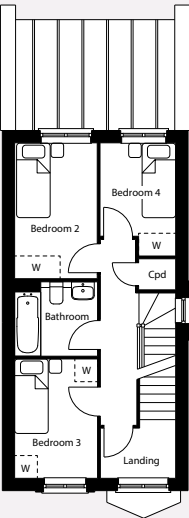
TOTAL 114.4 sq. m. / 1,231 sq. ft.

Ground floor



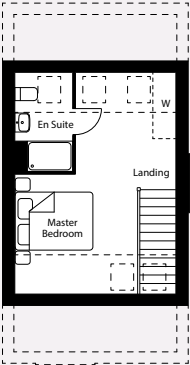
Kitchen	3.78m x 2.72m max	12'5" x 8'11" max
Living Room/Conservatory	6.93m x 4.25m max	22'9" x 13'11" max

First floor



Bedroom 2	3.58m x 2.17m max	11'9" x 7'2" max
Bedroom 3	3.14m x 2.18m max	10'4" x 7'2" max
Bedroom 4	2.98m x 1.99m max	9'10" x 6'7" max

Second floor



Master Bedroom	5.58m x 4.25m max	18'4" x 13'11" max
----------------	-------------------	--------------------

Key

A/C – Airing Cupboard Clks – Cloakroom Cpd – Cupboard - - - Restricted Headroom [ ] – Roof Window W – Wardrobe Space

Plot: 53

The floor plans depict a typical layout of this house type. For exact plot specification, details of external and internal finishes, dimensions and floor plan differences consult your sales executive. All dimensions are + or – 50mm and floor plans are not shown to scale. The kitchen layout and furniture positions are for indicative purposes only. 37155 / January 2020.

Want to view one of our gorgeous new show homes?  
Find a development and book an online appointment at:

[taylorwimpey.co.uk](https://www.taylorwimpey.co.uk)

Taylor Wimpey

Images may include optional upgrades at additional cost. This image is from an imaginary viewpoint within an open space area. Its purpose is to give a feel for the development, not an accurate description of each property. The illustration shows a typical Taylor Wimpey home of this type, but there are, however, variances from site to site. External materials, finishes, landscaping and the position of garages, (where provided) may vary throughout the development. Properties may also be built handed (mirror image). Please ask for further details.





Taylor Wimpey

# THE DALE B

4 bedroom home

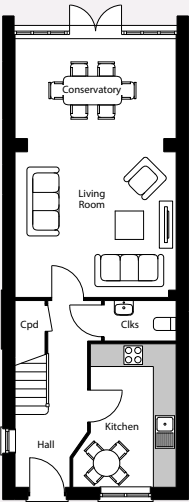
Images may include optional upgrades at additional cost. This image is from an imaginary viewpoint within an open space area. Its purpose is to give a feel for the development, not an accurate description of each property. The illustration shows a typical Taylor Wimpey home of this type, but there are, however, variances from site to site. External materials, finishes, landscaping and the position of garages, (where provided) may vary throughout the development. Properties may also be built handed (mirror image). Please ask for further details.

# THE DALE B

The Dale B is a 4 bedroom home, which has been carefully designed throughout to maximise space making it perfect for growing families. The stylish kitchen is an area where one can cook, dine and relax. At the end of the hall is the open-plan living room/conservatory, great for entertaining. The conservatory has double doors opening to the garden. The first floor has three bedrooms and a family bathroom. Whilst the master bedroom with a dressing area and en suite shower room spans the entire second floor.

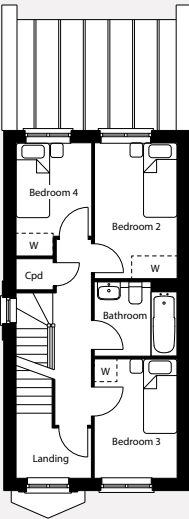
TOTAL 114.4 sq. m. / 1,231 sq. ft.

Ground floor



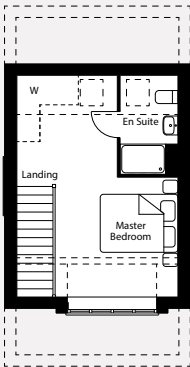
Kitchen	3.78m x 2.72m max	12'5" x 8'11" max
Living Room/Conservatory	6.93m x 4.25m max	22'9" x 13'11" max

First floor



Bedroom 2	3.58m x 2.17m max	11'9" x 7'2" max
Bedroom 3	3.14m x 2.18m max	10'4" x 7'2" max
Bedroom 4	2.98m x 1.99m max	9'10" x 6'7" max

Second floor



Master Bedroom	5.58m x 4.25m max	18'4" x 13'11" max
----------------	-------------------	--------------------

Key  
Ckls – Cloakroom   Cpd – Cupboard   - - - - Restricted Headroom   [ ] – Roof Window   W – Wardrobe Space

Plot: 52

The floor plans depict a typical layout of this house type. For exact plot specification, details of external and internal finishes, dimensions and floor plan differences consult your sales executive. All dimensions are + or – 50mm and floor plans are not shown to scale. The kitchen layout and furniture positions are for indicative purposes only. 37155 / January 2020.

Want to view one of our gorgeous new show homes?  
Find a development and book an online appointment at:

[taylorwimpey.co.uk](https://www.taylorwimpey.co.uk)

Taylor Wimpey





Taylor Wimpey

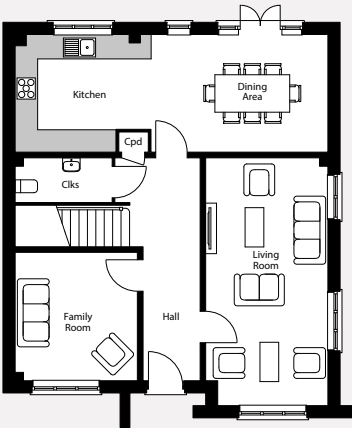
# THE ELDER

5 bedroom home

The Elder is a stunning 5 bedroom home perfectly suited to growing families with a busy lifestyle. An open-plan kitchen/dining area spans the width of the home, with double doors leading to the garden. There are also separate living and family rooms on the ground floor. 3 double bedrooms, one with an en suite shower room, a flexible single bedroom and the family bathroom are on the first floor. The top floor houses the master bedroom with an en suite shower room - providing a private space in which to unwind.

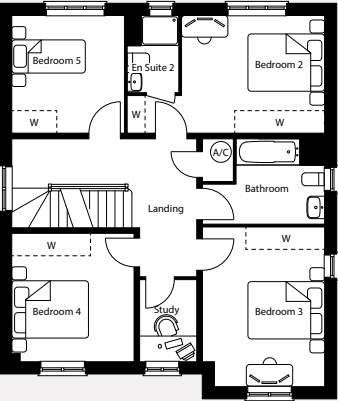
TOTAL 220.9 sq. m. / 2,377 sq. ft.

Ground floor



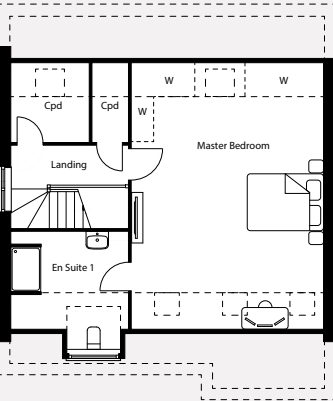
Study	3.42m x 3.26m max	11'3" x 10'8" max
Living Room	6.61m x 3.26m max	21'8" x 10'8" max
Kitchen/Dining Area	8.35m x 3.14m max	27'4" x 10'4" max

First floor



Bedroom 2	5.26m x 3.14m max	17'3" x 10'4" max
Bedroom 3	4.26m x 3.26m max	14'0" x 10'8" max
Bedroom 4	3.42m x 3.26m max	11'3" x 10'8" max
Bedroom 5	3.14m x 3.00m max	10'4" x 9'10" max

Second floor



Master Bedroom	6.52m x 5.13m max	21'5" x 16'10" max
----------------	-------------------	--------------------

Key  
A/C – Airing Cupboard Clks – Cloakroom Cpd – Cupboard - - - Restricted Headroom [ ] – Roof Window W – Wardrobe Space

Plot: 22

The floor plans depict a typical layout of this house type. For exact plot specification, details of external and internal finishes, dimensions and floor plan differences consult your sales executive. All dimensions are + or – 50mm and floor plans are not shown to scale. The kitchen layout and furniture positions are for indicative purposes only. 37155 / January 2020.

Want to view one of our gorgeous new show homes?  
Find a development and book an online appointment at:

[taylorwimpey.co.uk](https://www.taylorwimpey.co.uk)

Taylor Wimpey

Images may include optional upgrades at additional cost. This image is from an imaginary viewpoint within an open space area. Its purpose is to give a feel for the development, not an accurate description of each property. The illustration shows a typical Taylor Wimpey home of this type, but there are, however, variances from site to site. External materials, finishes, landscaping and the position of garages, (where provided) may vary throughout the development. Properties may also be built handed (mirror image). Please ask for further details.





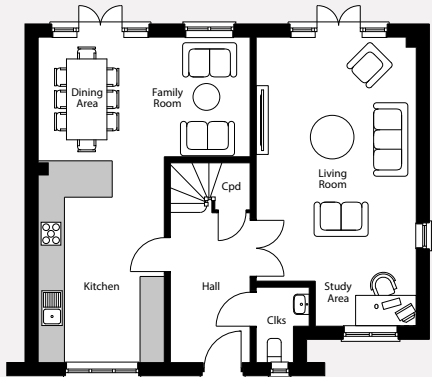
Images may include optional upgrades at additional cost. This image is from an imaginary viewpoint within an open space area. Its purpose is to give a feel for the development, not an accurate description of each property. The illustration shows a typical Taylor Wimpey home of this type, but there are, however, variances from site to site. External materials, finishes, landscaping and the position of garages, (where provided) may vary throughout the development. Properties may also be built handed (mirror image). Please ask for further details.

# THE EMERALD

The Emerald is a complete 4 bedroom home ideal for growing families. An open-plan kitchen/dining/family area spans the length of the home, with access to the garden. There is also a separate living room, with study area off the hallway. The master bedroom has a dressing area and an en suite shower room is located on the first floor along with two flexible single bedrooms and the family bathroom. A second double bedroom, complete with en suite shower room, is on the second floor.

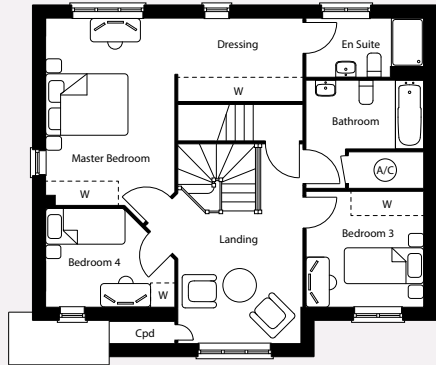
TOTAL 175.9 sq. m. / 1,893 sq. ft.

Ground floor



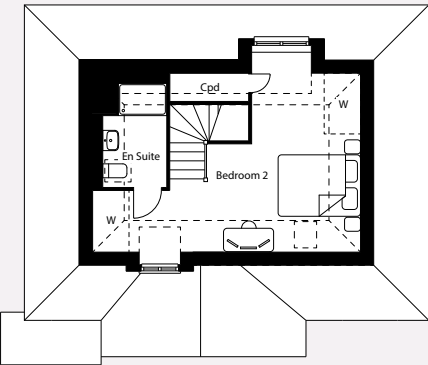
Kitchen/Dining/Family Area	8.05m x 5.24m max	27'7" x 17'2" max
Living Room/Study Area	7.15m x 3.96m max	23'5" x 13'0" max

First floor



Master Bedroom	6.29m x 4.63m max	20'8" x 15'2" max
Bedroom 3	2.91m x 2.86m max	9'7" x 9'5" max
Bedroom 4	3.19m x 2.44m max	10'6" x 8'0" max

Second floor



Bedroom 2	6.62m x 4.94m max	21'9" x 16'3" max
-----------	-------------------	-------------------

Key  
A/C – Airing Cupboard Clks – Cloakroom Cpd – Cupboard - - - - Restricted Headroom [ ] – Roof Window W – Wardrobe Space

Plot: 23

The floor plans depict a typical layout of this house type. For exact plot specification, details of external and internal finishes, dimensions and floor plan differences consult your sales executive. All dimensions are + or – 50mm and floor plans are not shown to scale. The kitchen layout and furniture positions are for indicative purposes only. 37155 / January 2020.

Want to view one of our gorgeous new show homes?  
Find a development and book an online appointment at:

[taylorwimpey.co.uk](https://www.taylorwimpey.co.uk)

Taylor Wimpey





THE HEATH

This 4 bedroom home benefits from a living room with double doors to the garden, a kitchen/dining area and a private study on the ground floor. On the first floor are four bedrooms. The master has its own en suite shower room, whilst the remaining bedrooms are serviced by the family bathroom.

TOTAL 125.4 sq. m. / 1,350 sq. ft.

Ground floor



Kitchen/Dining Area	6.12m x 3.20m max	19'4" x 10'6" max
Living Room	4.34m x 3.97 max	14'3" x 13'0" max
Study	2.90m x 2.25m max	9'6" x 7'5" max

First floor



Master Bedroom	3.76m x 3.51m max	12'4" x 11'6" max
Bedroom 2	3.76m x 3.44m max	12'4" x 11'4" max
Bedroom 3	2.77m x 2.56m max	9'1" x 5'5" max
Bedroom 4	2.27m x 2.25m max	7'6" x 7'5" max

Key

A/C – Airing Cupboard Clks – Cloakroom  
Cpd – Cupboard W – Wardrobe Space

Plots: 15, 24\*, 25\* & 26

The floor plans depict a typical layout of this house type. For exact plot specification, details of external and internal finishes, dimensions and floor plan differences consult your sales executive. All dimensions are + or – 50mm and floor plans are not shown to scale. The kitchen layout and furniture positions are for indicative purposes only. \*Plots 24 & 25 are handed. 37155 / January 2020.

Want to view one of our gorgeous new show homes?  
Find a development and book an online appointment at:  
[taylorwimpey.co.uk](https://www.taylorwimpey.co.uk)

Taylor Wimpey





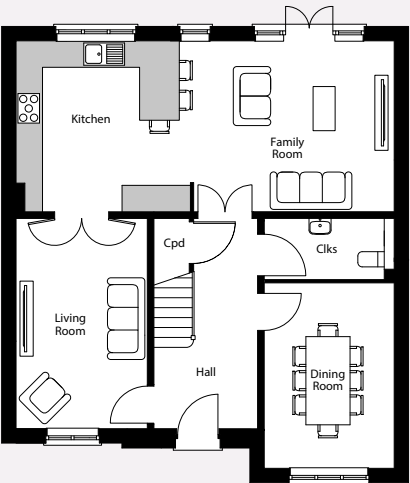
Images may include optional upgrades at additional cost. This image is from an imaginary viewpoint within an open space area. Its purpose is to give a feel for the development, not an accurate description of each property. The illustration shows a typical Taylor Wimpey home of this type, but there are, however, variances from site to site. External materials, finishes, landscaping and the position of garages, (where provided) may vary throughout the development. Properties may also be built handed (mirror image). Please ask for further details.

# THE JASMINE

*The Jasmine is a 4 bedroom home, the open-plan kitchen/family area acts as the social hub for the whole family. The space also opens through double doors into the living room. A separate dining room completes the first floor. Upstairs you will find the master bedroom with its dressing room and en suite shower room. There are two further double bedrooms, one of which has its own en suite shower room. Another flexible single bedroom and the family bathroom complete this home.*

TOTAL 191.9 sq. m. / 1,667 sq. ft.

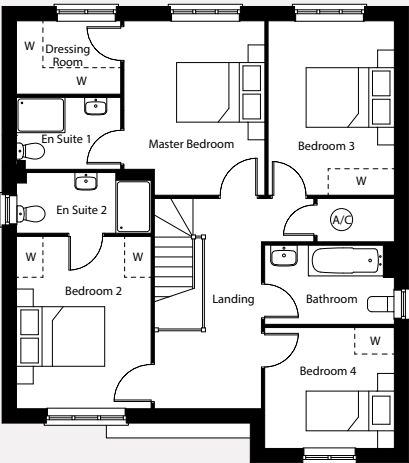
Ground floor



Kitchen/Family Area	8.56m x 3.87m max	28'2" x 12'9" max
Living Room	4.76m x 2.97m max	15'8" x 9'9" max
Dining Room	4.20m x 2.94m max	13'10" x 9'8" max

Key  
A/C – Airing Cupboard Clks – Cloakroom  
Cpd – Cupboard W – Wardrobe Space

First floor



Master Bedroom	3.95m x 3.19m max	13'0" x 10'6" max
Bedroom 2	3.90m x 3.05m max	12'10" x 10'0" max
Bedroom 3	3.95m x 2.86m max	13'0" x 9'5" max
Bedroom 4	2.94m x 2.74m max	9'8" x 9'0" max

Plots: 2\*, 3, 10\*, 11\* & 12

The floor plans depict a typical layout of this house type. For exact plot specification, details of external and internal finishes, dimensions and floor plan differences consult your sales executive. All dimensions are + or – 50mm and floor plans are not shown to scale. The kitchen layout and furniture positions are for indicative purposes only. \*Plots are handed. 37155 / January 2020.

Want to view one of our gorgeous new show homes?  
Find a development and book an online appointment at:

[taylorwimpey.co.uk](https://www.taylorwimpey.co.uk)

**Taylor**  
**Wimpey**





Taylor Wimpey

# THE LAUREL

4 bedroom home

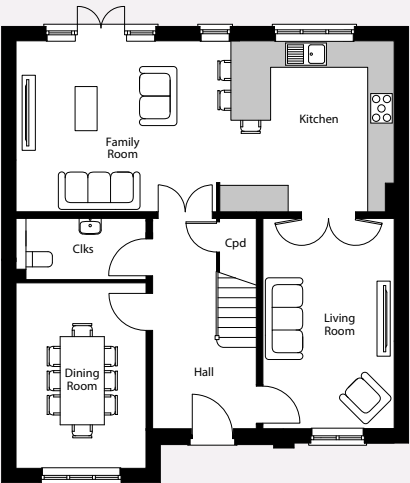
Images may include optional upgrades at additional cost. This image is from an imaginary viewpoint within an open space area. Its purpose is to give a feel for the development, not an accurate description of each property. The illustration shows a typical Taylor Wimpey home of this type, but there are, however, variances from site to site. External materials, finishes, landscaping and the position of garages, (where provided) may vary throughout the development. Properties may also be built handed (mirror image). Please ask for further details.

## THE LAUREL

The Laurel is a 4 bedroom home, the open-plan kitchen/family area acts as the social hub for the whole family. The space also opens through double doors into the living room. A separate dining room completes the ground floor layout. Upstairs you will find the master bedroom with its dressing room and en suite shower room. There are two further double bedrooms, one of which has its own en suite shower room. Another flexible single bedroom and the family bathroom complete this home.

TOTAL 157.7 sq. m. / 1,697 sq. ft.

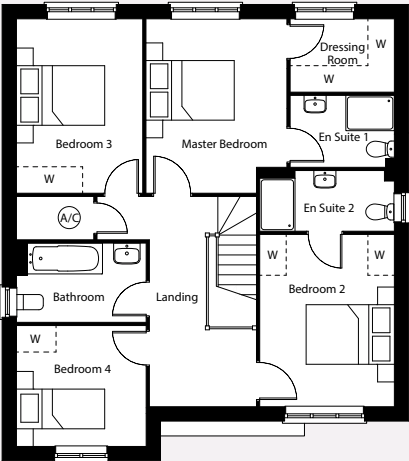
Ground floor



Kitchen/Family Area	8.56m x 3.87m max	28'2" x 12'9" max
Living Room	2.97m x 4.76m max	9'9" x 15'8" max
Dining Room	2.94m x 4.20m max	9'8" x 13'10" max

Key  
A/C – Airing Cupboard Clks – Cloakroom  
Cpd – Cupboard W – Wardrobe Space

First floor



Master Bedroom	3.95m x 3.19m max	13'0" x 10'6" max
Bedroom 2	3.90m x 3.05m max	12'10" x 10'0" max
Bedroom 3	3.95m x 2.86m max	13'0" x 9'5" max
Bedroom 4	2.94m x 2.74m max	9'8" x 9'0" max

Plot: 13

The floor plans depict a typical layout of this house type. For exact plot specification, details of external and internal finishes, dimensions and floor plan differences consult your sales executive. All dimensions are + or – 50mm and floor plans are not shown to scale. The kitchen layout and furniture positions are for indicative purposes only. 37155 / January 2020.

Want to view one of our gorgeous new show homes?  
Find a development and book an online appointment at:

[taylorwimpey.co.uk](https://www.taylorwimpey.co.uk)

Taylor Wimpey





THE LAVENDER

The Lavender is a 4 bedroom home, the open-plan kitchen/family area acts as the social hub for the whole family. The space also opens through double doors into the living room. A separate dining room completes the first floor. Upstairs you will find the master bedroom with its dressing room and en suite shower room. There are two further double bedrooms, one of which has its own en suite shower room. Another flexible single bedroom and the family bathroom complete this home.

TOTAL 158.6 sq. m. / 1,707 sq. ft.

Ground floor

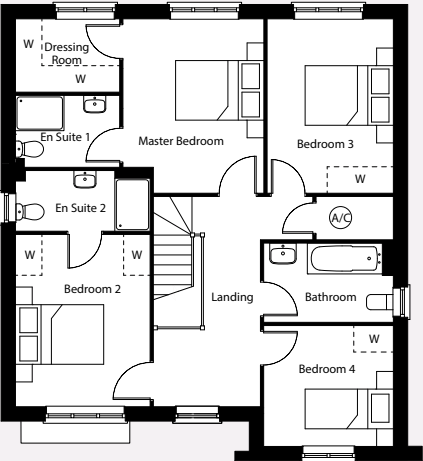


Kitchen/Family Area	8.56m x 3.87m max	28'2" x 12'9" max
Living Room	5.21m x 2.97m max	17'1" x 9'9" max
Dining Room	4.20m x 2.94m max	13'10" x 9'8" max

Key

A/C – Airing Cupboard   Clks – Cloakroom  
Cpd – Cupboard   W – Wardrobe Space

First floor



Master Bedroom	3.95m x 3.19m max	13'0" x 10'6" max
Bedroom 2	3.90m x 3.05m max	12'10" x 10'0" max
Bedroom 3	3.95m x 2.86m max	13'0" x 9'5" max
Bedroom 4	2.94m x 2.74m max	9'8" x 9'0" max

Plots: 6\* & 7

The floor plans depict a typical layout of this house type. For exact plot specification, details of external and internal finishes, dimensions and floor plan differences consult your sales executive. All dimensions are + or – 50mm and floor plans are not shown to scale. The kitchen layout and furniture positions are for indicative purposes only. \*Plot 6 is handed. 37155 / January 2020.

Want to view one of our gorgeous new show homes?  
Find a development and book an online appointment at:

taylorwimpey.co.uk

Taylor Wimpey





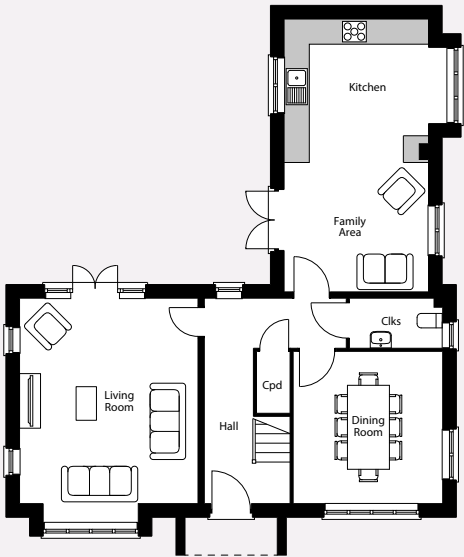
Images may include optional upgrades at additional cost. This image is from an imaginary viewpoint within an open space area. Its purpose is to give a feel for the development, not an accurate description of each property. The illustration shows a typical Taylor Wimpey home of this type, but there are, however, variances from site to site. External materials, finishes, landscaping and the position of garages, (where provided) may vary throughout the development. Properties may also be built handed (mirror image). Please ask for further details.

# THE OAKFORD

The Oakford is a 4 bedroom family home with an L-shaped layout. The ground floor features a kitchen/family area, a separate dining room for special occasions and a living room with double doors to the garden. On the second floor, there are 3 double bedrooms, the master bedroom has an en suite shower room, a further bedroom and the family bathroom.

TOTAL 148.8 sq. m. / 1,602 sq. ft.

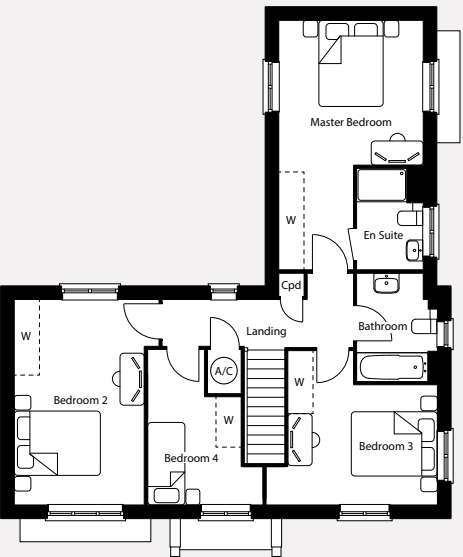
Ground floor



Kitchen/Family Area	6.49m x 3.44m max	21'4" x 11'3" max
Dining Room	3.62m x 3.56m max	11'11" x 11'8" max
Living Room	5.34m x 4.25m max	17'6" x 13'11" max

Key  
A/C – Airing Cupboard Clks – Cloakroom  
Cpd – Cupboard W – Wardrobe Space

First floor



Master Bedroom	5.94m x 3.44m max	19'6" x 11'3" max
Bedroom 2	4.89m x 3.44m max	16'1" x 11'4" max
Bedroom 3	3.67m x 4.10m max	13'6" x 12'1" max
Bedroom 4	3.70m x 2.74m max	12'2" x 9'0" max

## Plot: 27

The floor plans depict a typical layout of this house type. For exact plot specification, details of external and internal finishes, dimensions and floor plan differences consult your sales executive. All dimensions are + or – 50mm and floor plans are not shown to scale. The kitchen layout and furniture positions are for indicative purposes only. 37155 / January 2020.

Want to view one of our gorgeous new show homes?  
Find a development and book an online appointment at:

[taylorwimpey.co.uk](https://www.taylorwimpey.co.uk)







Taylor Wimpey

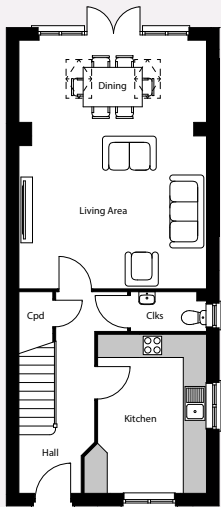
# THE ASTER

4 bedroom home

*This 4 bedroom home set over 3 storeys is built with families in mind. The open-plan living/dining area has plenty of space for entertaining family and friends, while the separate kitchen and downstairs cloakroom complete the downstairs. Upstairs you will find 3 spacious bedrooms and a family bathroom, as well as the master bedroom with en suite shower room completing the second floor.*

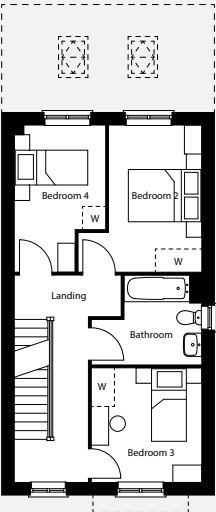
TOTAL 138.9 sq. m. / 1,495 sq. ft.

Ground floor



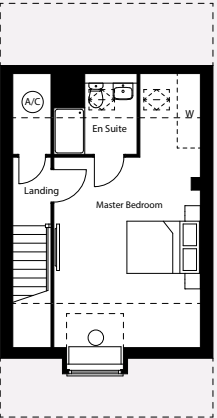
Kitchen	4.56m x 3.16m max	15'0" x 10'5" max
Living/Dining Area	6.56m x 4.85m max	21'6" x 15'11" max

First floor



Bedroom 2	3.80m x 3.20m max	12'6" x 10'6" max
Bedroom 3	2.96m x 2.85m max	9'9" x 9'5" max
Bedroom 4	3.80m x 2.36m max	12'6" x 7'9" max

Second floor



Master Bedroom	5.35m x 3.86m max	17'7" x 12'8" max
----------------	-------------------	-------------------

Key  
A/C – Airing Cupboard   Clks – Cloakroom   Cpd – Cupboard   - - - - Restricted Headroom   [ ] – Roof Window   W – Wardrobe Space

**Plots:** 17 & 21

The floor plans depict a typical layout of this house type. For exact plot specification, details of external and internal finishes, dimensions and floor plan differences consult your sales executive. All dimensions are + or – 50mm and floor plans are not shown to scale. The kitchen layout and furniture positions are for indicative purposes only. 37155 / January 2020.

Want to view one of our gorgeous new show homes?  
Find a development and book an online appointment at:

[taylorwimpey.co.uk](http://taylorwimpey.co.uk)



Images may include optional upgrades at additional cost. This image is from an imaginary viewpoint within an open space area. Its purpose is to give a feel for the development, not an accurate description of each property. The illustration shows a typical Taylor Wimpey home of this type, but there are, however, variances from site to site. External materials, finishes, landscaping and the position of garages, (where provided) may vary throughout the development. Properties may also be built handed (mirror image). Please ask for further details.





Taylor Wimpey

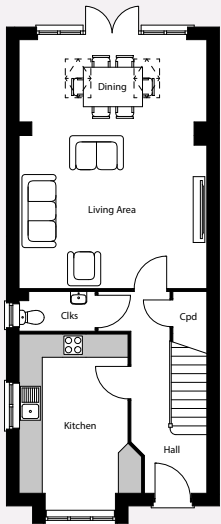
# THE PALM

4 bedroom home

The Palm is a 4 bedroom house perfect for modern living. The open-plan living/dining area has plenty of space to entertain family and friends, while upstairs there is space for all the family. 3 spacious bedrooms and a family bathroom can be found on the first floor, while the master bedroom with en suite shower room can be found on the second floor.

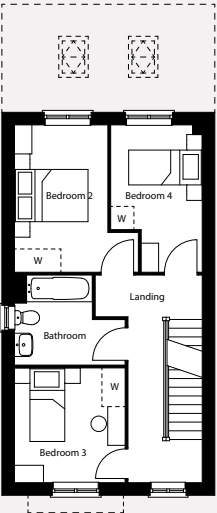
TOTAL 139.7 sq. m. / 1,504 sq. ft.

Ground floor



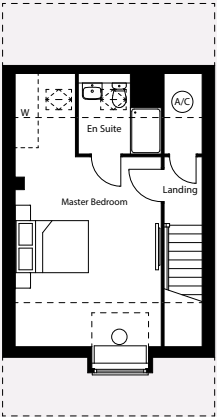
Kitchen	4.11m x 3.16m max	13'6" x 10'5" max
Living/Dining Area	6.56m x 4.85m max	21'6" x 15'11" max

First floor



Bedroom 2	3.80m x 3.20m max	12'6" x 10'6" max
Bedroom 3	2.96m x 2.85m max	9'9" x 9'5" max
Bedroom 4	3.80m x 3.20m max	12'6" x 10'6" max

Second floor



Master Bedroom	5.35m x 3.86m max	17'7" x 12'8" max
----------------	-------------------	-------------------

Key  
A/C – Airing Cupboard Clks – Cloakroom Cpd – Cupboard - - - Restricted Headroom W – Wardrobe Space

Plots: 16 & 20

The floor plans depict a typical layout of this house type. For exact plot specification, details of external and internal finishes, dimensions and floor plan differences consult your sales executive. All dimensions are + or – 50mm and floor plans are not shown to scale. The kitchen layout and furniture positions are for indicative purposes only. 37155 / January 2020.

Want to view one of our gorgeous new show homes?  
Find a development and book an online appointment at:

[taylorwimpey.co.uk](https://www.taylorwimpey.co.uk)

Taylor Wimpey

Images may include optional upgrades at additional cost. This image is from an imaginary viewpoint within an open space area. Its purpose is to give a feel for the development, not an accurate description of each property. The illustration shows a typical Taylor Wimpey home of this type, but there are, however, variances from site to site. External materials, finishes, landscaping and the position of garages, (where provided) may vary throughout the development. Properties may also be built handed (mirror image). Please ask for further details.



# FROM LOOKING ROUND TO MOVING IN...

