



Dargavel Village
BISHOPTON



About Dargavel

Dargavel Village combines the tranquillity of rural living with all the benefits of urban life.

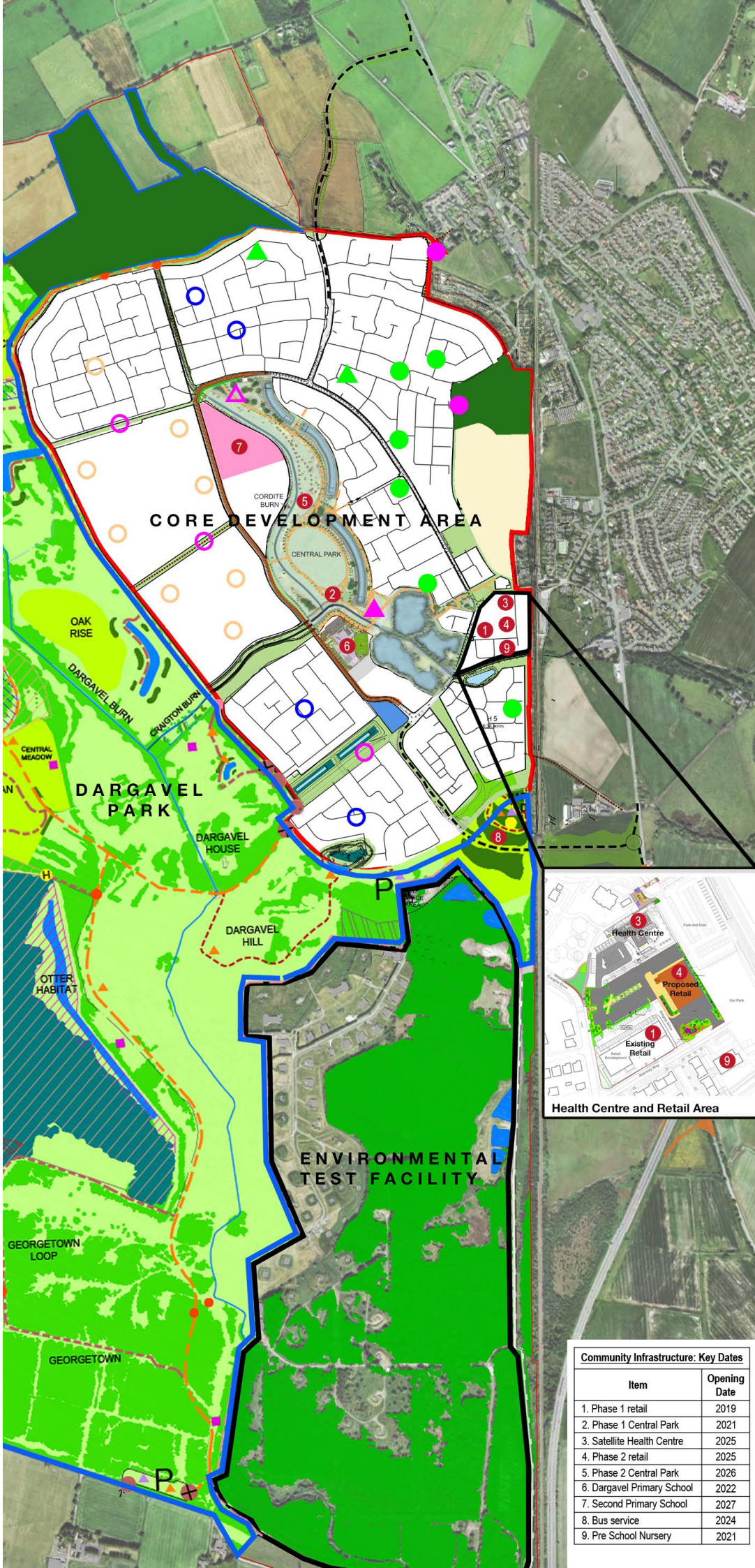
It is a 565 acre residential development set within a large woodland park. The village was established in 2013 and has grown into a vibrant community. Dargavel is a beautifully designed environment with tree lined avenues, attractive green spaces, village ponds, cycle ways and footpaths and a number of civic spaces.

Dargavel Village is a new and exciting development which is fast becoming the aspirational place to live in Scotland that has been recognised by a number of awards including the Homes for Scotland award for Best New Development and the RTPi award for the Excellence in Planning.

Our master plan outlines a comprehensive approach to creating a vibrant, inclusive and eco-friendly neighbourhood that meets the diverse needs of residents. The master plans demonstrates how we plan to deliver a harmonious living environment that integrates residential, recreational and commercial spaces, promoting a balanced lifestyle. Key development highlights include;

- **Residential areas:**
A variety of housing options catering to different needs and preferences
- **Green Spaces:**
Extensive parks, playground and green corridors to promote outdoor activities and biodiversity
- **Amenities:**
Schools, healthcare facilities and retail spaces to foster convenience and connectivity
- **Infrastructure:**
Well-planned roads, park & ride and pedestrian walkways to ensure smooth and safe mobility

Dargavel is built on the principles of sustainability, inclusivity and quality of life with the goal of creating a vibrant community where residents can thrive.



Community Infrastructure: Key Dates	
Item	Opening Date
1. Phase 1 retail	2019
2. Phase 1 Central Park	2021
3. Satellite Health Centre	2025
4. Phase 2 retail	2025
5. Phase 2 Central Park	2026
6. Dargavel Primary School	2022
7. Second Primary School	2027
8. Bus service	2024
9. Pre School Nursery	2021

The Dargavel Village Development...

looking forward

Central Park

The new Central Park will sit at the heart of Dargavel Village development. It will feature two play areas, including a climbing forest, 2,000 newly planted trees and more than two miles of paths running through the park. Grasslands, wildflower meadows, several burns, and ponds with 3,600 new wetland plants will also be added.

Eight public entrances to the park will be built and will provide a venue capable of hosting the annual Bishopton Day gala.



2025

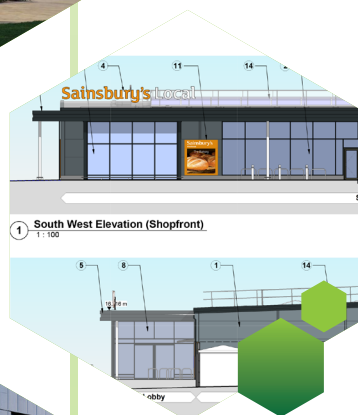


Satellite Health Facility

The new satellite health facility will support the provision of essential health and social services within the dargavel development. Providing rooms for consultancy, treatment, multi-use and one community room this flexible facility will maximise clinicians ability to deliver services to current and future residents.

Sainsbury Small Supermarket

The new Sainsbury supermarket will serve as a main food shopping facility for residents of Bishopton, providing an enhanced range of goods compared to the existing Sainsbury's Local convince store.



2027



Primary School

A second primary accompany the already existing Dargavel and Bishopton Primary Schools to provide primary stage education services to families across the development.

Dargavel Country Park

Dargavel Park is an area of publicly accessible open space. It will be a recreational resource for Renfrewshire and the wider community. The park provides extensive space for recreational and leisure activities and consists of diverse ecological and landscape features. An integral part of the community, the park has been developed to protect habitats, support wellbeing and provide safe access to the countryside.



2028