





# PROTECTION



**PROTEC**  
TEMPORARY PROTECTION

Temporary Protection Materials	358
Protec – Your Trusted Partner	359
Site Set-up	360
Groundworks	365
Brickwork	370
External Doors	375
Windows	378
Stairs	381
Floors & Carpets	384
Internal Doors	388
Kitchens	390
Sanitary Ware	394
Ancillaries	398



# TEMPORARY PROTECTION MATERIALS

PROTECTION

- 1** It is TW guidance that temporary protection is used on all our sites.

---
- 2** This ensures we minimise potential damage to materials and ultimately improves the quality and efficiency when delivering our customers homes.

---
- 3** If we don't use temporary protection we could encounter unforeseen delays in our build programme and incur increased costs.

---
- 4** The temporary protection materials set out in this document offer the most economically and environmentally sustainable products available and, wherever possible, products should be reused throughout the build programme.

---
- 5** As part of their agreement with TW, all trades need to fit the minimum standard of temporary protection materials as indicated in this document on all our sites.

---
- 6** Trades need to ensure that temporary protection is in place before they commence any work. If not, they should inform the Site Management to ensure they aren't charged for any resulting damage. Each trade is responsible for re-applying temporary protection after completing work in an area or any resulting damage will be charged to the relevant trade.

---
- 7** Site Management should not sign off any paperwork or the BQC until the work is checked and temporary protection is in place.

---

**All products are approved to LPS or Certifire standards as stipulated for temporary protection materials within the joint code of practice.**



We make it easy for you to deal with us. From order to on site delivery our people, processes and products help you get the job done on time and on budget every time.

You can easily place a new or call off order:

Freephone: **0800 834 704**

Mobile Friendly: **01625 855600**

Email: **[taylorwimpey@protection.co.uk](mailto:taylorwimpey@protection.co.uk)**

We pick and pack all orders placed between 07:30 and 17:00 the same day and guarantee delivery within 2 - 3 days ready for temporary protection to be used on site.





# SITE SET-UP

PROTECTION

## SCAFFOLD SHEETING

LPS 1215 approved flame retardant TW Proscuff and Hi Vis Scaffold Tube protection received on their devices.



**TW FR Proscuff**

**Hi Vis Scaffold Tube Protectors**

A scaffold design is always required when using scaffold sheeting and HSE Guidance should be sought.

## PRODUCT INSTALLATION AND REMOVAL RESPONSIBILITIES

PRODUCT	SUPPLIED BY	INSTALLED BY	REMOVED BY
Taylor Wimpey FR Proscuff	Taylor Wimpey	Scaffolding Contractor	Scaffolding Contractor
Hi Vis Scaffold Tube Protectors	Taylor Wimpey	Scaffolding Contractor	Scaffolding Contractor
Elasticated Proscuff Ties	Taylor Wimpey	Scaffolding Contractor	Scaffolding Contractor

## GUIDELINES FOR INSTALLATION AND REMOVAL

FIRST INSTALLATION	REMOVAL
Once scaffolding is installed	As scaffold is struck



Place an order: 0800 834 704 | [taylorwimpey@protection.co.uk](mailto:taylorwimpey@protection.co.uk)



## DIGISCAFF

**USED BY EXCEPTION ONLY AND ORDERED VIA THE SALES TEAM.  
A SCAFFOLD DESIGN IS ALWAYS REQUIRED WHEN USING DIGISCAFF  
AND HSE GUIDANCE SHOULD BE SOUGHT.**

Large format LPS 1215 approved flame retardant TW Digiscaff for hoarding and blocks of apartments which are visible to the customer.



Taylor Wimpey Digiscaff

## PRODUCT INSTALLATION AND REMOVAL RESPONSIBILITIES

PRODUCT	SUPPLIED BY	INSTALLED BY	REMOVED BY
FR Taylor Wimpey Digiscaff	Taylor Wimpey	Scaffolding Contractor	Scaffolding Contractor
Elasticated Proscuff Ties	Taylor Wimpey	Scaffolding Contractor	Scaffolding Contractor

## GUIDELINES FOR INSTALLATION AND REMOVAL

FIRST INSTALLATION	REMOVAL
Once scaffolding is installed	As scaffold is struck



# SITE SET-UP

PROTECTION

## HERAS FENCING SCREEN



Can be used multiple times, depending on product condition

TW Heras Fencing Screen

### PRODUCT INSTALLATION AND REMOVAL RESPONSIBILITIES

PRODUCT	SUPPLIED BY	INSTALLED BY	REMOVED BY
Taylor Wimpey Heras Fencing Screen	Taylor Wimpey	Taylor Wimpey / Groundworker	Taylor Wimpey / Groundworker
White Nylon Cables Ties	Taylor Wimpey	Taylor Wimpey / Groundworker	Taylor Wimpey / Groundworker

### GUIDELINES FOR INSTALLATION AND REMOVAL – AS REQUIRED

FIRST INSTALLATION	REMOVAL
Once Heras Fence is installed	After site or phase completion



Place an order: 0800 834 704 | [taylorwimpey@protection.co.uk](mailto:taylorwimpey@protection.co.uk)





## SMARTSCREEN

**USED BY EXCEPTION ONLY.**

**BUMT APPROVAL IS REQUIRED DUE TO HIGH COST LEVELS TO SUPPLY.**

Large format custom printed SmartScreen.



SmartScreen

## PRODUCT INSTALLATION AND REMOVAL RESPONSIBILITIES

PRODUCT	SUPPLIED BY	INSTALLED BY	REMOVED BY
SmartScreen	Taylor Wimpey	Taylor Wimpey	Taylor Wimpey
White Nylon CablesTies	Taylor Wimpey	Taylor Wimpey	Taylor Wimpey

## GUIDELINES FOR INSTALLATION AND REMOVAL

FIRST INSTALLATION	REMOVAL
Once SmartScreen is installed	After site or phase completion





# SITE SET-UP PRODUCTS SUMMARY

PROTECTION

## SCAFFOLD SHEETING

PRODUCTS	SIZE	TYPE
Taylor Wimpey FR Proscaff	2m x 45m	Roll
Elasticated Proscaff Ties (100 pack)	300mm	Pack
Hi Vis Scaffold Tube Protectors	2m	Tube

## DIGISCAFF (ONLY ORDERED VIA THE SALES TEAM) – SCAFFOLD DESIGN REQUIRED

PRODUCTS	SIZE	TYPE
Taylor Wimpey FR Digiscaff	Various	Roll
Elasticated Proscaff Ties (100 pack)	300mm	Pack

## HERAS FENCE

PRODUCTS	SIZE	TYPE
Taylor Wimpey Heras Fencing Screen	1.85m x 50m	Roll
White Nylon Cable Ties (100 pack)	300mm x 4.8mm	Pack

## SMARTSCREEN – BUMT APPROVAL REQUIRED

PRODUCTS	SIZE	TYPE
SmartScreen	Various	Roll
White Nylon Cable Ties (100 pack)	300mm x 4.8mm	Pack

## SITE SET-UP ADDITIONAL PRODUCTS – SCAFFOLD DESIGN REQUIRED

FLAME-RETARDANT PRODUCTS	SIZE	TYPE
Scaffnet FR	2m x 50m	Roll

NON FLAME-RETARDANT PRODUCTS	SIZE	TYPE
Taylor Wimpey Heras Mesh Panel	1.85m x 3.2m	Banner
Debris Netting	2m x 50m	Roll

**Note:** See HSE Manual for guidance.



Place an order: 0800 834 704 | [taylorwimpey@protection.co.uk](mailto:taylorwimpey@protection.co.uk)



## MANHOLE COVERS

Hi Vis Manhole Covers are required to protect manholes in plant / vehicle / pedestrian routes where trips or damage may occur.



### Hi Vis Manhole Covers

Assemble Hi Vis Manhole Protector as marked – weigh down by using a block

Position and complete installation

Manhole fully protected

## PRODUCT INSTALLATION AND REMOVAL RESPONSIBILITIES

PRODUCT	SUPPLIED BY	INSTALLED BY	REMOVED BY
Hi Vis Manhole Protectors	Groundworker	Groundworker	Groundworker

## GUIDELINES FOR INSTALLATION AND REMOVAL

FIRST INSTALLATION	REMOVAL
Once manhole is in place	Once manhole is level with finished ground level



# GROUNDWORKS

PROTECTION

## ACO DRAINS

ACO Drain Protectors.



ACO Drain Covers

### PRODUCT INSTALLATION AND REMOVAL RESPONSIBILITIES

PRODUCT	SUPPLIED BY	INSTALLED BY	REMOVED BY
Taylor Wimpey ACO Drain Covers	Groundworker	Groundworker	Groundworker

### GUIDELINES FOR INSTALLATION AND REMOVAL

FIRST INSTALLATION	REMOVAL
Once ACO drain is in place	Stage 85 Clean and CML



Place an order: 0800 834 704 | [taylorwimpey@protection.co.uk](mailto:taylorwimpey@protection.co.uk)



## PIPE CAPS

All soil pipes to be sealed with Pipe Caps.



Pipe Caps



## PRODUCT INSTALLATION AND REMOVAL RESPONSIBILITIES

PRODUCT	SUPPLIED BY	INSTALLED BY	REMOVED BY
Pipe Caps	Groundworker	Groundworker	Plumber

## GUIDELINES FOR INSTALLATION AND REMOVAL

FIRST INSTALLATION	REMOVAL
Once pipework is installed	On connection



# GROUNDWORKS

PROTECTION

## SERVICES

Incoming services to be sealed using Temporary Pipe Plugs.



Can be used multiple times, depending on product condition



Temporary Pipe Plugs

## PRODUCT INSTALLATION AND REMOVAL RESPONSIBILITIES

PRODUCT	SUPPLIED BY	INSTALLED BY	REMOVED BY
Pipe Plugs	Groundworker	Groundworker	Plumber

## GUIDELINES FOR INSTALLATION AND REMOVAL

FIRST INSTALLATION	REMOVAL
Once pipework is installed	On correction

# GROUNDWORK PRODUCTS SUMMARY



## MANHOLES

PRODUCT	SIZE	TYPE
Hi Vis Manhole Protectors (pack of 10)	600mm x 600mm	Pack

## ACO DRAINS

PRODUCT	SIZE	TYPE
Taylor Wimpey ACO Drains (pack of 50)	1000mm	Pack

## SERVICES

PRODUCTS	SIZE	TYPE
Pipe Caps (pack of 20)	50mm	Pack
Pipe Plugs (pack of 20)	40mm	Pack

## GROUNDWORKS ADDITIONAL PRODUCTS

NON FLAME RETARDANT PRODUCTS	SIZE	TYPE
Rhino Tile Black	500mm x 500mm	Tile
Rhino Yellow Ramp Edge Female	85mm wide	Edge strip
Rhino Yellow Ramp Edge Male	85mm wide	Edge strip





# BRICKWORK

PROTECTION

## CILL PROTECTOR AND FOAM CILL PROTECTOR



✓  
Can be used once



✓+  
Can be used multiple times, depending on product condition

### Cill Protector

300mm DPC bedded approximately 30mm into bed joint. Joint raked out 10mm whilst green.

### Foam Cill Protector

Use heavy-duty Cill Protector Foam for sensitive areas such as stone edging and stone cills.

## PRODUCT INSTALLATION AND REMOVAL RESPONSIBILITIES

PRODUCT	SUPPLIED BY	INSTALLED BY	REMOVED BY
DPC Cill Protector	Bricklayer	Bricklayer	Bricklayer
Foam Cill Protector	Bricklayer	Bricklayer	Bricklayer

## GUIDELINES FOR INSTALLATION AND REMOVAL

FIRST INSTALLATION	REMOVAL
Installed with first course of bricks. Block over cant brick or stonework	As scaffold is struck





## TEMPORARY DOWNPIPE



Temporary Downpipe

## PRODUCT INSTALLATION AND REMOVAL RESPONSIBILITIES

PRODUCT	SUPPLIED BY	INSTALLED BY	REMOVED BY
Temporary Downpipe	Plumber	Plumber	Plumber

## GUIDELINES FOR INSTALLATION AND REMOVAL

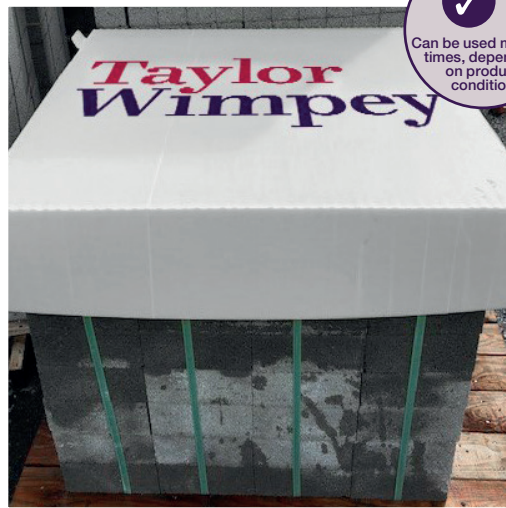
FIRST INSTALLATION	REMOVAL
First Installation once outlet is in place	Once downpipe is ready to install



# BRICKWORK

PROTECTION

## BRICK AND BLOCK COVERS



Can be used multiple times, depending on product condition



Can be used multiple times, depending on product condition

TW Block Covers

TW Brick Covers

## PRODUCT INSTALLATION AND REMOVAL RESPONSIBILITIES

PRODUCT	SUPPLIED BY	INSTALLED BY	REMOVED BY
Taylor Wimpey Brick Covers	Bricklayer / Taylor Wimpey	Bricklayer	Bricklayer
Taylor Wimpey Block Covers	Taylor Wimpey	Bricklayer	Bricklayer

## GUIDELINES FOR INSTALLATION AND REMOVAL

FIRST INSTALLATION	REMOVAL
Once bricks supplied on site	As required and re-applied at the end of each day
Once bricks supplied on site	As required and re-applied at the end of each day



## METER BOX COVERS



### TW Meter Box Protector

Fold Meter Box Protector to size using marked corrugations. Install over meter boxes and fix to wall using nails or tape.

Meter boxes are fully protected.



## PRODUCT INSTALLATION AND REMOVAL RESPONSIBILITIES

PRODUCT	SUPPLIED BY	INSTALLED BY	REMOVED BY
Taylor Wimpey Meter Box Protector	Taylor Wimpey	Taylor Wimpey	Taylor Wimpey

## GUIDELINES FOR INSTALLATION AND REMOVAL

FIRST INSTALLATION	REMOVAL
Once meter box is fitted	Once brickwork is complete and meter installed



# BRICKWORK PRODUCTS SUMMARY

PROTECTION

## BRICKWORK PROTECTION

NON FLAME RETARDANT PRODUCTS	SIZE	TYPE
DPC Cill Protector	300mm x 20m	Roll
Foam Cill Protector	2m	Tube
Temporary Downpipe	254mm x 200m	Roll
Taylor Wimpey Brick Covers (pack of 20)	Standard	Pack
Taylor Wimpey Block Covers (pack of 10)	915mm x 915mm	Pack

## METER BOXES

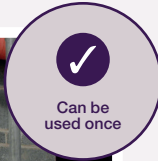
PRODUCTS	SIZE	TYPE
Taylor Wimpey Meter Box Cover (pack of 10)	610mm x 445mm	Pack

## BRICKWORK – ADDITIONAL PRODUCTS

NON FLAME RETARDANT PRODUCTS	SIZE	TYPE
Hessian Rolls	1.37m x 42m	Roll
1000 Gauge Black Polythene	4m x 25m	Roll
Black Polythene Rubble Bags (100 bags)	820mm x 1950mm	Pack



## EXTERNAL DOOR PROTECTION



### TW Door Sleeves

Ensure door is clean and free from any grit and dirt. Door handles and ironmongery must be removed and stored safely by site team. Door delivery packaging should be used to protect the doors until it is no longer fit for purpose. Fix door sleeve protection by sliding onto the door.

### TW HD Door Protector

**USED BY EXCEPTION ONLY FOR HIGH TRAFFIC / HIGH SPECIFICATION DOORS.**

Printed TW HD Door Protector including velcro fixing.

## PRODUCT INSTALLATION AND REMOVAL RESPONSIBILITIES

PRODUCT	SUPPLIED BY	INSTALLED BY	REMOVED BY
Taylor Wimpey Door Sleeves	Taylor Wimpey	Carpenter	Cleaner
Silver Cloth Tape	Taylor Wimpey	Carpenter	Cleaner
Taylor Wimpey HD Door Protector	Taylor Wimpey	Carpenter	Cleaner

## GUIDELINES FOR INSTALLATION AND REMOVAL

FIRST INSTALLATION	REMOVAL
After door fixing	During finals



# EXTERNAL DOORS

PROTECTION

## CILL PROTECTOR AND FOAM CILL PROTECTOR



### Rigid Threshold Protector

Remove weather bar and store. Fit Proplex threshold sheet then secure in place using Rigid Threshold Protector.

## PRODUCT INSTALLATION AND REMOVAL RESPONSIBILITIES

PRODUCT	SUPPLIED BY	INSTALLED BY	REMOVED BY
Proplex Threshold Sheet	Taylor Wimpey	Carpenter	Taylor Wimpey
Rigid Threshold Protector	Taylor Wimpey	Carpenter	Taylor Wimpey

## GUIDELINES FOR INSTALLATION AND REMOVAL

FIRST INSTALLATION	REMOVAL
As soon as threshold is fitted	At pre dec builders clean. Carpenter to fit runner in place

# EXTERNAL DOOR PRODUCTS SUMMARY



## EXTERNAL DOORS

PRODUCTS	SIZE	TYPE
Taylor Wimpey Door Sleeves (25 sleeves)	2070mm x 895mm	Roll
Silver Cloth Tapes	75mm x 50m	Roll
Taylor Wimpey HD Door Protector	820mm x 1950mm	Pack

## EXTERNAL DOORS CILLS

PRODUCTS	SIZE	TYPE
Proplex Threshold Sheet (pack of 20)	185mm x 1100mm	Pack
Rigid Threshold Protector	185mm x 800mm	Profile

## EXTERNAL DOORS – ADDITIONAL PRODUCTS

FLAME RETARDANT PRODUCTS	SIZE	TYPE
FR Door Sleeves (50 sleeves)	2190mm x 1000mm	Roll
FR Door Sleeves (20 sleeves)	2200mm x 1100mm	Roll

NON-FLAME RETARDANT PRODUCTS	SIZE	TYPE
Hi Vis Yellow Rigid Tread Protector	185mm x 760mm	Profile
Black Rigid Tread Protector (Large)	185mm x 1100mm	Profile
Hi Vis Yellow Rigid Tread Protector (Large)	185mm x 1100mm	Profile





# WINDOWS

PROTECTION

## WINDOW CILLS



Can be used multiple times, depending on product condition

### Rigid Threshold Protector

Protect all UPVC or hardwood cills from damage using Proplex Cill Protectors and ToughSpec Low Tac Tape.

### PRODUCT INSTALLATION AND REMOVAL RESPONSIBILITIES

PRODUCT	SUPPLIED BY	INSTALLED BY	REMOVED BY
Taylor Wimpey Proplex Cill Protectors	Taylor Wimpey	Carpenter	Taylor Wimpey
High Performance Low Tack Tape	Taylor Wimpey	Carpenter	Taylor Wimpey

### GUIDELINES FOR INSTALLATION AND REMOVAL

FIRST INSTALLATION	REMOVAL
Fixed in place on install, 25mm back from reveals with ToughSpec Low Tack Tape	At pre dec builders clean stage



## UPVC WINDOWS



UPVC Window Film

### PRODUCT INSTALLATION AND REMOVAL RESPONSIBILITIES

PRODUCT	SUPPLIED BY	INSTALLED BY	REMOVED BY
Low Tack Film	Window Supplier	Window Supplier	Cleaner

### GUIDELINES FOR INSTALLATION AND REMOVAL

FIRST INSTALLATION	REMOVAL
Pre-installed on windows	<b>Internal</b> protection to be removed at pre dec builders clean <b>External</b> protection to be removed for mastick by cleaner



# WINDOW PRODUCTS SUMMARY

PROTECTION

## WINDOW CILLS

PRODUCTS	SIZE	TYPE
Taylor Wimpey Proplex Cill Protectors (pack of 25)	1200mm x 300mm	Pack
High Performance Low Tack Tape	48mm x 33mm	Roll

## WINDOWS

PRODUCTS	SIZE	TYPE
Low Tack Film (Window Supplier)	600mm x 100m	Roll

## WINDOWS – ADDITIONAL PRODUCTS

NON FLAME-RETARDANT PRODUCTS	SIZE	TYPE
Window Protector Roll (Large)	600mm x 100m	Roll
Window Protector Roll (Small)	600mm x 25mm	Roll



## STAIR TREADS



### Black Rigid Tread Protector

Fix Rigid Tread Protectors to each tread using pre-drilled fixing holes.

### PRODUCT INSTALLATION AND REMOVAL RESPONSIBILITIES

PRODUCT	SUPPLIED BY	INSTALLED BY	REMOVED BY
Black Rigid Tread Protector	Taylor Wimpey	Carpenter	Carpenter

### GUIDELINES FOR INSTALLATION AND REMOVAL

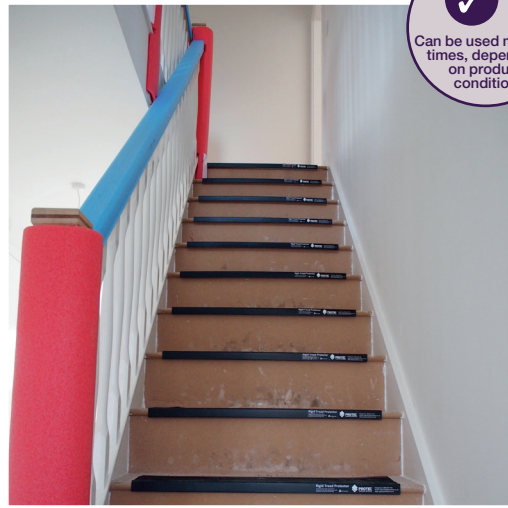
FIRST INSTALLATION	REMOVAL
Once stairs installed	Upon completion prior to builders clean



# STAIRS

PROTECTION

## NEWELL POSTS



Can be used multiple times, depending on product condition

Clip Newell Protector Tube onto stair newell post, and tape to secure.

## NEWELL PROTECTOR TUBE

PRODUCT	SUPPLIED BY	INSTALLED BY	REMOVED BY
Newell Protector Tube	Taylor Wimpey	Carpenter	Cleaner

## GUIDELINES FOR INSTALLATION AND REMOVAL

FIRST INSTALLATION	REMOVAL
Once stairs installed	Removed at final clean stage

# STAIR PRODUCTS SUMMARY



## STAIR TREADS

PRODUCTS	SIZE	TYPE
Black Rigid Tread Protector	185mm x 760mm	Profile

## NEWELL POSTS

PRODUCTS	SIZE	TYPE
Newell Protector Tube	2m	Profile

## STAIRS – ADDITIONAL PRODUCTS

FLAME RETARDANT PRODUCTS	SIZE	TYPE
FR Stair Protector (Tread, Nosing an Riser)	200mm x 150mm x 1.2m	Profile
FR Retardant Handrail Protection	2m	Profile

NON-FLAME RETARDANT PRODUCTS	SIZE	TYPE
Hi Vis Yellow Rigid Tread Protector	185mm x 760mm	Profile
Black Rigid Tread Protector (Large)	185mm x 1100mm	Profile
Hi Vis Yellow Rigid Tread Protector (Large)	185mm x 1100mm	Profile
U-profile Handrail Protector	2m	Profile
Newell Protector Roll	6mm x 20m	Roll



# FLOORS & CARPETS

PROTECTION

## TILED / VINYL / AMTICO AREAS



### TW Proplex Sheet

Cover with TW Branded Proplex using 75mm ToughSpec Low Tack Tape on perimeter and fixing on joints with Taylor Wimpey branded tape.

## PRODUCT INSTALLATION AND REMOVAL RESPONSIBILITIES

PRODUCT	SUPPLIED BY	INSTALLED BY	REMOVED BY
Taylor Wimpey 3mm Proplex	Taylor Wimpey	Floor Layer / Tiler	Cleaner
Protec Flooring Card	Taylor Wimpey	Floor Layer / Tiler	Cleaner
High Performance Low Tack Tape	Taylor Wimpey	Floor Layer / Tiler	Cleaner
Taylor Wimpey Tape	Taylor Wimpey	Floor Layer / Tiler	Cleaner

## GUIDELINES FOR INSTALLATION AND REMOVAL

FIRST INSTALLATION	REMOVAL
As soon as the floor is laid	Remove at final clean

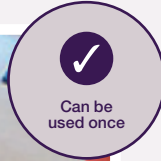


Place an order: 0800 834 704 | [taylorwimpey@protection.co.uk](mailto:taylorwimpey@protection.co.uk)





## CARPET PROTECTION



### TW Carpet Protection

Apply TW Carpet Protection by unrolling directly onto carpet. Cover hallways and any trafficked areas including carpeted stairs.

### PRODUCT INSTALLATION AND REMOVAL RESPONSIBILITIES

PRODUCT	SUPPLIED BY	INSTALLED BY	REMOVED BY
Taylor Wimpey Carpet Protection	Taylor Wimpey	Floor Contractor	Cleaner

### GUIDELINES FOR INSTALLATION AND REMOVAL

FIRST INSTALLATION	REMOVAL
After carpet fitting	Upon completion prior to HQI



# FLOORS & CARPETS PRODUCTS SUMMARY

PROTECTION

## TILED / VINYL / AMTICO AREAS

PRODUCTS	SIZE	TYPE
Taylor Wimpey 3mm Proplex	1.2 x 2.4m	Sheet
Protec Flooring Heavy Duty	1m x 100m	Roll
High Performance Low Tack Tape	48mm x 33m	Roll
Taylor Wimpey Logo Tape	50mm x 66m	Roll

## FLOOR PROTECTION – ADDITIONAL PRODUCTS

FLAME-RETARDANT PRODUCTS	SIZE	TYPE
FR Proplex 3mm Translucent	1.2m x 2.4m	Sheet
FR Breathershield, wood and ceramic floor protection	1m x 100m	Roll
FR Promesh	1.5m x 67m	Roll

NON FLAME-RETARDANT PRODUCTS	SIZE	TYPE
Proplex 3mm Translucent	1.2 x 2.4m	Sheet
Protec Flooring Light Duty	1m x 100m	Roll
Protec Flooring Light Duty	1m x 50m	Roll
Promesh Floor Protection	1.5m x 67m	Roll

# FLOORS & CARPETS PRODUCTS SUMMARY



PROTECTION

## CARPET PROTECTION

PRODUCTS	SIZE	TYPE
Taylor Wimpey Carpet Protection	600mm x 100m	Roll

## CARPET PROTECTION – ADDITIONAL PRODUCTS

FLAME-RETARDANT PRODUCTS	SIZE	TYPE
Carpetshield	800mm x 100m	Roll

NON FLAME-RETARDANT PRODUCTS	SIZE	TYPE
Taylor Wimpey Embossed Polythene	625mm x 170m	Roll
Carpet Protector Roll	600mm x 25m	Roll
Carpet Protector Roll	800mm x 100m	Roll



# INTERNAL DOORS

PROTECTION

## DOOR SLEEVES



Can be used multiple times, depending on product condition



Can be used multiple times, depending on product condition

### TW Door Sleeves

Internal door delivery packaging should be used until it is no longer fit for purpose. Once delivery packaging needs to be changed, slide the door sleeve onto the door and expose handles if required.

### Door fully protected

## PRODUCT INSTALLATION AND REMOVAL RESPONSIBILITIES

PRODUCT	SUPPLIED BY	INSTALLED BY	REMOVED BY
Taylor Wimpey Door Sleeves	Taylor Wimpey	Carpenter	Cleaner

## GUIDELINES FOR INSTALLATION AND REMOVAL

FIRST INSTALLATION	REMOVAL
Once doors are installed	Remove during final clean

# INTERNAL DOOR PRODUCTS SUMMARY



PROTECTION

## INTERNAL DOORS

PRODUCTS	SIZE	TYPE
Taylor Wimpey Door Sleeves (25 sleeves)	2070mm x 895mm	Roll

## INTERNAL DOORS – ADDITIONAL PRODUCTS

FLAME- RETARDANT PRODUCTS	SIZE	TYPE
FR Door Jamb Protector	2m	Profile

NON FLAME- RETARDANT PRODUCTS	SIZE	TYPE
Blue Jamb Protector U-profile	2m	Profile



# KITCHENS

PROTECTION

## KITCHEN PROTECTION

**Proplex sheets to critical areas, i.e. work surfaces with Promesh flexible roll everywhere else. Edges will be protected with cardboard edge protectors.**

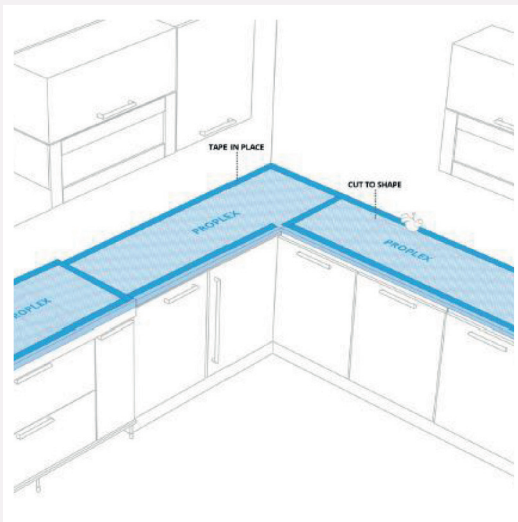
Estimate 2 sheets of Proplex required for most kitchens.

A full method statement for this alternative proposal including taping and eventualities where a full run of units change direction, etc has been produced as follows:

## OUTLINE PROCEDURE

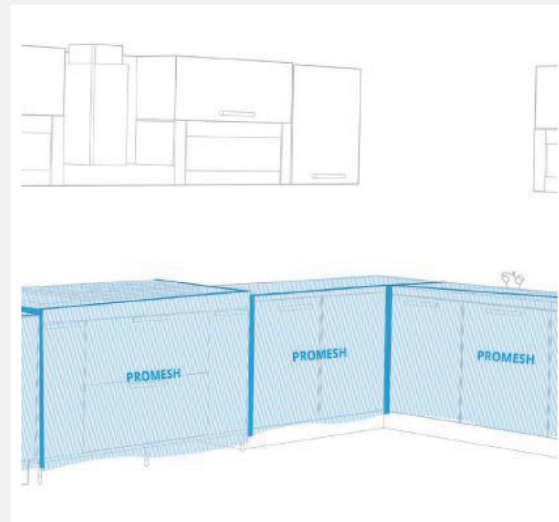
Once the kitchen installation is complete, the installer will carry out the joint inspection and sign off with the SiteM as per standard procedure.

The installer will then proceed to apply the protection.



### 1 Fitting Proplex Worktop Protection

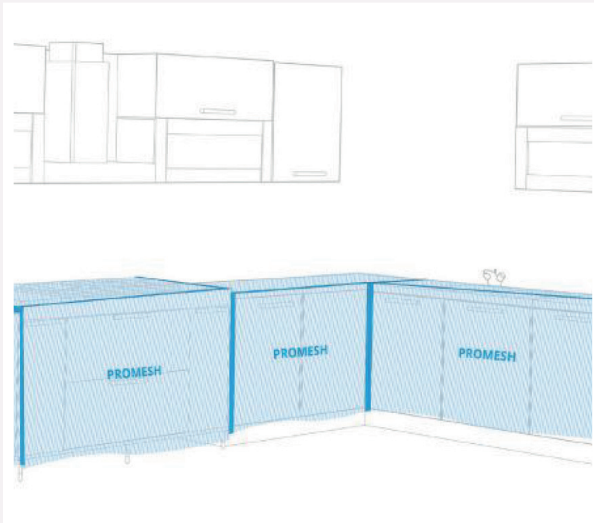
Proplex sheet should be cut to size and placed on the work surfaces approx. 30mm from the upstand allowing space to secure in place with tape along the back edge. Repeat to cover the full work surfaces including hob and sink cut-outs or, where sinks are supplied by Symphony, the sink top itself.



### 2 Applying Promesh

Leaving a 40mm gap between the edge of the Promesh protection and the wall (to allow access for decorating trades) run a piece of the protective sheet over the terminating end of each worktop run down to floor level and secure in place at the top and wall sides using tape.





### 3 Applying Promesh

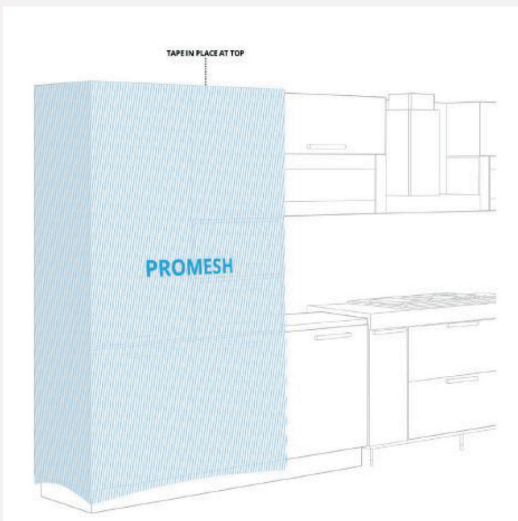
Run a length of protective sheet along the length of each separate base unit run over the previously fitted Proplex. Tape to the worksurface in the 30mm gap mentioned above. The 1.5 metre roll width of the Promesh allows the material to cover the width of the worktop and drape down to floor level taped at intervals under the plinth line.

### 4 Applying Promesh

Wherever a worktop run changes direction e.g. a corner, a separate piece of protection should be used.

### 5 Applying Promesh

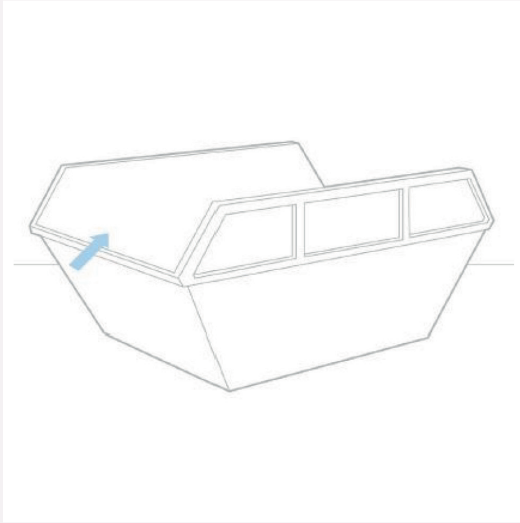
For larger units, tall housings or banks, secure the Promesh at the top and drape down over the front face of the units securing at intervals under the plinth line. Return round the sides leaving a 40mm gap between the edge of the Promesh protection and the wall (to allow access for decorating trades).





# KITCHENS

PROTECTION



If the SiteM is unable to carry out the joint inspection and sign off the installer shall apply protection. Taping the Promesh at intervals to the plinth line, allows for following plumbing and electrical trades to simply un-tape and peel back the Promesh without removing it completely, to provide work is completed and inspected.

## 6 Removing Promesh

Remove all of cuts of Proplex and Promesh to waste facilities on site.

### PRODUCT INSTALLATION AND REMOVAL RESPONSIBILITIES

PRODUCT	SUPPLIED BY	INSTALLED BY	REMOVED BY
Cardboard Edge Protectors	Appliance Supplier	Kitchen Installer	Cleaner
Taylor Wimpey 3mm Proplex	Appliance Supplier	Kitchen Installer	Cleaner
Promesh	Appliance Supplier	Kitchen Installer	Cleaner

### GUIDELINES FOR INSTALLATION AND REMOVAL

FIRST INSTALLATION	REMOVAL
On day of fit after sign off from site team	During final clean



## KITCHEN PROTECTION

PRODUCTS	SIZE	TYPE
Rigid Edge Protector	50mm x 50mm x 2m	Profile
Taylor Wimpey 3mm Proplex	1.2m x 2.4m	Sheet
Promesh	1.5m x 67m	Roll

## KITCHENS – ADDITIONAL PRODUCTS

FLAME- RETARDANT PRODUCTS	SIZE	TYPE
FR Hob and Oven Protector (pack of 10)	600mm x 600mm x 1450mm	Sheet
FR Edge Protection	75mm x 75mm x 1.5m	Profile

NON FLAME- RETARDANT PRODUCTS	SIZE	TYPE
Self Adhesive Bubblewrap (pack of 2)	750mm x 100m	Roll
Flexible Edge Protector	75mm x 75mm x 2m	Profile



# SANITARY WARE

PROTECTION

## BATHROOM SHOWER TRAY



Can be used multiple times, depending on footfall / product condition



Can be used once

### 1 Plywood Shower Tray Protector

Ensure tray is clean and free from debris before installation. 12mm plywood supplied by TW and cut by carpenter. installed immediately after fitting by plumber.

### 2 Shower Tray Protector

Ensure tray is clean and free from debris before installation. Position the edge of the Shower Tray Protector recessed from edge of shower tray to allow tiling.

## PRODUCT INSTALLATION AND REMOVAL RESPONSIBILITIES

PRODUCT	SUPPLIED BY	INSTALLED BY	REMOVED BY
Plywood Shower Tray Protector	Taylor Wimpey	Plumber	Cleaner
Taylor Wimpey Shower Tray Protector	Taylor Wimpey	Plumber	Cleaner

## GUIDELINES FOR INSTALLATION AND REMOVAL

FIRST INSTALLATION	REMOVAL
When installed	Straight after shower tray installation



## BATHROOM SINK AND WC



Can be used multiple times, depending on product condition

### 1 TW Sink Cover

Position over sink unit. No fixing or taping required.



Can be used multiple times, depending on product condition

### 2 TW Sink Protector

Position over sink unit. No fixing or taping required. Protect Taps with Flame Retardant Bubblewrap.



Can be used multiple times, depending on product condition

### 3 WC Protector

Position over WC unit – no fixing or taping required.

## PRODUCT INSTALLATION AND REMOVAL RESPONSIBILITIES

PRODUCT	SUPPLIED BY	INSTALLED BY	REMOVED BY
Taylor Wimpey WC Protector or WC Covers	Taylor Wimpey	Plumber	Cleaner
Taylor Wimpey Sink Protectors or Sink Covers	Taylor Wimpey	Plumber	Cleaner

## GUIDELINES FOR INSTALLATION AND REMOVAL

FIRST INSTALLATION	REMOVAL
When installed	Upon completion prior to CML



# SANITARY WARE

PROTECTION

## BATH



Can be used once



Can be used multiple times, depending on product condition

**1 Bubblewrap and Handrail Protector**  
Ensure bath is clean and free from debris before installation. Position bubblewrap over bath and Handrail Protector over the rim and secure with Low Tack Tape.

**2 TW Bath Protector**  
Position Bath Protector.

### PRODUCT INSTALLATION AND REMOVAL RESPONSIBILITIES

PRODUCT	SUPPLIED BY	INSTALLED BY	REMOVED BY
Taylor Wimpey Bath Protector	Taylor Wimpey	Plumber	Cleaner
FR Bubblewrap	Taylor Wimpey	Plumber	Cleaner
FR Handrail Protection	Taylor Wimpey	Plumber	Cleaner
High Performance Low Tack Tape	Taylor Wimpey	Plumber	Cleaner

### GUIDELINES FOR INSTALLATION AND REMOVAL

FIRST INSTALLATION	REMOVAL
When installed	After tiling completion should be reinstated until CML



Place an order: 0800 834 704 | [taylorwimpey@protection.co.uk](mailto:taylorwimpey@protection.co.uk)

# SANITARY WARE PRODUCT SUMMARY



## SHOWER TRAYS

PRODUCTS	SIZE	TYPE
Plywood Shower Tray Protector	1000mm x 800mm	Sheet
FR Taylor Wimpey Shower Tray (pack of 6)	780mm x 780mm	Sheet

## BATHROOM WC AND SINK

PRODUCTS	SIZE	TYPE
Taylor Wimpey WC Box	N/A	Box
Taylor Wimpey WC Covers (pack of 50)	N/A	Pack
Taylor Wimpey Sink Box	N/A	Box
Taylor Wimpey Sink Covers (pack of 50)	N/A	Pack

## BATH

PRODUCTS	SIZE	TYPE
Taylor Wimpey Bath Protector	1800mm x 800mm	Sheet
FR Bubblewrap	1200mm x 100m	Roll
FR Handrail Protection	2m	Profile

## SANITARY WARE ADDITIONAL PRODUCTS

PRODUCTS	SIZE	TYPE
Taylor Wimpey Hygiene Strips (500 strips)	50mm x 600mm	Pack
Bubblewrap Large Bubble	1200mm x 50m	Roll





# ANCILLARIES

PROTECTION

## ADHESIVE TAPES

FLAME-RETARDANT PRODUCTS	SIZE	TYPE
<b>General Purpose Tapes</b>		
Grey Low Tac Tape	50mm x 22m	Roll

NON FLAME-RETARDANT PRODUCTS	SIZE	TYPE
<b>General Purpose Tapes</b>		
Taylor Wimpey Logo Tape	50mm x 66m	Roll
<b>High Performance Tapes</b>		
High Performance Low Tack Tape	48mm x 33m	Roll
High Performance Low Tack Tape	75mm x 33m	Roll
<b>High Performance Tapes</b>		
Silver Cloth Tape	48mm x 50m	Roll
Black Cloth Tape	48mm x 50m	Roll

## ADHESIVE TAPES – ADDITIONAL PRODUCTS

NON FLAME-RETARDANT PRODUCTS	SIZE	TYPE
Duo Double Sided Tape	50mm x 33m	Roll
White Low Tack Tape	50mm x 33m	Roll
Black Ultra Low Tack Tape	50mm x 100m	Roll
Red and White Barrier Tape	75mm x 500m	Roll
Red and White Hazard Tape	50mm x 33m	Roll
Black and Yellow Hazard Tape	50mm x 33m	Roll
Masking Tape	50mm x 50m	Roll
Glass Tape	100mm x 100m	Roll



## TAPE ACCESSORIES

NON FLAME-RETARDANT PRODUCTS	SIZE	TYPE
Tape Applicator	50mm	N/A
Tape Applicator	75mm	N/A

## ADDITIONAL PRODUCTS

FLAME-RETARDANT PRODUCTS	SIZE	TYPE
Heavy Duty Flame-Retardant Poly	4m x 25m	Roll
Welding Blanket / Fire Screen	1.3m x 25m	Sheet

NON FLAME-RETARDANT PRODUCTS	SIZE	TYPE
Tarpaulin (Medium Duty)	3.5m x 5.4m	Sheet
TPS Polythene (Heavy Duty)	4m x 25m	Roll
Protec Pallet Wrap	400mm x 300m	Roll
Trapmat (30 sheets)	625mm x 1120mm	Sheet
Dust Sheets	12' x 9' or 3.66m x 2.7m	Sheet
Protective Overshoes (1000 Pairs)	N/A	Pack
Protective Overshoes (100 Pairs)	N/A	Pack
First Fix Plumbing Foam	300ml	Cartridge